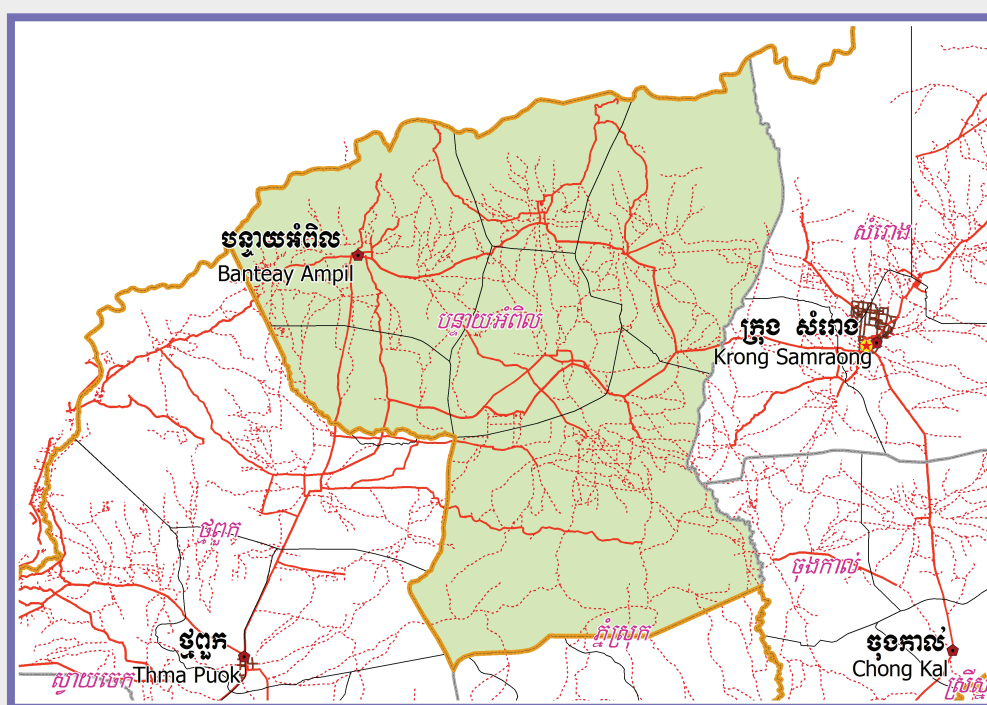


KINGDOM OF CAMBODIA
Nation Religion King



**National Committee for Sub-National
Democratic Development (NCDD)**



BANTEAY AMPIL DISTRICT DATA BOOK 2009

District Code Nr: 2202
Otdar Meanchey Province

October 2009

Banteay Ampil District Data Book 2009

District Code Nr: 2202

Otdar Meanchey Province

Table of Contents

List of Abbreviations	i
Glossary.....	ii
Preface	vi
Introduction	vii
SECTION A: GEOGRAPHY	1
1 Administration and Infrastructure.....	3
2 Land Use and Natural Resources.....	5
3 Geography	7
3.1 Land Area	7
3.2 Distances between Offices	7
SECTION B: DISTRICT PROFILE	9
1 General Information	11
1.1 Population of the District.....	11
1.2 Occupations	12
1.3 Property	14
2 Infrastructure and Economy.....	16
2.1 Roads in meters over 3 years.....	16
2.2 Sewerage Pipes in meters over 3 years.....	16
2.3 Drainage and Bridges	16
2.4 Services in the District	16
2.5 Agriculture.....	17
3 Social Aspects	28
3.1 Education	28
3.2 Health.....	34
3.3 Water and Sanitation	36
3.4 Vulnerable groups.....	40
3.5 Migration	42
4 Natural Resources and Environment (NRE).....	44
4.1 Families involved with NRE issues over 3 years	44
4.2 Percentage of Families involved with Natural Resource issues, by Commune, for 2008	44
4.3 Percentage Houses with access to Garbage collection and Families affected by environmental Pollution, by Commune, for 2008	44
4.4 Percentage Families using chemical Fertilizer and chemical Pesticides, by Commune, for 2008 ..	45
5 Administration and Security	46

5.1	Birth Registration across 3 years.....	46
5.2	Number of unregistered Infants born in 2008, by Commune	46
5.3	Registered criminal Cases over 3 years	46
5.4	Registered criminal Cases per 10,000 people, by Commune, for 2008.....	46
5.5	Number of registered Land Disputes, by Commune, in 2008	46
6	Gender	47
6.1	Registered Domestic Violence over 3 years.....	47
6.2	Percentage of registered cases of Families experiencing domestic Violence, by Commune, in 2008	47
6.3	Women's involvement over 3 years.....	47
6.4	Percentage of Female Participants in Civil Society and of 18-60 year women with uncertain Jobs, by Commune, in 2008	48
6.5	Female-headed Households over 3 years.....	48
6.6	Percentage female-headed Households and with Children of less than 5 years old, by Commune, in 2008	48
7	Indigenous People in the District	49
7.1	Ethnic Minorities in the District over 3 years.....	49
7.2	Other Minorities in the District over 3 years.....	49
	SECTION C: PLANS AND PROJECTS	51
8	Priorities and Plans	53
8.1	Priorities of Commune Councils for 2009 in the District by Sector	53
8.2	Temporary Agreements by Commune, for 2009	57
8.3	Outputs, estimated and actual costs of C/S Fund Projects between 2005 and 2008, by Commune	70
8.4	Total Expenditure on C/S Fund Projects by sector and commune between 2005 and 2008.....	71
8.5	Actual 2009 C/S Fund projects by Commune	71
9	District level Projects from 2006 to 2009	72
9.1	District Initiative Infrastructure Projects from 2006 to 2009	72
9.2	District Initiative Service Projects from 2006 to 2009	73
9.3	Inter Commune Council Projects in 2008 and 2009	73
9.4	Other Projects in 2008 and 2009	73
	SECTION D: SERVICES AND ORGANIZATIONS	77
10	Infrastructure.....	79
10.1	Length of and Expenditure on Roads in 2008, by District	79
10.2	Scale of and Expenditure on Irrigation in 2008, by District.....	79
10.3	Power Supply in 2008, by District	80
11	Health Facilities.....	81

11.1 Health Facilities in the Province, by Operational District.....	81
11.2 Health Facilities and Staff in the province, by Operational District.....	82
11.3 Deliveries in 2007 in the Province, by Operational District.....	82
12 Education	83
12.1 Schools, Classes, Students, Staff, for for all levels, for 2007/2008 by District.....	83
12.2 Characteristics of Schools and School Principals for 2007/2008 by Commune	83
12.3 Enrolment by Level of Education, 2006/2007 by Commune	84
12.4 Enrolment by Level of Education, 2007/2008 by Commune	84
12.5 Aspects of Enrolment for 2007/2008 by Commune.....	84
12.6 School Buildings for all schools in the District for 2007/2008, by Commune	85
12.7 Conditions of Classrooms and Existence of Separate School Office and Library, by Commune	85
12.8 Community Participation and Financing across all schools in the District for 2007/2008 by Commune	85
12.9 Percentage Student Flow Rates and Graduation by level 2006/2007, by Commune	86
13 Staff and Resources at the District	87
13.1 District Councilors elected in 2009	87
13.2 Committees of the Council.....	87
13.3 Board of Governors.....	87
13.4 Offices under Sala Krong, Sala Srok and Sala Khan	88
13.5 Municipality/District/Khan line offices.....	88
13.6 Properties and Equipment of District Administration	88
13.7 Registered Revenue of the District Administration in 2008	89
13.8 Services in the District	89
13.9 Civil Society Organizations active in the District.....	90
13.10 Private Sector Organizations.....	91
SECTION E: POVERTY DATA	93
14 Data on Poverty	95
14.1 Predicted Poverty Rates for 2009, by commune	95
14.2 Poverty data from survey.....	95

List of Abbreviations

#	Number
AGR	Agriculture
BR	Birth Registration
C. Pilot	Piloted Commune
C/S	Commune / Sangkat
CBO	Community-Based Organization
CDB	Commune Database
CDPD	Commune Development and Planning Database
CIP	Commune Investment plan
CLTS	Community Led-Total Sanitation
Comm.	Commune
Com Cov	Commune Covered
CPA	Complementary Package of Activities
CPS	Community Preschool
CCWC	Commune Committees for Women and Children
DANIDA	Danish International Development Agency
DDLG	Democratic Development and Local Governance Project (EC-UNDP)
DFID	Department For International Development (UK)
DIP	District Initiative Project
DIS	District Information System
District PDRD	District Office of Rural Development
District WP	District Work Plan
DIW	District Integration Workshop
DoLA	Department of Local Administration
Dr	Doctor
DWRM	District Office of Water Resource and Meterology
ECD	Early Childhood education (part of PE)
EMIS	Education Management Information System
Event IC	Celebration of International Days
FDH	Former District Hospital
GTZ	German Society for Technical Cooperation (Gesellschaft für Technische Zusammenarbeit GmbH)
Ha	Hectare
HC	Health Center
HC (NB)	Health Center (no building)
HH	Headed Household
HSI	Intervention for Health
HP	Health Post
HW	Hand Washing
ICC	Inter Commune Council
IFAD	International Fund for Agricultural Development
IND	Industry
Inter-commune	Inter-Commune Project Management Committee or Inter-commune project
IO	International Organization
LASED	Land Allocation for Socio-Economic Development
LGCR	Local Governance for Children's Rights
M&E	Monitoring and Evaluation
MA	Medical Assistant
MoEYS	Ministry of Education, Youth and Sports
MoH	Ministry of Health

MoP	Ministry of Planning
MPA	Minimum Package of Activities
MW1	Primary Midwives
MW2	Secondary Midwives
n/a	Not available
NCD	National Contracts Database
NCDD	National Committee for Sub-National Democratic Development
NGO	Non-Governmental Organization
NRML	Natural Resources Management and Livelihood
NU1	Primary Nurse
NU2	Secondary Nurse
OD	Operational District
ODF	Open Defecation Free
Ope. Costs	Operational Costs
Others	Other Staff
PBW	Public Works
PDoEYS	Provincial Department of Education, Youth and Sport
PDRD	Provincial Department of Rural Development
PDWRM	Provincial Department of Water Resource and Meteorology
PE	Parenting Education
PHAST	Participatory Hygiene and Sanitation Transformation
PHD	Provincial Health Department
PID	Project Information Database
PMC	Project Management Committee
Pop 04-05	Population Covered 2004 or 2005
PSDD	Project to Support Democratic Development through Decentralization and Deconcentration
RRD	Rural Road Development
RH	Referral Hospital
RILGP	Rural Investment and Local Governance Project
RPRP	Rural Poverty Reduction Program
RuLIP	Rural Livelihoods Improvement Program
SIDA	Swedish International Development Cooperation Agency
SPPA	Senior Provincial Program Advisor
TBA	Traditional Birth Attendant
UNDP	United Nations Development Project
UNICEF	United Nations Children's Fund
Vil	Village
Vil Cov	Village Covered
VIL-HC	Distance from Village to Health Center
WASH	Water, Sanitation and Hygiene
WRM	Water Resource and Meteorology

Glossary

C/S Fund: The Commune/Sangkat Fund is established and managed by the Government of Cambodia to provide financial support for development projects and administrative costs of Commune/Sangkat Councils. The amount is determined as a percentage of the National Budget (for 2009: 2.8% over the 2008 budget) and is expected to increase gradually over the years. The total 2009 budget under this fund is \$ 27,643,902 (of which \$ 19,272,170 is for Development Projects and \$ 8,371,731 for Administration). Under the Rural Investment and Local Governance Project the World Bank currently reimburses the costs of development projects if these meet the Bank's criteria.

CDB: the Commune Data Base is a national database, compiled by the Ministry of Planning, on the basis of detailed questionnaires, completed at village and commune level, which are then sent to the Departments of Planning for data entry. The most recent round of data collection took place at the end of 2008 (and is reflected in the District Data Books). Commune, District and Provincial Profiles can be generated from this database and should be available from provincial Departments of Planning.

CDPD: the Commune Development and Planning Database is a database maintained by Departments of Planning and Ministry of Planning, recording proposed activities as determined and prioritized by Commune and Sangkat Councils; the Temporary Agreements between these councils and supporting agencies, as decided at District Integration Workshops and details on projects that actually take place at commune, district and provincial levels.

CIP: The Commune Investment Plan is a rolling three-year plan, developed and decided by the Commune or Sangkat Council. It sets priorities and identifies the projects proposed for the years to come.

Commune and Sangkat (C/S): the Communes (in rural areas) and Sangkats (in urban areas) are the lowest and smallest units of local government. Councils are elected directly, once in five years, for the 1417 Communes and 204 Sangkats. In the C/S there are 14,119 villages, which have Village Chiefs, but don't constitute a formal level of local government.

DIP: the District Initiative Project is jointly supported by the MDLF (Multi-Donor Livelihood Facility (supporting the NRM&L Program)) and PSDD. In 2009 it covers 106 districts, 60% of the total in the country, with a budget of \$ 3.2 million. It is focused on capacity development in planning, democratic development, public competitive procurement, financial management and service delivery.

DIS: The District Information System is a national database maintained by NCDD, recording resources, staff, revenue, infrastructure and equipment available in the 193 Districts and Khans throughout the country. The last update took place in July 2009

District, Municipality and Khan constitutes the third level of Government in Cambodia. There are 159 rural Districts, 26 Municipalities and 8 Khans of Phnom Penh Capital. They all have Councils which were, for the first time, elected in May 2009, by the Commune/Sangkat Councilors. These councils have a mandate for 5 years.

DIW: District Integration Workshops are held between July and October, to bring Commune/Sangkat Councils, looking for support for their projects, together with the governmental and non-governmental agencies that may provide support.

ICC: Inter Communes Council projects are executed in 10 provinces under the Democratic and Decentralized Local Governance Project (DDLG). This five year project (2006-2010) is executed by Ministry of Interior and funded by the European Commission and UNDP. The project focuses on improving dialogue partnership and accountability; create a network of Commune Councils at the provincial and national level and support and contribute to local area development for poverty reduction. The work under the ICC component supports investments and services formulated through inter-commune dialogue and planning.

MEDiCAM: A non-profit and non-partisan membership organization for NGOs active in Cambodia's health sector. It is the primary networking agency for health-related NGOs

NCDD: the National Committee for sub-National Democratic Development is the inter-ministerial body charged with the implementation of the Organic Law (a key legislative document, adopted in 2008, outlining the envisaged decentralization). NCDD also channels substantial financial assistance by a number of Development Partners, to projects and programs at various levels. This amounted to over \$ 91 million in 2008. More information at: www.ncdd.gov.kh. This website also provides access to reports, manuals, legal documents, details on projects and more.

OD: the Operational Districts are the districts as defined and used by the Ministry of Health. These do not coincide with the 193 (Administrative) Districts and Khans, as used by all other RGC agencies. The Operational Districts are usually larger, and so there are 77 Operational Districts against 193 administrative Districts and Khans. However they do fit within the boundaries of administrative provinces.

PID: The Project Information Database is the database maintained by NCDD at national and sub national level, to follow all aspects of projects by Commune and Sangkat Councils, including the C/S Fund projects

Provincial Investment Fund (PIF)

The Provincial Investment Fund is allocated to all Provinces and Municipalities according to a population based formula. Part of the fund is earmarked for support to planning activities of the Provincial / Municipal Department of Planning; and to gender mainstreaming activities of the Provincial Department of Women's Affairs. The remaining "un-earmarked PIF" is allocated by PRDC to sectoral technical departments against established criteria and in response to proposals with prioritisation taking into account: priorities formulated by the CS Councils and aggregated by District into District Priority Activities Matrices (DPAM); alignment with national planning and poverty alleviation criteria, complementarity with other planned activities; and performance of the Department concerned in implementation of activities in previous years. With this provisional allocation, the Department then programs activities through the District Integration Process. Finally, the agreed activities, plus support costs amounting to no more than 25% of the total, are included in a sub-contract signed between PRDC and the Department, pursuant to the overall PSDD contract signed between NCDD and PRDC. Total budget has been around \$ 2 million per year.

Province: the 23 Provinces and Phnom Penh Capital City represent the 2nd layer of government. They vary in size, from very small, like Kep (approx. 36,000 people) and Pailin (approx. 70,000 people), or large but with small populations, like Mondulkiri (over 60,000 people), and Ratanakiri (over 153,000) to densely populated and large, like Kampong Cham (over 1.7 million people) and Kandal (approx. 1.4 Million people).

PSDD: the Project to Support Democratic Development through Decentralization and Deconcentration is funded by DFID (UK), SIDA (Sweden) and UNDP and runs from 2006 till the end of 2010 (including a one year extension). Annual budgets range from \$ 11 million to over \$ 18 million. The project provides core technical support to NCDD and to the provinces, financial support to the C/S Fund, District Initiative, Provincial Investment Fund and capacity building support through training, studies and advisory services.

RILGP: The Rural Investment and Local Governance Project is a World Bank funded project that provides substantial support to C/S Fund projects and to developing the required infrastructure, policies, systems and skills. It started in 2003 with a Loan for \$ 22 million for 2003-2007 and was then extended with a Grant of \$ 36 million for the period of 2007-2010. Discussions about a possible RILGP 2 are taking place between RGC and the World Bank.

RPRP: the Rural Poverty Reduction Project is a seven year project from 2004 till 2010, funded by IFAD and UNDP and implemented through the Ministry of Agriculture, Forestry and Fishery, supported by the Ministry of Interior and facilitated by NCDD. The project is active in the provinces Prey Veng and Svay Rieng and focuses on 120,600 households below poverty line. The objective is poverty reduction with the active participation of the poor through improved livelihoods, Strengthened capacity, Sustainable farming systems and natural resource management, new and/or rehabilitated infrastructure development, increase accessibly to technology, services and markets for their economic and social development.

RULIP: the Rural Livelihoods Improvement Project is implemented by the Ministry of Agriculture Forestry and Fisheries (MAFF)' Project Support Unit- PSU, with the NCDD playing the role of cooperating agency. Funded by IFAD and UNDP, the project will run till 2014. The target group consists of poor households who have little or even no land, few livestock or other assets and often many dependents. The main goal of the project is to directly or indirectly improve the livelihood systems, food security and incomes of a total of 33,900 rural poor, ethnic minority and female headed households in targeted village of Kratie, Preah Vihear and Ratanakiri provinces in a sustainable manner.

Seth Koma: The UNICEF funded Seth Koma program focuses on measurable action for children and women. During 2006 -2010 it is implemented in six provinces. Government and UNICEF pursue a set of inter-related goals, addressing critical stages of the life cycle of the child: a) Mothers have safe pregnancies and deliveries and healthy newborns; b) best possible start in life of infant; c) Children enter schools at the right age of six years; d) Children are protected from exploitation, abuse, violence, discrimination and other risks; and e) Youth and adolescents acquire life skills, express their views, participate in the decisions.

Preface

The Government of Cambodia attaches great importance to optimal use of scarce resources and to participatory planning and management at all levels. The Organic Law which was adopted in 2008 provides the legal context for further steps towards improving and decentralizing planning, management and monitoring, and towards greater accountability and transparency of institutions at sub-national levels.

The Government has established elected Councils at the sub-national levels, and we will progressively give them the responsibilities, together with the human and financial resources, to deliver a wide range of public services. They will be more democratic, more efficient, more transparent and accountable, better at addressing gender and other inequalities, and at fighting corruption. We recognize that development does not come from government alone; it needs the involvement of citizens, civil society and the private sector, and the new system will facilitate this.

A central element in this process is the availability of information on any aspect of development to all concerned parties. The newly elected Councillors at District and Khan level, line departments operating at these levels, but also NGOs, Development Partners, Commune Councillors and citizens throughout Cambodia need information on problems and requirements, resources and opportunities, services and agencies, plans and projects. They will need such information to better understand the present situation, set targets for the future, monitor progress, know what others are doing and to apply resources wisely and this is the reason the District Data books will be so valuable.

The District Data Books are a major step towards full transparency and towards informed planning and decision-making. They provide all available data at District, Khan, Commune and Sangkat level in easily accessible formats, in Khmer and English, through over 16,000 printed copies, CD-ROMs and the NCDD website.

This is the first time in Cambodia (and possibly in South East Asia) that such detailed information is made so widely available and NCDD should be commended for the hard work that has gone into this. We also thank the Ministry of Planning, which provided the detailed data of the Commune Data Base, the sectoral ministries and provincial authorities who contributed data and the Development Partners who provided financial support.

It is our sincere hope that the publication of the District Data Books will strengthen capacities, especially at district levels, for evidence-based development planning. We also hope that this information will deepen the understanding among Ministries, Provincial Authorities, Development Partners, NGOs and research agencies of the realities at commune and district levels.

We call upon all to use and distribute this information, complement or correct where appropriate and to contribute new data in the years to come.

Sar KHENG

Deputy Prime Minister, Minister of Interior and Chairman of NCDD

Introduction

Purpose

The purpose of the District Data Books is to bring together information on any aspect of life and development of Districts, Khans, Communes and Sangkat, together and make this widely available. The primary targets are the newly elected District Councilors, district level line departments, provincial agencies, Development Partners and NGOs operating at this level. They need detailed knowledge on current living conditions, natural resources, infrastructure, agriculture and other economic activities, current service levels, past and planned projects and available resources.

While much information exists on many of the above aspects, it is often hard to access that information and much is lost to reports, databases and statistics that are not widely shared. Data are often only available in one language and often out-of-date, and many reports cover only one sector or region.

We found that these problems are especially acute at the district level. Now that Districts are becoming a much more significant level of local government and development planning, there is an urgent need for wide-ranging data to be used for setting base-lines, planning and prioritizing, monitoring and learning.

Approach

We have attempted to identify and compile all available statistics, reports, maps and other data at district and/or commune level. From this we have selected information that is available for all or most districts, reasonably reliable and up-to-date, sufficiently detailed and of possible interest to development planners, decision makers, agencies and citizens.

The major sources of the information in these District Data Books are:

- a) The Commune Data Base information over the years 2006 to 2009 (the most recent data were collected late last 2008), as compiled by the Ministry of Planning
- b) Detailed information directly collected from the Ministry of Health, the Ministry of Education, Youth and Sports and (for maps) the Ministry of Land Management, Urban Planning and Construction
- c) The Project Information Database (PID) at NCDD (up-to-date)
- d) The Commune Development and Planning Database (CDPD) (up to date)
- e) The District Information System (DIS) (updated per Mid 2009)
- f) Direct data collection at provincial and district level on private sector, irrigation, roads, and electricity, through provincial agencies
- g) Medical data collected from MEDiCAM
- h) The ID Poor Project – for poverty data on a number of provinces and districts
- i) NCDD's work on predictive poverty rates
- j) Specific projects for outputs, plans and budgets (Seth Koma, RILGP, RPRP and ICC)

Limitations of the data

We are fully aware that the data we collected are not always complete, consistent or correct. While we have rejected information that was wrong or very incomplete, we decided not to aim for statistical and scientific perfection, but to include information that is useful, relevant

and comprehensive. We also accepted different sources for the same data as this may encourage discussion on the quality of the respective data.

We strongly encourage anyone who notes errors or incompleteness in these data to contact us and to share their data. We hope that the next round of producing such District Data Books can draw on wider sources and more complete data.

We encourage the District Administrations, who receive these data also in digital format, not only to use these for their planning and monitoring, but also to start correcting and updating these data and to share new data with NCDD for future use.

Contents

The information in the following pages is organized in five sections:

- a) **Geographical data:** this section provides maps on infrastructure and administration and on land use and natural resources management. These maps are also provided in large format to all Districts and Khans.
- b) **District Profile:** this presents wide ranging data, covering 2006 – 2009, at district and commune level, extracted from the Commune Data Base, but edited for better understanding.
- c) **Plans and Projects:** this section presents development priorities determined by Commune and Sangkat Councils, Temporary Agreements, outputs and expenditure of major projects at Commune and District level over 2006 – 2008 and plans and budgets for 2009.
- d) **Services and Organizations:** this section provides details on key infrastructure (roads, electricity, irrigation systems) and services in health and education at district and commune level. It also provides an inventory of resources at the District Administration, NGOs operating in the district and private sector agencies active in the district.
- e) **Poverty Data:** this section provides predicted poverty rates for 2009 for all districts and communes and detailed poverty data compiled and processed by the ID Poor project for those that have been covered by this project.

The future

It is our hope that this is the start of a longer-term process. We hope that a next edition of these District Data Books will offer more comprehensive, correct and up-to-date information. We hope that the District Administrations will not only start using this information, but also improve and update it. For this they are all provided with the full data set in digital format.

We invite agencies, projects and experts to send reports, statistics and maps that could be used for a next version to us and we invite all users of the District Data Books to inform us about errors, updates and inconsistencies. Please contact us through info@ncdd.gov.kh

We now invite you to browse through this data book. You may open this randomly or use the table of contents and go to the aspects that have your special interest.

We hope that you will be informed, surprised and assisted. We hope, above all, that this information will lead to a deeper understanding of causes and effects of poverty, to purposeful decisions on how to tackle those causes and to greater transparency in using scarce resources for the benefit of all.

Martin de Graaf
Program Advisor, PSDD/NCD

SECTION A: GEOGRAPHY

1 Administration and Infrastructure

Please see separate folder containing A3 maps.

2 Land Use and Natural Resources

Please see separate folder containing A3 maps

3 Geography

3.1 Land Area

Total Land Area (ha)	Forest Land Area (ha)		Cultivation Land Area (ha)	Construction Land Area (ha)	Other Land Area (ha)
	Total	Flooded Forest Area			
134210	83031	0	37367	3860	9952

3.2 Distances between Offices

Location	Distance (Km)
From District Office to C/S Office of Ampil	24
From District Office to C/S Office of Beng	11
From District Office to C/S Office of Kouk Khpos	23
From District Office to C/S Office of Kouk Mon	0

SECTION B: DISTRICT PROFILE¹

¹ All data in this section come from the Commune Database (CDB) unless otherwise specified. These include primarily new CDB data, collected late 2008, and some data from earlier years. Please note that percentages are rounded to the nearest whole number.

1 General Information

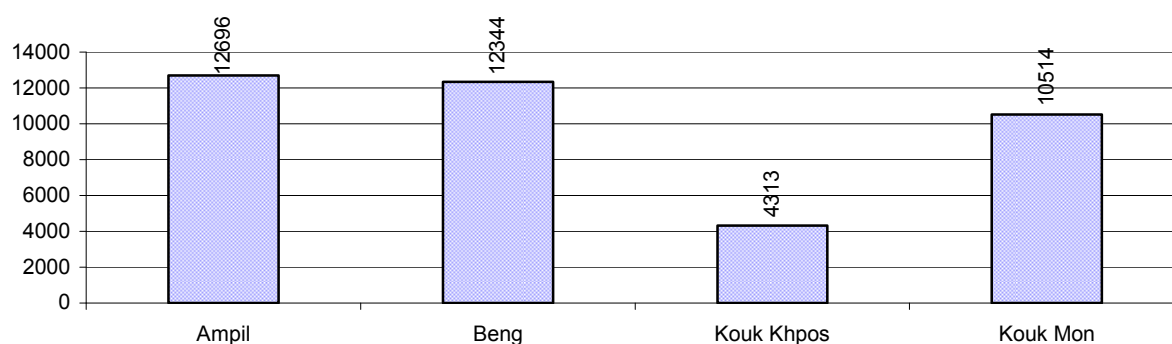
1.1 Population of the District

1.1.1 Total Population

Number of families	2005	2006	2007	2008
Total number of families	7,847 families	8,195 families	8,434 families	8,856 families
Increase (+)/Decrease (-) in nr of families		4%	3%	5%
Total population	38,221 pers	40,628 pers	39,969 pers	39,867 pers
Increase (+)/Decrease (-) in nr of people		6%	-2%	0%
Number of female Headed Households (HH)	984 families	1,466 families	981 families	1,027 families

Note: Percentages of population and increase/decrease are calculated on basis of the previous year. A negative sign in front of the percentage indicates a decrease in population.

1.1.2 Population, by Commune, in 2008



1.1.3 Population, by Age Group, over 3 years

Population by age group	2006	2007	2008	
	%	%	%	Number
Age 0-5 years (as percentage of the population)	14%	12%	12%	4,949 persons
Male 0-5 yrs	52%	54%	53%	2,611 persons
Female 0-5 yrs	48%	46%	47%	2,338 persons
Age 6-17 (as percentage of the population)	34%	33%	32%	12,691 persons
Male 6-17 yrs	52%	53%	51%	6,488 persons
Female 6-17 yrs	48%	47%	49%	6,203 persons
Age 18-60 (as percentage of the population)	49%	52%	52%	20,855 persons
Male 18-60 yrs	50%	50%	50%	10,338 persons
Female 18-60 yrs	50%	50%	50%	10,517 persons
Age 61 above (as percentage of the population)	3%	3%	3%	1,372 persons
Male 61	44%	46%	44%	605 persons
Female 61	56%	54%	56%	767 persons

Note: The overall percentage for each age group is calculated on the basis of the total population. The gender distribution of each group is calculated on the basis of the population within that particular age group.

1.2 Occupations

1.2.1 Percentage of families with a particular Occupation over 3 years

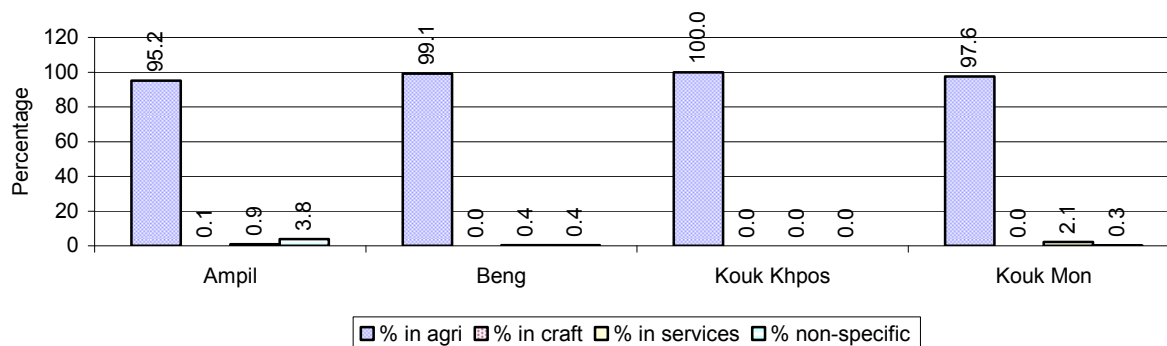
This table shows the percentage of the population who have a particular occupation (job), for example the percentage of the population in the district who are rice farmers, furniture crafter, trader, etc.

Description	2006	2007	2008	
	%	%	%	Number
Families whose main occupation is agriculture	97%	95%	98%	8,635 Families
Families whose primary occupation is rice farming	96%	94%	96%	8,473 Families
Families whose primary occupation is cultivating long-term crops	0%	0%	0%	6 Families
Families whose primary occupation is cultivating short-term crops	1%	0%	0%	18 Families
Families whose primary occupation is cultivating vegetable	0%	0%	0%	5 Families
Families whose primary occupation is fisherman	0%	0%	0%	0 Families
Families whose primary occupation is livestock farmer	0%	0%	0%	5 Families
Families whose primary occupation is NTFP collection	0%	0%	1%	128 Families
Families whose main occupation is craft work	0%	0%	0%	3 Families
Families, whose main occupation is in furniture craft, wooden, rattan, vine, bamboo	0%	0%	0%	3 Families
Families whose main occupation is in metal, aluminum, glass goods production	0%	0%	0%	0 Families
Families whose main occupation is food production	0%	0%	0%	0 Families
Families whose main occupation is tire, plastics and rubber goods production	0%	0%	0%	0 Families
Families whose main occupation is textile, clothing goods production	0%	0%	0%	0 Families
Families whose main occupation is in other production, not listed above	0%	0%	0%	0 Families
Families whose main occupation is services	1%	1%	1%	87 Families
Families whose main occupation is trade	0%	0%	1%	46 Families
Families whose main occupation is repair	0%	0%	0%	17 Families
Families whose main occupation is providing transport services	0%	0%	0%	2 Families
Families whose main occupation is providing other services	0%	0%	0%	22 Families
Families whose main occupation is not clear (or multi)	3%	5%	1%	131 Families

Note: The occupation percentages are calculated on the basis of the total number of families.

1.2.2 Percentage Families that work in one of four occupational sectors, by Commune in 2008

This table indicates the percentage of families involved in one of four occupation types: agriculture, craft, services or non-specific (other). Please note agriculture includes forestry activities such as cutting down trees and gathering gum from the trees.



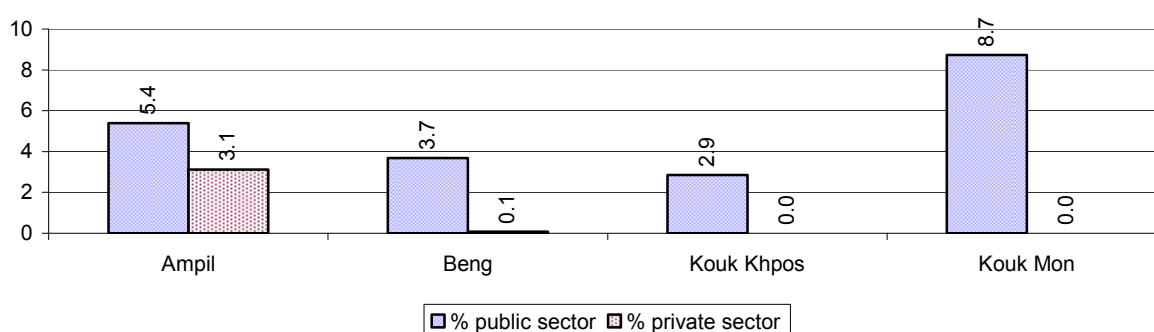
Note: Calculated on the basis of the total number of families within a commune.

1.2.3 Percentage of Families with public Sector, private Sector or uncertain Jobs, over 3 years

Description	2006	2007	2008	
	%	%	%	Number
Families that have a family member who is a government official, staff or worker	5%	5%	5%	482 families
Families that have a family member who is a private sector staff or worker	1%	0%	1%	94 families
Number of people aged 18-60 with uncertain/irregular jobs	13%	7%	13%	2,623 persons

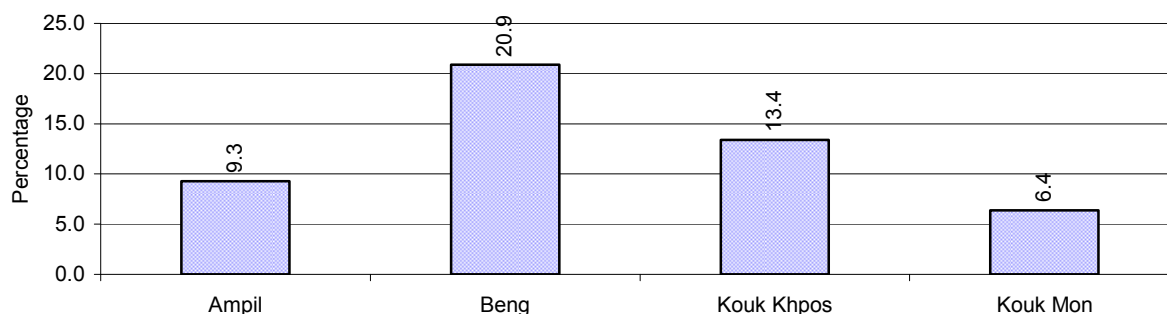
Note: In the first two rows percentages are calculated on the basis of the total number of families. In the third row the percentage is calculated on the basis of the total number of people aged 18-60 years.

1.2.4 Percentage of Families with public or private Sector Jobs, by Commune in 2008



Note: Calculated on the basis of the total number of families in the commune

1.2.5 Percentage of People aged 18-60 years with uncertain/irregular Jobs, by Commune, in 2008.



1.3 Property

1.3.1 Housing types and facilities over 3 years

This table shows the percentage of people living in a certain type of house. It also indicates how many houses have electricity or battery powered lights and how many have TV.

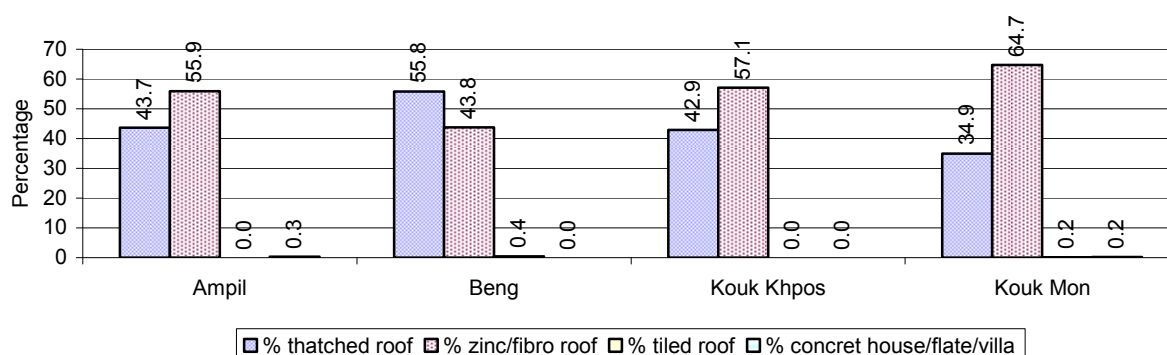
House Type	2006	2007	2008	
	%	%	%	Number
House with thatched roof	45 %	47 %	45 %	3,577 houses
House with zinc/fibro roof	54 %	53 %	54 %	4,316 houses
House with tiled roof	0 %	0 %	0 %	15 houses
Flats/apartments (with many families living)	1 %	0 %	0 %	7 houses
Concrete house or flat (with one family living)	0 %	0 %	0 %	5 houses
Villa house	0 %	0 %	0 %	2 houses
Houses with electricity	3 %	4 %	1 %	66 houses
Houses with battery light	32 %	38 %	41 %	3,266 houses
Houses with TV	19 %	21 %	20 %	1,568 houses

Note: Calculated against the total number of houses

1.3.2 Families living on public Land or without a permanent House

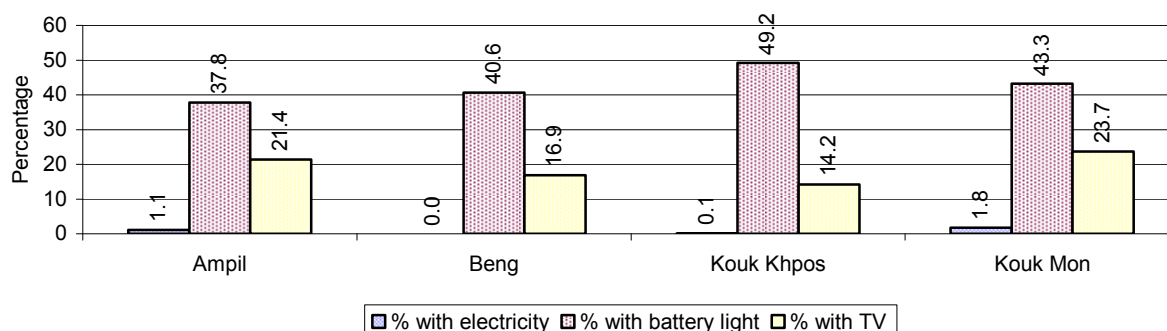
Living situation	2006	2007	2008
Families living in a house on public land	83 families	345 families	193 families
People, without permanent housing	19 person(s)	23 person(s)	17 person(s)

1.3.3 Percentage of Population living in a particular type of House, by Commune, in 2008



Note: Calculated against the total number of houses in each commune

1.3.4 Percentage of Houses with Electricity, Battery Lights and/or TVs, by Commune, in 2008



Note: Calculated against the total number of houses in each commune

1.3.5 Types of Vehicles and their ratio to Families across 3 years

This table shows the number of families per vehicle in the district. The last column shows the total number of each type of vehicle in the district for 2008.

Description	2006 ratio	2007 ratio	2008	
			Ratio	Number
Bicycle and bicycle with trailer	2	2	3	3,450
Ox-carts and horse-carts	3	4	5	1,667
Motorbike/with trailer	5	5	4	2,069
Motor tri-cycle	8,195	8,434	4,428	2
Large Transportation				
Total number of cars/trucks	216	107	90	98
Locally made vehicles	4,098	1,406	633	14
Trucks for goods transport	546	222	295	30
Buses/mini buses for passengers	8,195	N/A	N/A	0
Family cars	410	241	164	54
Agriculture machinery				
Tractors used for plowing	4,098	4,217	738	12
Power-tillage used for plowing	5	4	4	2,478
Other type of machinery				
Other type of machinery	1,639	8,434	2,952	3
Water transportation				
Row boats	N/A	1,054	1,771	5
Total number of motor boats	N/A	N/A	N/A	0
Motor boats used for fishing	N/A	N/A	N/A	0
Motor boats used for passengers	N/A	N/A	N/A	0
Motor boats used for goods transporting	N/A	N/A	N/A	0

Note: Ratio of families to a particular type of vehicle is the result of the total number of families divided by total number of that type of vehicle. Other types of vehicles, such as bulldozer, excavator, rollers etc. are not listed.

2 Infrastructure and Economy

2.1 Roads in meters over 3 years

Description	2006	2007	2008
Bituminous road	1,200 m	1,200 m	0 m
DBST, Macadam road	0 m	0 m	12,000 m
Concrete road	0 m	0 m	0 m
Laterite road	25,614 m	46,624 m	52,801 m
Constructed earth road	11,000 m	4,500 m	9,288 m
Un-constructed earth road	44,500 m	19,500 m	15,000 m

2.2 Sewerage Pipes in meters over 3 years

Description	Sewage pipe length		
	2006	2007	2008
Total length of sewage pipe, diameter 30-50 cm	5 m	0 m	0 m
Length of newly constructed sewage pipe, diameter 30-50 cm	5 m	0 m	0 m
Length of sewage pipe, diameter 30-50 cm needs repair/rehabilitation	5 m	0 m	0 m
Total length of sewage pipe, diameter of pipe 60-100 cm	173 m	168 m	3 m
Length of newly constructed sewage pipe, diameter 60-100 cm	37 m	18 m	0 m
Length of sewage pipe, diameter 60-100 cm needs repair/rehabilitation	35 m	30 m	0 m
Sewage pipe, diameter of pipe over 100 cm	0 m	0 m	0 m
Length of newly constructed sewage pipe, diameter over 100 cm	0 m	0 m	0 m
Length of sewage pipe, diameter over 100 cm needs repair/rehabilitation	0 m	0 m	0 m

2.3 Drainage and Bridges

Construction Type	2006		2007		2008	
	place(s)	Length	place(s)	Length	place(s)	Length
Single pipe culvert	45	273m	28	96 m	32	245 m
Double-pipe culvert	14	82m	36	36 m	33	261 m
Box pipe culvert	8	38m	2	12m	5	37 m
Wooden bridge	5	110m	6	30m	6	130 m
Concrete bridge	7	199m	13	100m	5	90 m
Bale bridge	0	0m	0	0m	0	0 m
Spillway construction	3	55m	5	0m	3	30 m

2.4 Services in the District

Descriptions	Number of places by year		
	2006	2007	2008
Public			
Electricity generating stations	1	1	1
Health clinics	0	0	1
Private			
Bicycle and motorcycle repair places	18	19	569
Agricultural machinery, tools and equipment repair places	3	3	7
Electronic tool repair places	1	1	4
Battery-charging services	60	64	58
Handicraft places, wooden furniture and forest by-products	0	0	4
Other handicraft places (excluding furniture)	0	0	0
Small-scale services (hairstylist, phone service, massage,	10	10	15

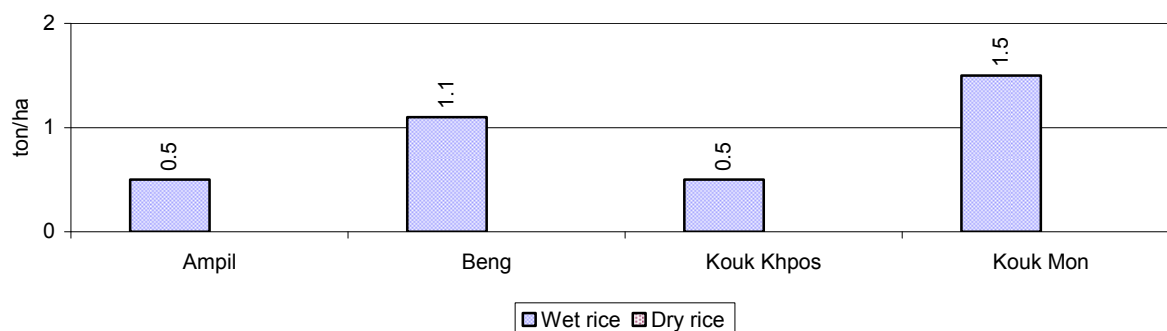
Descriptions	Number of places by year		
	2006	2007	2008
Karaoke, etc)			
Small-scale food shop businesses (Food, groceries, drink shop, etc)	2	7	28
Small-scale rice mills	73	62	71
Medium or large-scale rice mills	43	39	70
Small-scale markets	2	0	2
Large-scale market	0	0	0
Alcohol refinery places	0	0	0
Pharmacies and small drug stores	0	1	2
Hotels	0	0	0
Guest houses	0	0	0
Restaurants	0	0	0
Gasoline stations	0	0	0

2.5 Agriculture

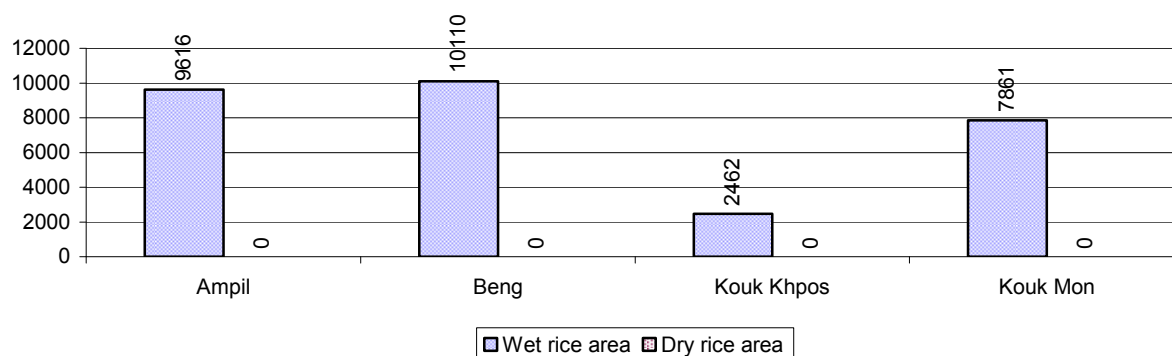
2.5.1 Rice cultivation in the District over 3 years

Description	2006	2007	2008
Total dry rice land area	0 ha	0 ha	0 ha
Actual dry rice cultivation area	0 ha	0 ha	0 ha
% actual cultivation to total land	-%	-%	-%
Total dry rice production	- tonne(s)	- tonne(s)	- tonne(s)
Average dry rice yield	- tonne(s)/ha	- tonne(s)/ha	- tonne(s)/ha
Total wet rice land area	285,141 ha	14,742 ha	56,625 ha
Actual wet rice cultivation area	40,202 ha	14,554 ha	30,049 ha
% actual cultivation to total land	14 %	99%	53%
Total wet rice production	50,252.50 tonne(s)	13,583.73 tonne(s)	27,044.10 tonne(s)
Average wet rice yield	1.3 tonne(s)/ha	0.9 tonne(s)/ha	0.9 tonne(s)/ha
Total intensive rice land area	0 ha	0 ha	0 ha
Actual intensive rice cultivation area	- ha	- ha	- ha
Average intensive rice yield	- tonne(s)/ha	- tonne(s)/ha	- tonne(s)/ha
Actual upland rice cultivation area	320 ha	290 ha	87 ha
Total upland rice production	405 tonne(s)	290 tonne(s)	148 tonne(s)
Average upland rice yield	1.3 tonne(s)/ha	1.0 tonne(s)/ha	1.7 tonne(s)/ha

2.5.2 Estimated wet and dry Season Rice Yield in tonne(s)/Ha, by Commune, in 2008



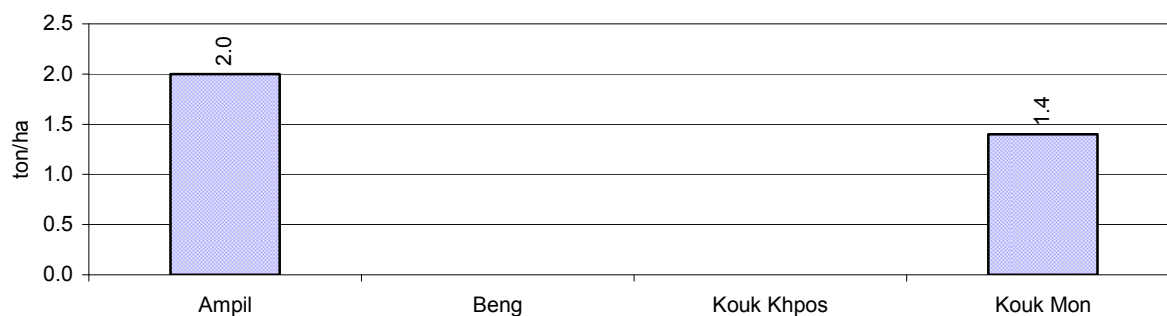
2.5.3 Cultivated wet and dry Season Rice areas in Ha, by Commune, in 2008



2.5.4 Estimated intensive Rice Yields in tonnes/Ha, by Commune, for 2008

There were no estimated intensive rice yields in this District in 2008

2.5.5 Estimated upland Rice Yield in tonnes/Ha, by Commune, for 2008

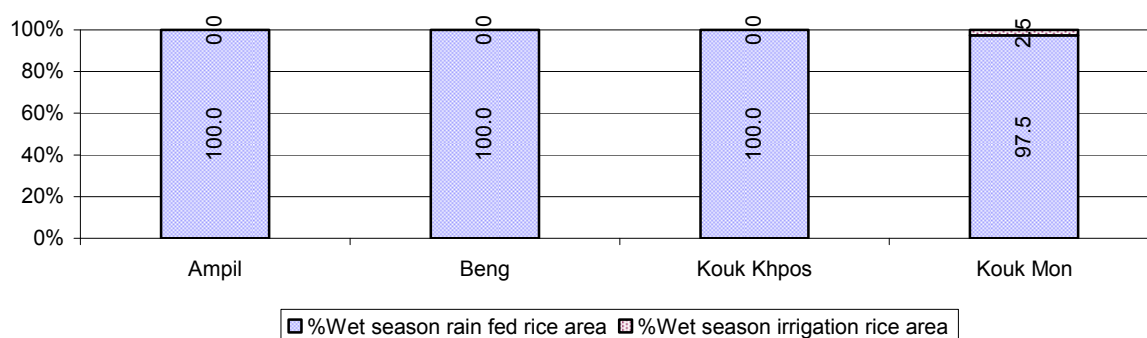


2.5.6 Wet season Rice irrigation across 3 years

Description		2006	2007	2008	
		%	%	%	Number
Total area of wet season rain fed rice land		100%	98%	99 %	29,849 ha
Percentage of wet season rice land that is irrigated; and for 2008 area in Ha		0 %	2 %	1 %	200 ha
Where	Area irrigated from canal/dam	- %	100 %	100 %	200 ha
	Area irrigated from river, stream, lake, natural pond	- %	0 %	0 %	0 ha
	Area irrigated from drilled well	- %	0 %	0 %	0 ha
	Area irrigated from dug pond	- %	0 %	0 %	0 ha

2.5.7 Water sources for wet Season Rice Cultivation, by Commune, in 2008

This chart shows the percentage of wet season rice cultivation receiving water from rain (natural) and from irrigation.



2.5.8 Access to Irrigation

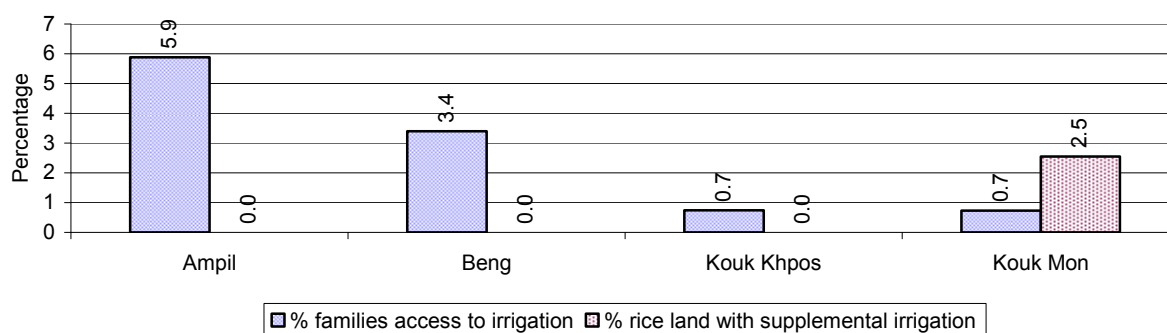
Description	2006 %	2007 %	2008	
			%	Number
Families who have access to irrigation water	6%	7%	3%	277 families
Families who have irrigation wells	0%	0%	0%	27 families

Note: Calculated against the total number of families are rice farmers

2.5.9 Number of Irrigation Wells over 3 years

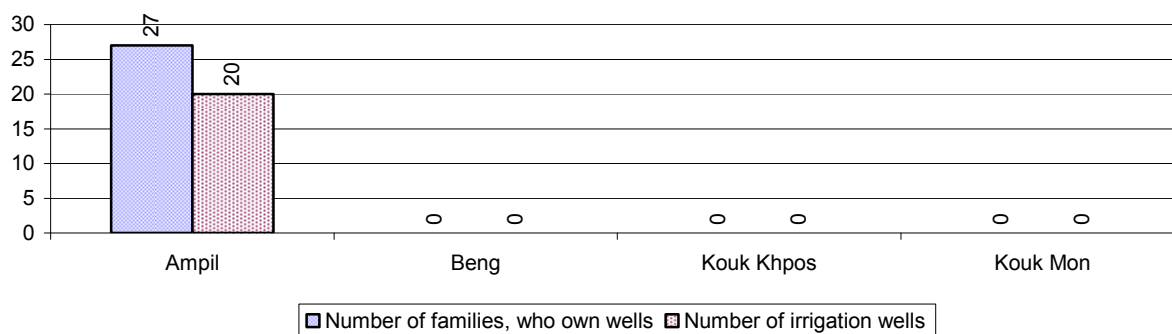
Description	2006	2007	2008
Number of irrigation wells	26 wells	23 wells	20 wells

2.5.10 Percentage of Families with access to (supplemental) Irrigation for wet Season Rice cultivation, by Commune, in 2008



Note: % of families, with access to irrigation is calculated against the total number of families, whose main occupation is rice farming. Irrigated wet rice land area is calculated against the total actual wet rice land cultivated areas

2.5.11 Irrigation Wells, by Commune, in 2008

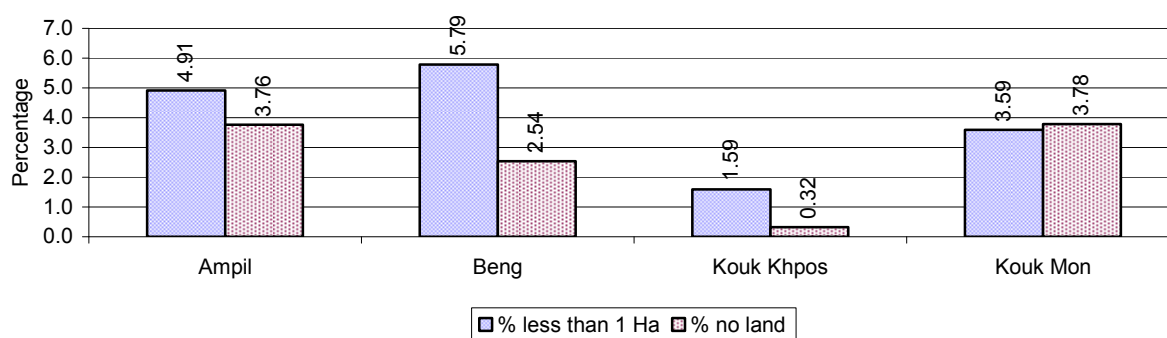


2.5.12 Farmers owning less than one hectare of Rice Land

Description	2006 %	2007 %	2008	
			%	Number
Families who have less than one hectare of rice land	5%	6%	4%	381 families
Families who do not own any rice land	4%	4%	3%	254 families

Note: Calculated on basis of total number of families who are rice farming

2.5.13 Percentage of Farmers with less than one Hectare or no Rice Land, by Commune, in 2008

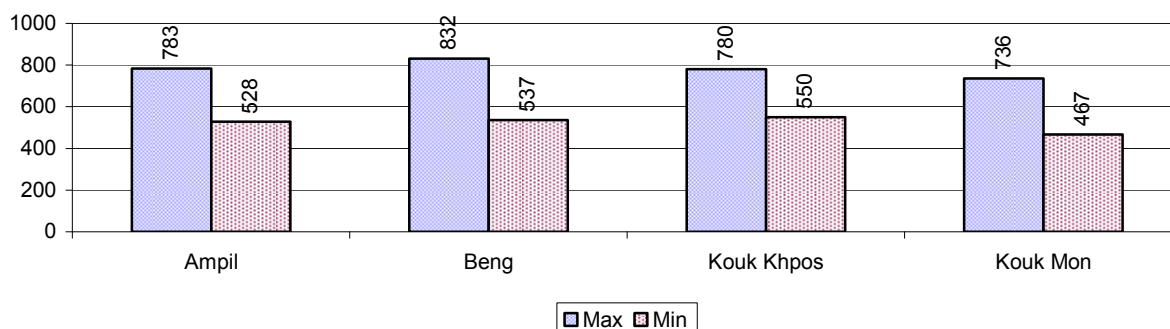


Note: Calculated on basis of total number of families who are rice farming

2.5.14 Average farm-gate Prices of Rice, over 3 years

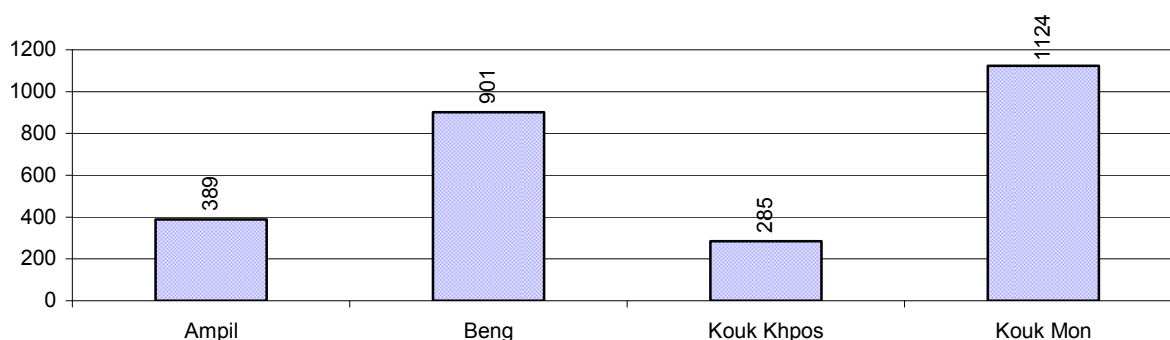
Description	2006	2007	2008
Maximum average farm gate price	463 Riels/Kg	562 Riels/Kg	783 Riels/Kg
Minimum average farm gate price	337 Riels/Kg	399 Riels/Kg	520 Riels/Kg
Average farm gate price	400 Riels/Kg	480 Riels/Kg	652 Riels/Kg
Average rice production per person	1,247 Kg/person	347 Kg/person	682 Kg/person

2.5.15 Minimum and maximum farm-gate Prices of Rice in Riel/kg, by Commune, in 2008



2.5.16 Production of Paddy in Kgs/Person, by Commune, in 2008

This table shows how much paddy (harvested rice) is produced in a year in a commune, in kgs per person.



2.5.17 Production of other Crops, over 3 years

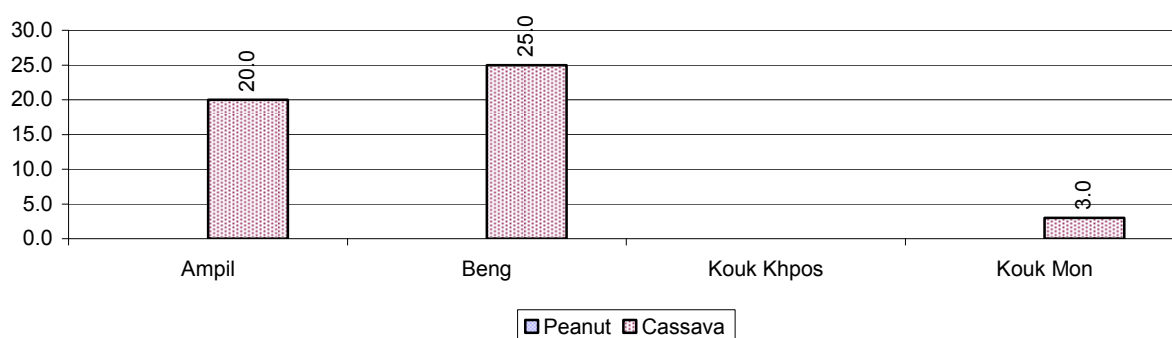
Crops	2006	2007	2008
Corn cultivation area	0 ha	0 ha	0 ha
Estimated corn yield	- tonne(s)/ha	- tonne(s)/ha	- tonne(s)/ha
Estimated corn production	- tonne(s)	- tonne(s)	- tonne(s)
Soya bean cultivation area	0 ha	0 ha	0 ha
Estimated Soya bean yield	- tonne(s)/ha	- tonne(s)/ha	- tonne(s)/ha
Estimated Soya bean production	- tonne(s)	- tonne(s)	- tonne(s)
Mungbean cultivation area	2 ha	0 ha	0 ha
Estimated Mungbean yield	0.5 tonne(s)/ha	- tonne(s)/ha	- tonne(s)/ha
Estimated Mungbean production	1 tonne(s)	- tonne(s)	- tonne(s)
Peanut cultivation area	0 ha	0 ha	0 ha
Estimated Peanut yield	- tonne(s)/ha	- tonne(s)/ha	- tonne(s)/ha
Estimated Peanut production	- tonne(s)	- tonne(s)	- tonne(s)
Cassava cultivation area	4 ha	0 ha	185 ha
Estimated Cassava yield	2.0 tonne(s)/ha	- tonne(s)/ha	16.0 tonne(s)/ha
Estimated Cassava production	8 tonne(s)	- tonne(s)	2,960 tonne(s)
Sweet potatoes cultivation area	0 ha	0 ha	0 ha
Estimated Sweet potatoes yield	- tonne(s)/ha	- tonne(s)/ha	- tonne(s)/ha
Estimated Sweet potatoes	- tonne(s)	- tonne(s)	- tonne(s)

Crops	2006	2007	2008
production			
Sesame cultivation area	0 ha	0 ha	0 ha
Estimated Sesame yield	- tonne(s)/ha	- tonne(s)/ha	- tonne(s)/ha
Estimated Sesame production	- tonne(s)	- tonne(s)	- tonne(s)

2.5.18 Yields of Corn, Soya beans and Mungbeans in tonne(s)/ha, by Commune, in 2008

There were no yields for any of these crops in this District in 2008

2.5.19 Yields of Peanuts and Cassava in tonne(s)/ha by Commune, in 2008



2.5.20 Yields of Sweet Potatoes and Sesame in tonne(s)/ha, by Commune, in 2008

There were no yields for any of these crops in this District in 2008

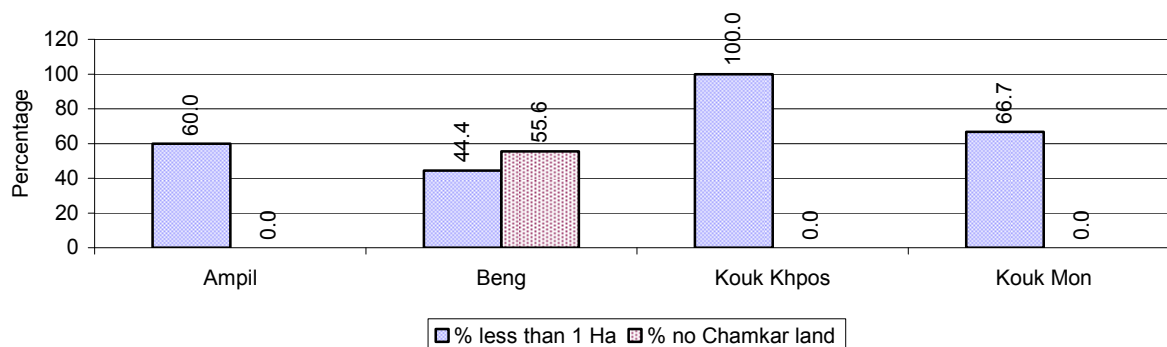
2.5.21 Percentage Farmers who own less than 1 Ha or no Chamkar land

Description	2006 %	2007 %	2008	
			%	Number
Families, who own less than 1ha of Chamkar land	21%	0%	59%	17 families
Families, with no Chamkar land	15%	0%	17%	5 families

Note 1: Calculated as a percentage of the total number of families whose main occupation is Chamkar (not rice) farming

Note 2: Chamkar land is no-rice land, i.e. other crops

2.5.22 Percentage Farmers owning less than 1 ha or no Chamkar land, by Commune, in 2008



Note: Percentage is calculated among families, who Chamkar farm as a main occupation, not the total population of the commune.

2.5.23 Percentage of Families raising Cattle/Buffalo, over 3 years

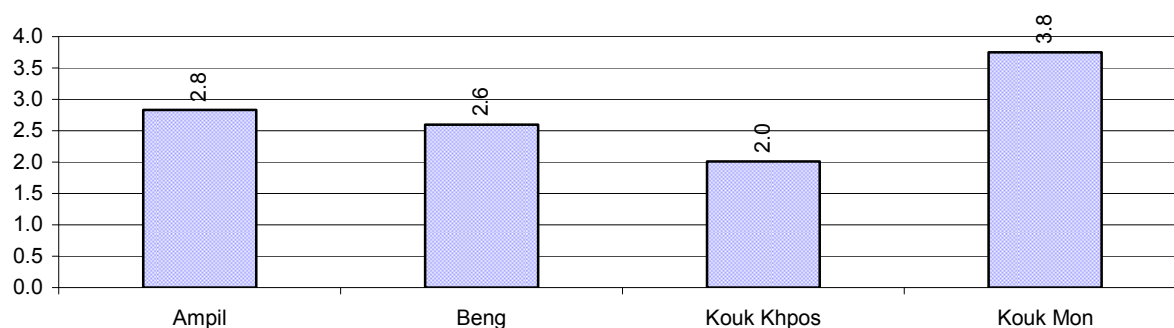
Description	2006 %	2007 %	2008	
			%	Number
Families raising cattle/buffalo	60%	51%	42%	3,699 families
Families raising cattle/buffalo as labor forces	42%	37%	24%	2,093 families

Note: Calculated against the total number of families.

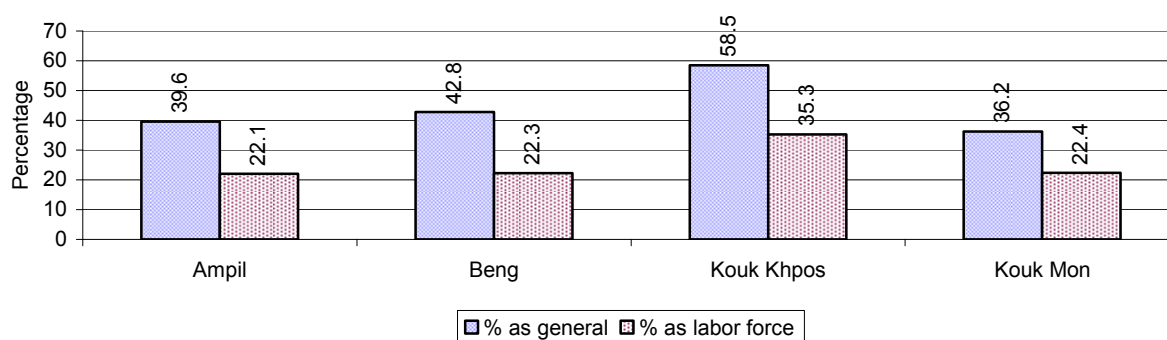
2.5.24 Number of Cattle/buffalo being raised, over 3 years

Description	2006	2007	2008
Total number of cattle/buffalo	13,581 head(s)	12,387 head(s)	10,493 head(s)
Average cattle/buffalo per families	2.7 head(s)/families	2.9 head(s)/families	3 head(s)/families

Note: Calculated by dividing total number of cattle/buffalo by total number of cattle/buffalo raising families

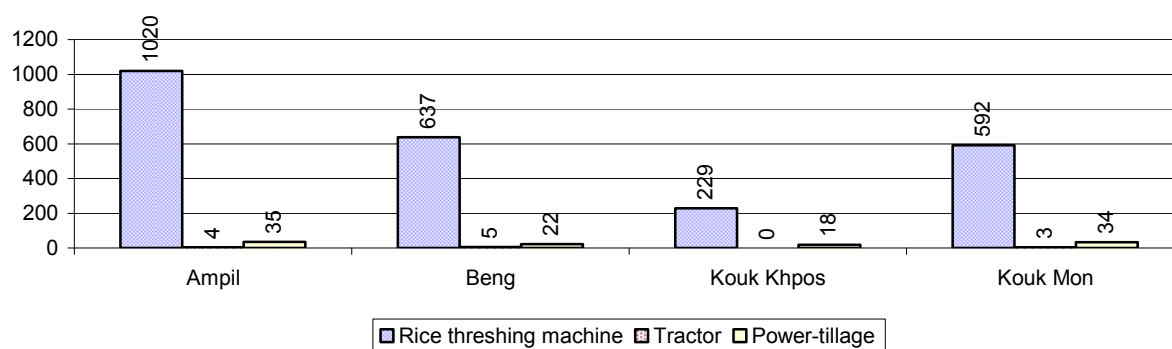
2.5.25 Average number of Cattle/Buffalo per Family, by Commune, in 2008

Note: Calculated by dividing total number of cattle/buffalo by total number of cattle/buffalo raising families

2.5.26 Percentage Families raising Cattle/Buffalo, for general and labor purposes in 2008, by Commune

Note: Calculated using the total number of families raising cattle/buffalo against the total number of families.

2.5.27 Type and number of agricultural Machines, by Commune, in 2008

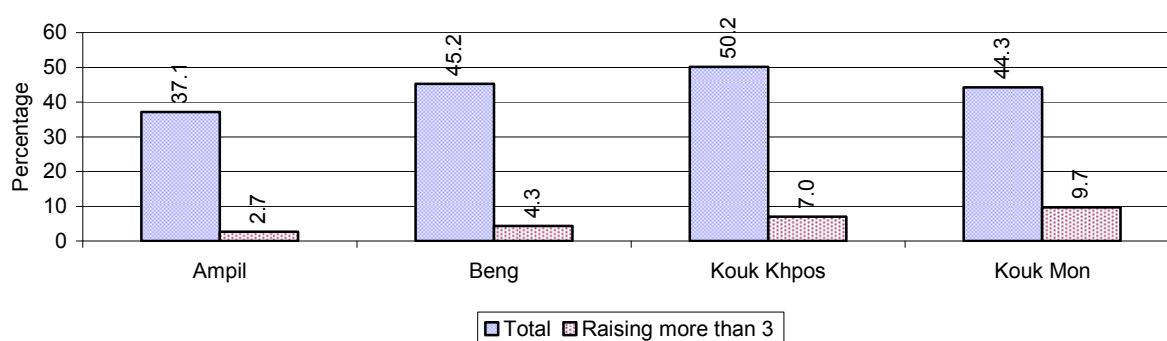


2.5.28 Livestock-producing Households over 3 years

Description	2006	2007	2008	
	%	%	%	Number
Total number of families raising pigs	56%	46%	43%	3,792 families
number of families raising more than 3 pigs	9%	5%	5%	479 families
Total number of families raising chickens	79%	82%	83%	7,394 families
number of families raising more than 3 chickens	60%	62%	67%	5,967 families
Total number of families raising ducks	23%	20%	20%	1,801 families
number of families raising more than 5 ducks	19%	17%	17%	1,525 families
Total number of families raising goats or sheep	0%	0%	0%	2 families
Total number of families raising horses	0%	0%	0%	0 families

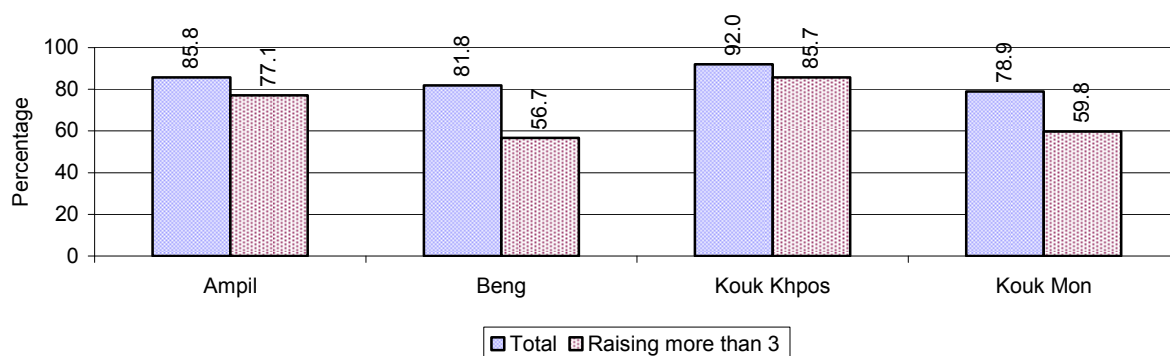
Note: Calculated against the total number of families

2.5.29 Percentage Families raising Pigs, by Commune, in 2008



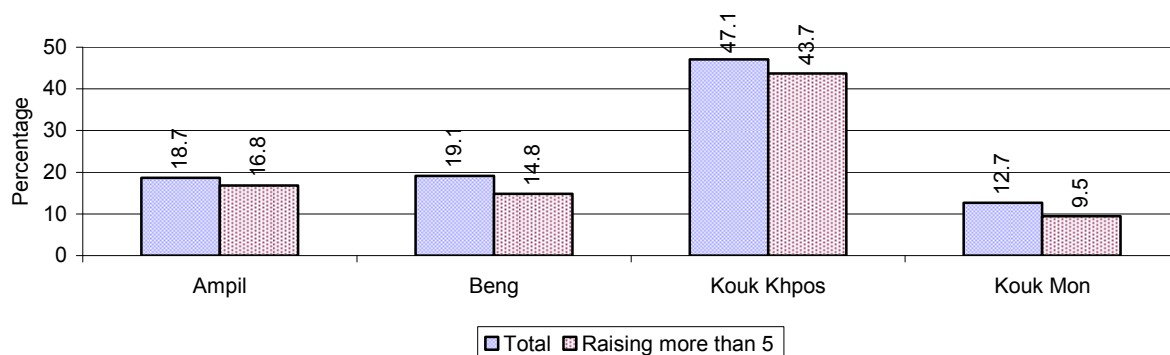
Note: Calculated against the total number of families in the commune

2.5.30 Percentage Families raising Chickens, by Commune, in 2008



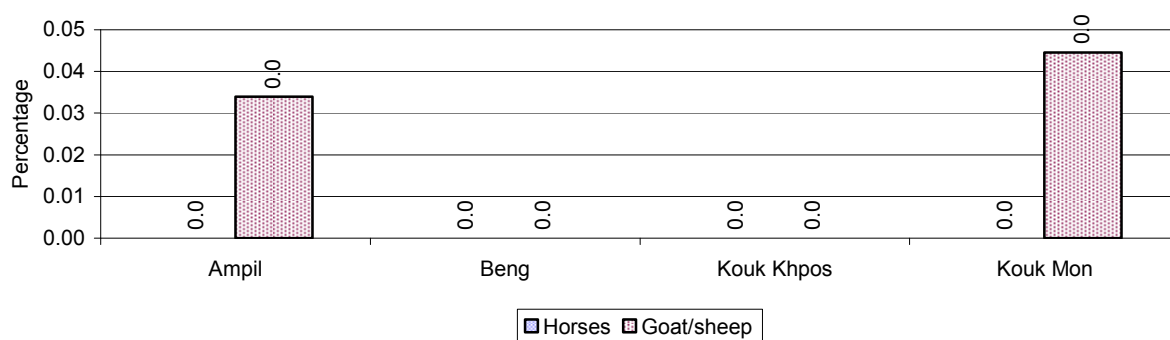
Note: Calculated against the total number of families in the commune

2.5.31 Percentage Families raising Ducks, by Commune, in 2008



Note: Calculated against the total number of families in the commune

2.5.32 Percentage Families raising Horses, Goats or Sheep, by Commune, in 2008

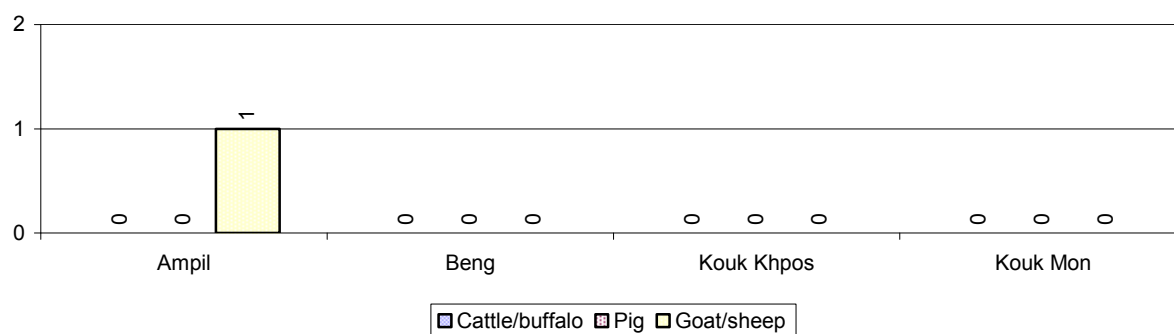


Note: Calculated against the total number of families in the commune

2.5.33 Livestock Farms over 3 years

Description	2006	2007	2008
Number of cattle/buffalo farms	6 farm(s)	51 farm(s)	0 farm(s)
Number of pig farms	2 farm(s)	45 farm(s)	0 farm(s)
Number of goat/sheep farms	3 farm(s)	0 farm(s)	1 farm(s)
Number of chicken farms	1 farm(s)	1 farm(s)	5 farm(s)
Number of duck farms	1 farm(s)	1 farm(s)	0 farm(s)

2.5.34 Number Livestock Farms, by Commune in 2008



Note: Number of farms are recorded by the village chief, not by counting number of livestock in each farm

2.5.35 Number Chicken and Duck Farms, by Commune, for 2008



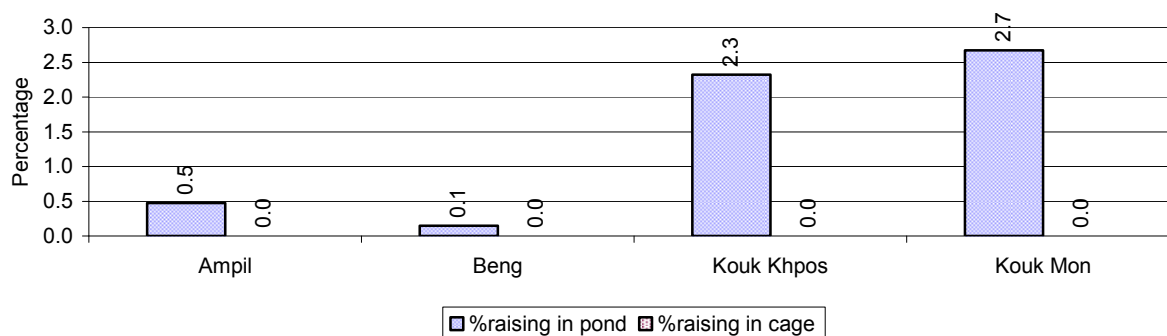
Note: Number of farm places recorded by village chief, not by counting number of livestock in each farm

2.5.36 Families raising Fish over 3 years

Description	2006	2007	2008
Total number of families raising fish	135 families	81 families	100 families
% families raising fish	2%	1%	1%
Number families raising fish in pond	135 families	81 families	100 families
% families raising fish in pond	2%	1 %	1%
Number fish pond	129 pond(s)	83 pond(s)	98 pond(s)
No. of ponds per family	1.0 pond/families	1.0 pond/families	1.0 pond/families
Number of families raising fish in cage	0 families	0 families	0 families
%families raising fish in cage	0 %	0 %	0%
Number of fish cage	0 cage(s)	0 cage(s)	0 cage(s)
No. of fish cage per family	- cage /families	- cage /families	- cage /families

Note: % of families raising fish or fish in ponds or cages is calculated a percentage of the total number of families.

2.5.37 Percentage of Families raising Fish, by Commune, in 2008



Note: Calculated as a percentage of the total number of families in the commune.

2.5.38 Shrimp and Prawn Farming over 3 years

Description	2006	2007	2008
Number of families raising shrimps	0 families	0 families	0 families
% Families raising shrimps	0%	0%	0%
Number of shrimp ponds	0 pond	0 pond	0 pond
Total area raising shrimps	0 ha	0 ha	0 ha
Area per family	-ha/families	-ha/families	-ha/families
Number of families raising prawns	0 families	0 families	0 families
% families raising prawns	0%	0%	0%
Number prawn ponds	0 pond	0 pond	0 pond
Ponds per families	- pond/families	-pond/families	-pond/families
Number of prawn cages	0 cage	0 cage	0 cage
Cages per families	0 cage /families	0 cage /families	0 cage /families

Note: Percentage of families raising either prawns or shrimp is calculated against the number of families, who do aquaculture farming, NOT the total population.

2.5.39 Numbers of Families raising Shrimps and number of Shrimp Ponds, by Commune, in 2008

There were none of these in this District in 2008

2.5.40 Number of Families raising Prawn and Number of Prawn Ponds/Cages, by Commune, in 2008

There were none of these in this District in 2008

3 Social Aspects

3.1 Education

3.1.1 Kindergarten in the District over 3 years

Description	2006	2007	2008
Number of community kindergarten schools	4 school(s)	12 school(s)	9 school(s)
Number of community kindergarten class rooms	4 room(s)	11 room(s)	10 room(s)
Number of community kindergarten classes	4 class(es)	13 class(es)	13 class(es)
Number of community kindergarten teachers	6 person(s)	13 person(s)	13 person(s)
Number of women community kindergarten teachers	5 women	12 women	13 women
Number of state and private kindergarten schools	2 school(s)	2 school(s)	2 school(s)
Number of state and private kindergarten class rooms	2 room(s)	2 room(s)	2 room(s)
Number of state and private kindergarten classes	2 class(es)	2 class(es)	2 class(es)
Number of state and private kindergarten teachers	2 person(s)	2 person(s)	2 person(s)
Number of women state and private kindergarten teachers	2 women	2 women	2 women

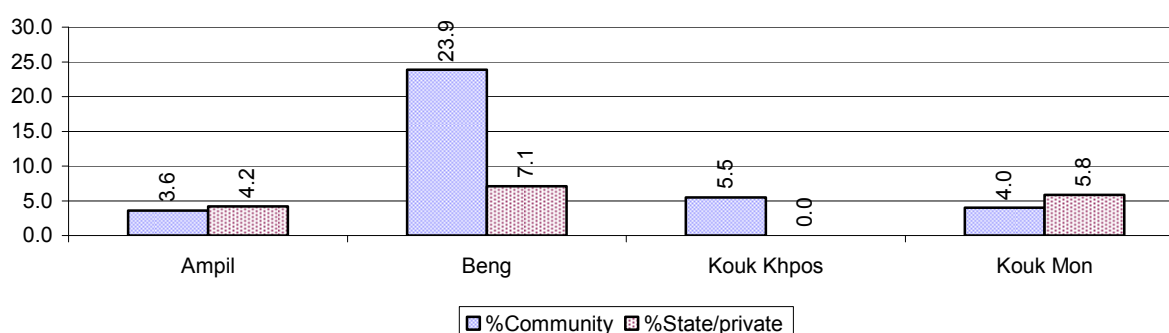
3.1.2 Percentage enrolment at Kindergarten level over 3 years

This table shows the percentage of the total 3-5 year old population attending kindergarten.

Description	2006 %	2007 %	2008	
			%	Number
Total percentage of children, 3-5 yrs, go to kindergarten	7%	13%	16%	444 person(s)
Percentage of children, 3-5 yrs, go community kindergarten	5%	12%	11%	305 person(s)
Percentage children, 3-5 yrs, go state/private kindergarten	3%	1%	5%	139 person(s)

Note: Calculated against the total for that age group

3.1.3 Percentage of Children 3-5 yrs attending Kindergarten, by Commune, in 2008



3.1.4 Basic Education over 3 years

Primary School

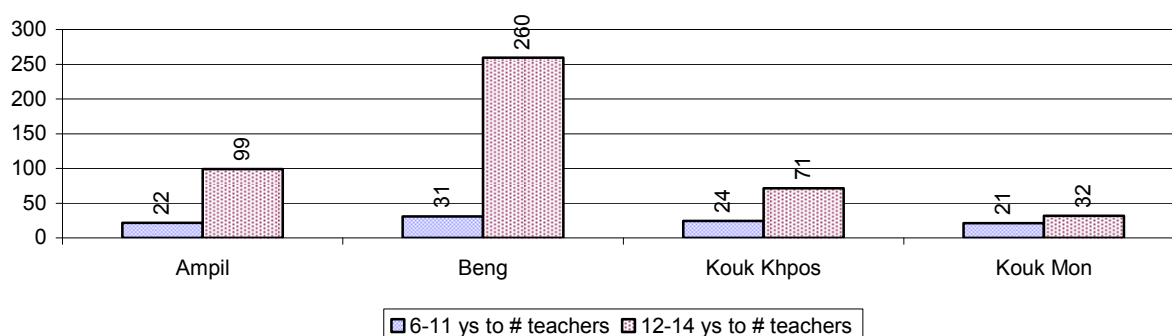
Description	2006	2007	2008
Number of primary schools	55 school(s)	37 school(s)	68 school(s)
Number of primary school rooms	222 room(s)	149 room(s)	260 room(s)
Number of primary classes	303 class(es)	207 class(es)	318 class(es)
Number of primary teachers	220 person(s)	148 person(s)	236 person(s)
Ratio of children 6-11 yrs to school	121	162	84
Ratio of children 6-11 yrs to school room	30	40	22
Ratio of children 6-11 yrs to class	22	29	18
Ratio of children 6-11 yrs to teacher	30	41	24

Note: According to education norm, children 6-11 yrs should attend primary school, while 12-14 yrs should be in lower secondary school, but in reality this varies.

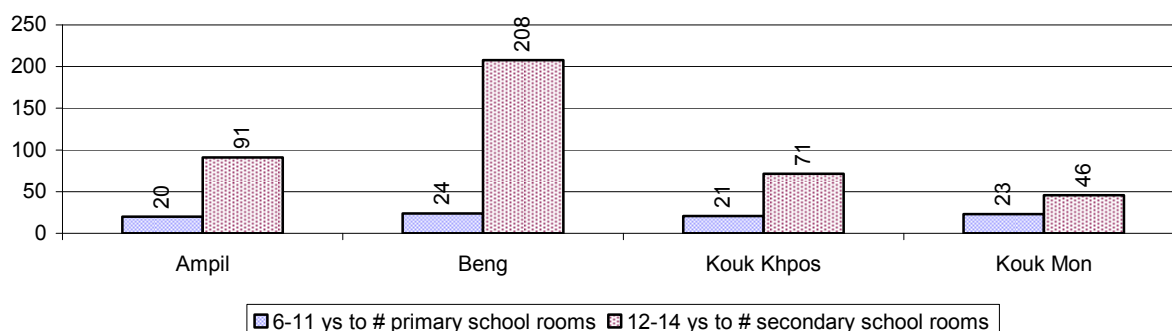
Lower Secondary School

Description	2006	2007	2008
Number of lower secondary schools	4 school(s)	3 school(s)	5 school(s)
Number of lower secondary school rooms	26 room(s)	19 room(s)	42 room(s)
Number of lower secondary classes	31 class(es)	27 class(es)	37 class(es)
Number of lower secondary teachers	36 person(s)	32 person(s)	49 person(s)
Ratio children 12-14 yrs to school	928	1,178	680
Ratio of children 12-14 yrs to school room	143	186	81
Ratio of children 12-14 yrs to class	120	131	92
Ratio of children 12-14 yrs to teacher	103	110	69

3.1.5 Ratio of 6-11 year old and 12-14 year old Children to number of Teachers, by Commune, in 2008



3.1.6 Ratio of 6-11 year old and 12-14 year old Children to number of School Rooms, by Commune, in 2008



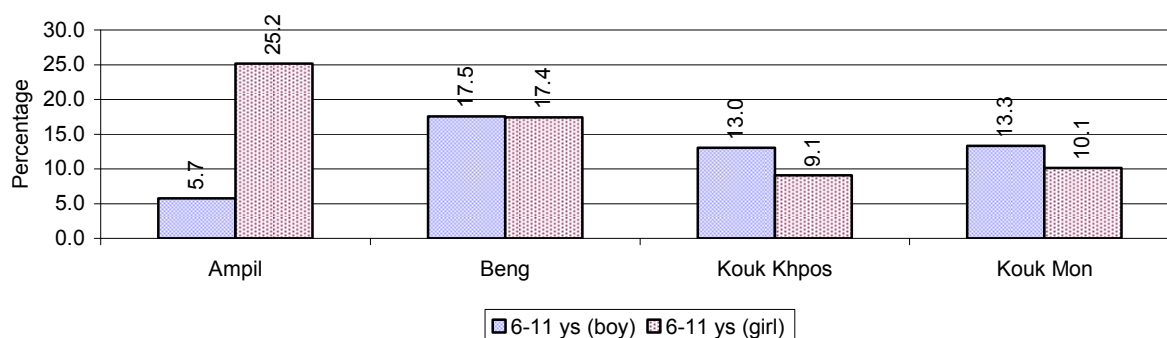
3.1.7 Enrolment status at Primary Level over 3 years

Description	2006 %	2007 %	2008	
			%	Number
Total children aged 6-11 years old	16%	15%	14%	5,718 person(s)
Total children aged 6-11 who are in school	78%	82%	85%	4,872 person(s)
Total children aged 6-11 who are not in school	22%	18%	15%	846 person(s)
Total girls aged 6-11 years old	16%	15%	15%	2,886 person(s)
Total girls aged 6-11 who are in school	77%	79%	83%	2,390 person(s)
Total girls aged 6-11 who are not in school	23%	21%	17%	496 person(s)
Total boys aged 6-11 years old	16%	16%	14%	2,832 person(s)
Total boys aged 6-11 who are in school	79%	85%	88%	2,482 person(s)
Total boys aged 6-11 who are not in school	21%	15%	12%	350 person(s)

Note 1: Percentage is calculated on the basis of the total number of children within 6-11 year age group for the first 3 rows and for the total girls and the total boys aged 6-11 yrs.

Note 2: Number of girls aged 6-11 who are in & not in school is calculated against the total number of girls aged 6-11 yrs. Number boys, 6-11 yrs who are in & not in school are calculated against the total number of boys aged 6-11 yrs.

3.1.8 Percentage of 6-11 year old Children not in School, by Commune, in 2008



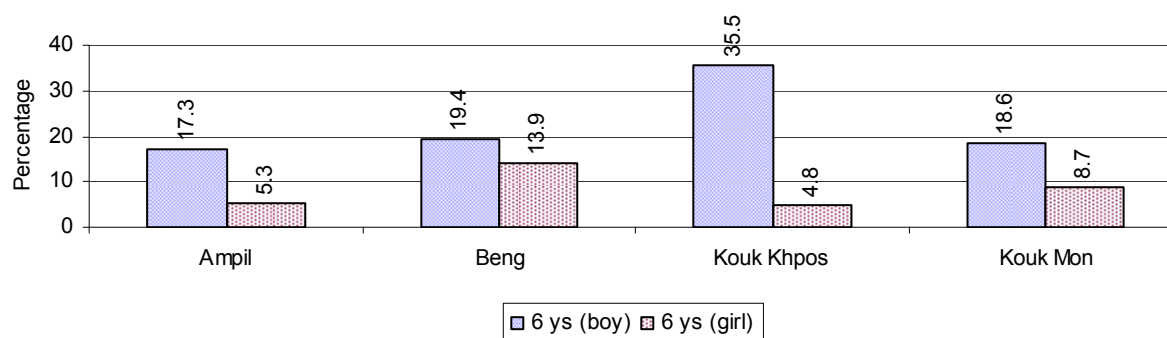
Note: calculated on the basis of the total number of children within 6-11 year age group in the commune.

3.1.9 Enrolment of 6 year old Children over 3 years

Description	2006 %	2007 %	2008	
			%	Number
Total % and number of children aged 6 years old	4%	3%	3%	1,162 person(s)
Total % of children aged 6 years old in school	72%	84%	84%	976 person(s)
Total % of children aged 6 years old not in school	28%	16%	16%	186 person(s)

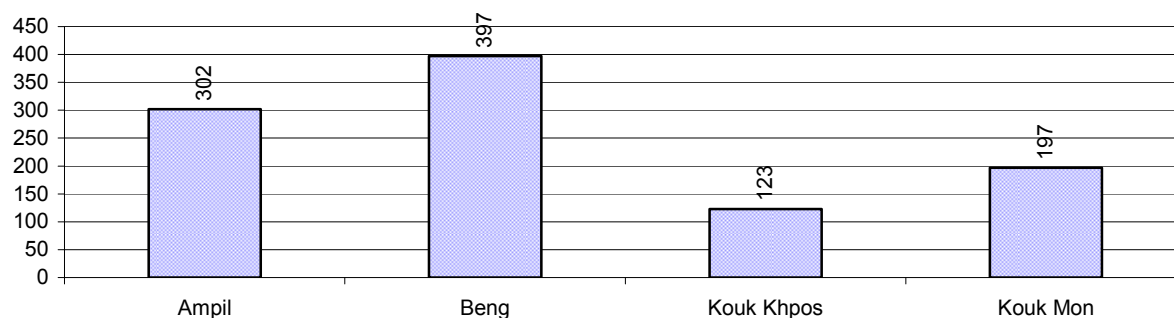
Note: First row calculated as a percentage of total population. Second and third row calculated as a percentage of the total number of 6 year olds.

3.1.10 Percentage of 6 year old Children not in School, by Commune, in 2008



Note: Calculated as a percentage of total 6 year old population

3.1.11 Number of 5 year old Children in each Commune in 2008

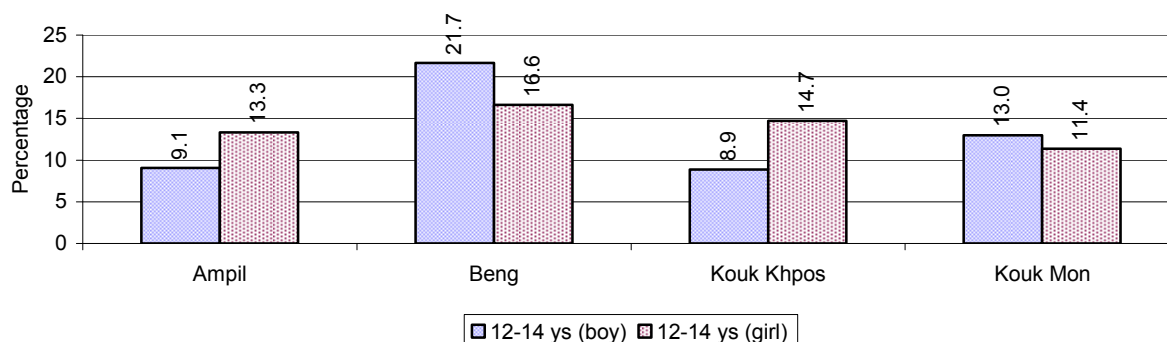


3.1.12 Enrolment at Lower Secondary Level over 3 years

Description	2006 %	2007 %	2008	
			%	Number
Total children aged 12-14 years old	9%	9%	9%	3,402 person(s)
Children aged 12-14 years old in school	75%	78%	86%	2,926 person(s)
Children aged 12-14 years old not in school	25%	22%	14%	476 person(s)
Total girls aged 12-14 years old	9%	9%	8%	1,641 person(s)
Girls aged 12-14 years old in school	73%	77%	86%	1,412 person(s)
Girls aged 12-14 years old not in school	27%	23%	14%	229 person(s)
Total boys aged 12-14 years old	9%	9%	9%	1,761 person(s)
Boys aged 12-14 years old in school	76%	79%	86%	1,514 person(s)
Boys aged 12-14 years old not in school	24%	21%	14%	247 person(s)

Note: Percentage is calculated on the basis of number of the total number of children within 12-14 yrs group, except for the first row of each section which is calculated on the basis of the total population.

3.1.13 Percentage of 12-14 year olds not in School, by Commune, in 2008



Note: Calculated as a percentage of the total 12-14 year old population in each commune

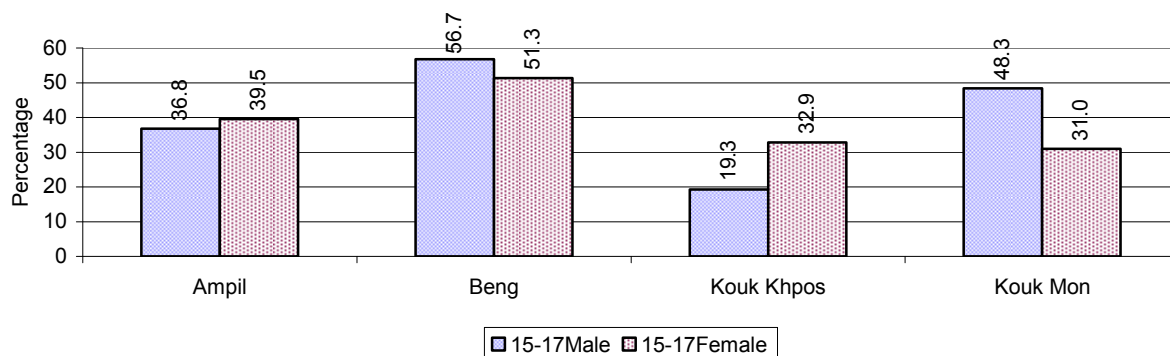
3.1.14 Upper Secondary Schools over 3 years

Description	2006	2007	2008
Number of upper secondary schools	0 school(s)	1 school(s)	1 school(s)
Number of upper secondary school rooms	0 room(s)	0 room(s)	3 room(s)
Number of upper secondary classes	0 class(es)	2 class(es)	3 class(es)
Number of upper secondary teachers	0 person(s)	2 person(s)	3 person(s)
Ratio of 15-17 yr olds to number of school	N/A	3,610	3,571
Ratio of 15-17 yr olds to number of school room	N/A	N/A	1,190
Ratio of 15-17 yr olds to number of classes	N/A	1,805	1,190
Ratio of 15-17 yr olds to number of teacher	N/A	1,805	1,190

3.1.15 Enrolment of 15-17 year old teenagers over 3 years

Description	2006	2007	2008
Number of teenage, 15-17 years old	3,462 person(s)	3,610 person(s)	3,571 person(s)
Number of teenage, 15-17 years old, who are not studying	1,380 person(s)	1,494 person(s)	1,508 person(s)
Percentage of teenage, 15-17 years old not studying	40%	41%	42%

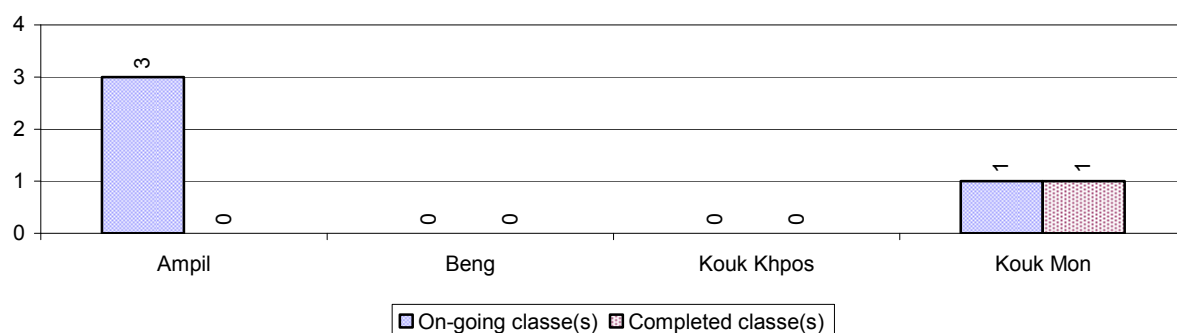
3.1.16 Percentage of 15-17 year old Teenagers not at School, by Commune, in 2008



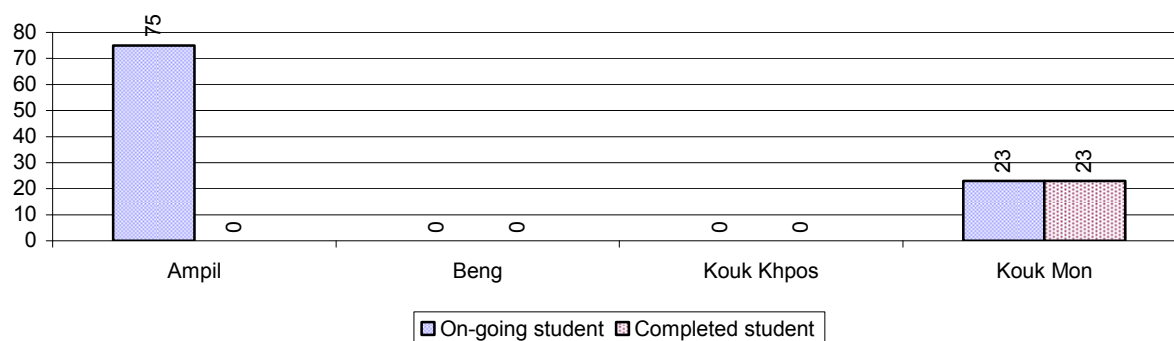
3.1.17 Literacy Classes as of 2008

Literacy classes	Organized by:		Other Program(s)	Total
	PDoEYS	NGOs		
Number of On-going literacy classes	4 class(es)	0 class(es)	0 class(es)	4 class(e(s)
Number of literacy students in on-going classes	98 person(s)	0 person(s)	0 person(s)	98 person(s)
Completed literacy class(es)	1 classes	0 classes	0 classes	1 classes
Number of literacy students that have completed literacy classes	23 person(s)	0 person(s)	0 person(s)	23 person(s)
Number of students that passed	19 person(s)	0 person(s)	0 person(s)	19 person(s)

3.1.18 Number of on-going and completed Literacy Classes, by Commune, in 2008



3.1.19 Students of on-going & completed Literacy Classes, by Commune, in 2008

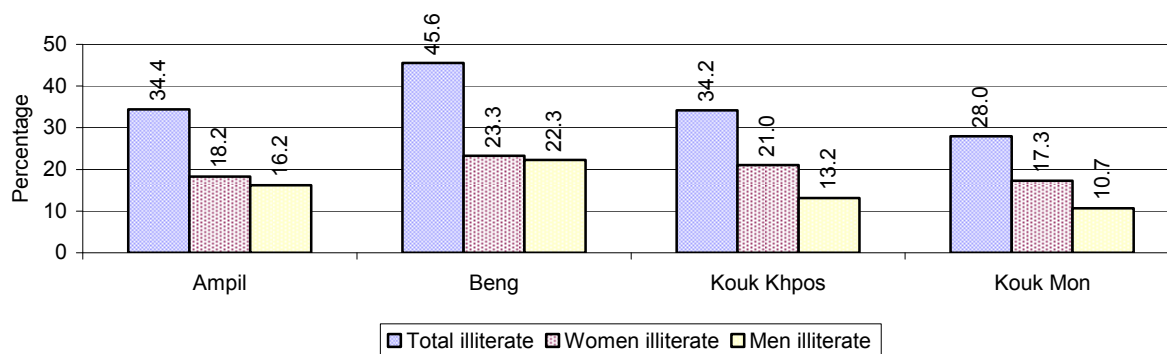


3.1.20 Percentage of illiterate People between 15-60, over 3 years

Illiteracy Status	2006 %	2007 %	2008	
			%	Number
Illiterate people, 15-60 years old	42%	38%	36%	8,827 person(s)
Illiterate females, 15-60 years old	23%	20%	20%	4,847 person(s)
Illiterate people, 15-17 years old	24%	20%	19%	695 person(s)
Illiterate females, 15-17 years old	13%	10%	10%	369 person(s)
Illiterate people, 18-24 years old	38%	32%	29%	1,847 person(s)
Illiterate females, 18-24 years old	20%	17%	15%	994 person(s)
Illiterate people, 25-60 years old	48%	46%	44%	6,285 person(s)
Illiterate females, 25-60 years old	27%	24%	24%	3,484 person(s)

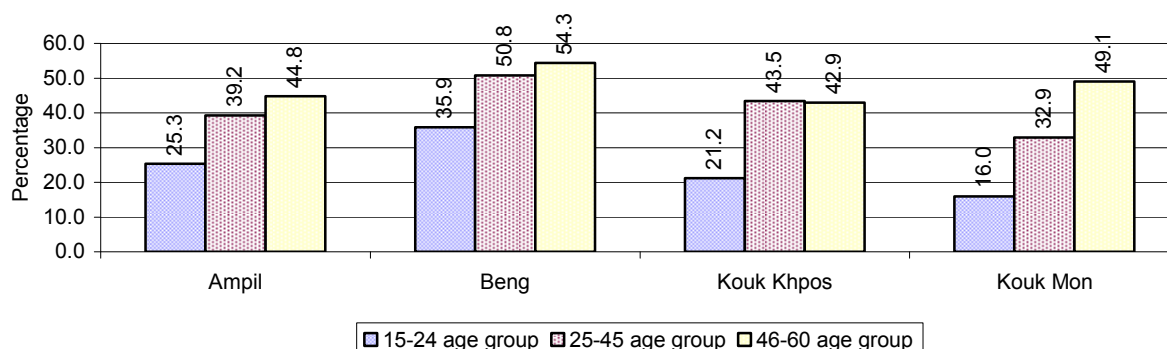
Note: Percentage is calculated on the basis of number of people in age each group.

3.1.21 Percentage illiterate People among 15-60 yrs old, by Commune, in 2008



Note: Percentages are calculated on the basis of number of people in that age group.

3.1.22 Percentage illiterate People for 15-24 yrs, 25-45 yrs and 46-60 yrs, by Commune, in 2008



Note: Percentage of illiterate people in each age group is calculated on the basis of number of people in that age group.

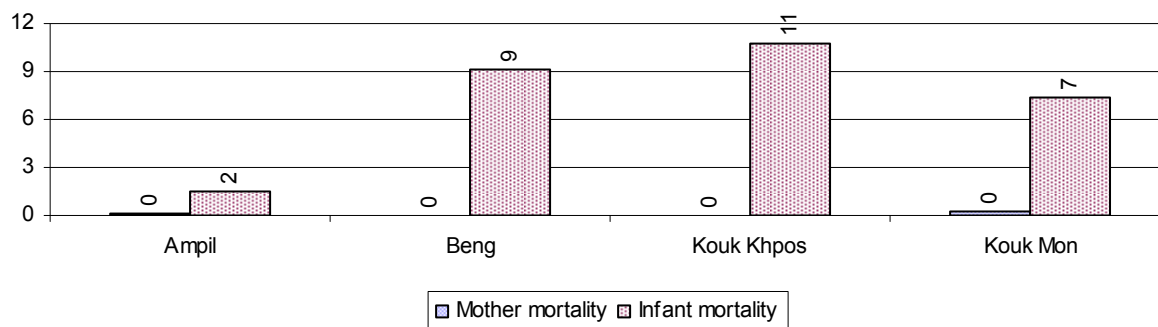
3.2 Health

3.2.1 Health Situation of Women and Children, over 3 years

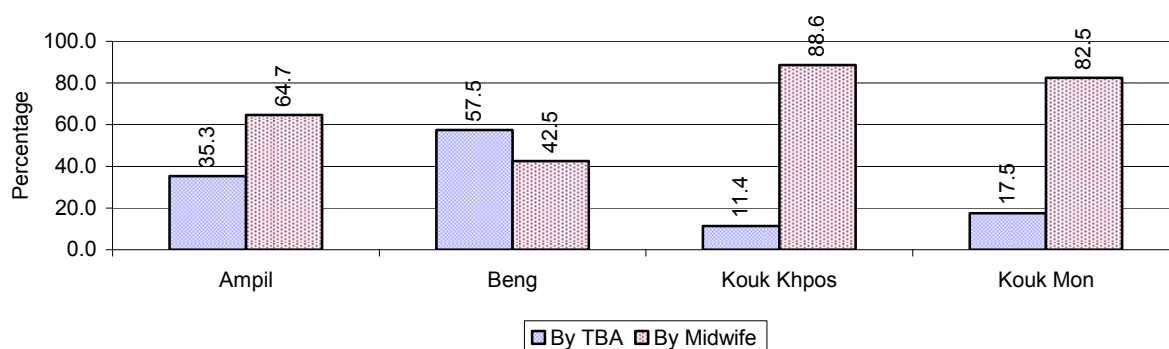
Description	2006	2007	2008
Number families with a birth during the year	561 families	657 families	761 families
Number of women who had their baby delivered by a TBA	410 person(s)	293 person(s)	275 person(s)
Percentage of women who had their baby delivered by a TBA	73 %	45 %	36 %
Number of women who had their baby delivered by a midwife	151 person(s)	364 person(s)	486 person(s)
Percentage of women had their baby delivered by a midwife	27 %	55 %	64 %
Number of mothers who died within 1 month of giving birth	5 person(s)	4 person(s)	4 person(s)
Mothers who died within 1 month of giving birth per 100,000 families having a delivery	891	609	526
Number of infants born during the year	569 person(s)	675 person(s)	762 person(s)
Number of Infants who died within 1 month	25 person(s)	19 person(s)	21 person(s)
Infants mortality within 1 month per 1,000 births	44	28	28
Number of children who died below the age of 5.	15 person(s)	34 person(s)	12 person(s)
Number of infants, aged 9-12 months, born during the year	326 person(s)	336 person(s)	302 person(s)
Nr. infants, aged 9-12 months, not receiving full immunization	95 person(s)	52 person(s)	56 person(s)
% of 9-12 months infants, not receiving full immunization	29 %	15 %	19 %

Note: TBA = Traditional Birth Attendant

3.2.2 Mothers dying within 0 days to 1 month of giving Birth and Infants dying within 1 month in 2008, by Commune

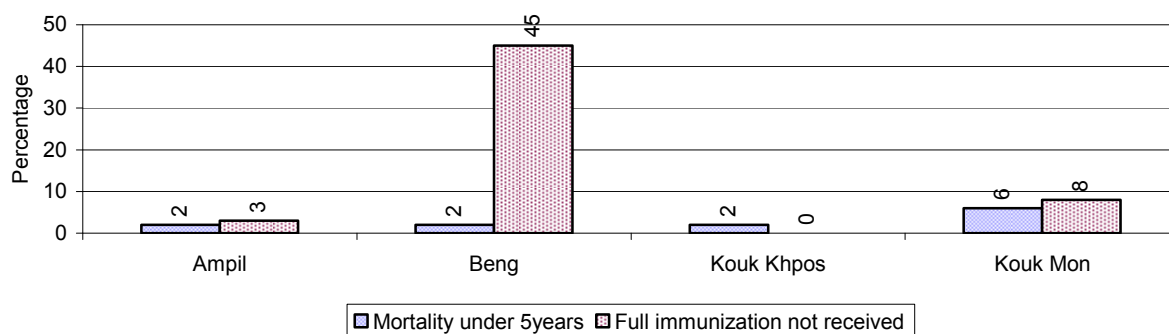


3.2.3 Percentage of Women delivering with a TBA or Midwife, by Commune



Note: Calculated as a percentage of total deliveries

3.2.4 Percentage of Children dying below 5 & of 9-12 months not receiving full Immunization, by Commune, in 2008



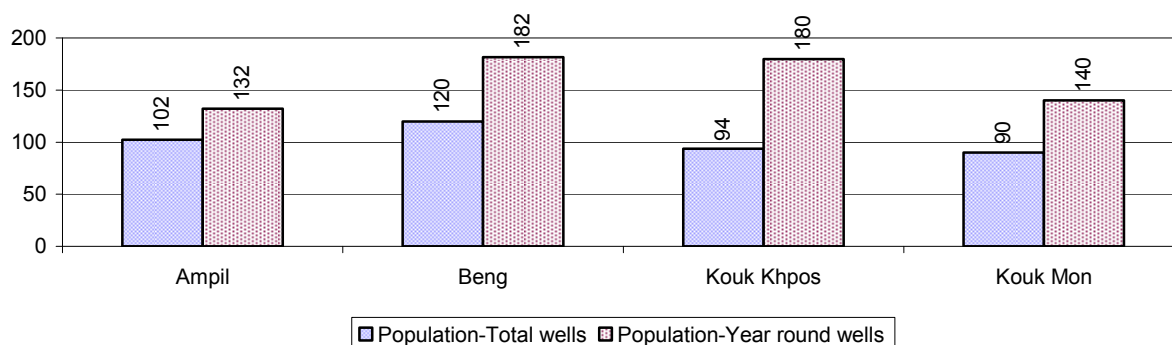
Note: Mortality rate calculated as a percentage of the total 5 year old population. Lack of immunization received calculated as a percentage of the total number 9-12 months olds there are

3.3 Water and Sanitation

3.3.1 Number of different types of Wells over 3 years

Type of wells	Number of wells by year		
	2006	2007	2008
<i>Total number of pumped or mixed wells</i>	248	234	262
Year-round usable pumped or mixed wells	204	184	195
Dry season unusable pump or mixed wells	44	50	67
Pump or mixed wells needing repair/rehabilitation	89	78	66
<i>Total number of ring wells</i>	122	122	128
Year-round usable ring wells	58	62	68
Dry season unusable ring wells	64	60	60
Ring wells needing repair/rehabilitation	70	52	51
<i>Total number of unprotected dug wells</i>	51	32	36
Year-round usable unprotected dug wells	25	11	11
Dry season unusable unprotected dug wells	26	21	25

3.3.2 Ratio of People to Wells, by Commune, in 2008

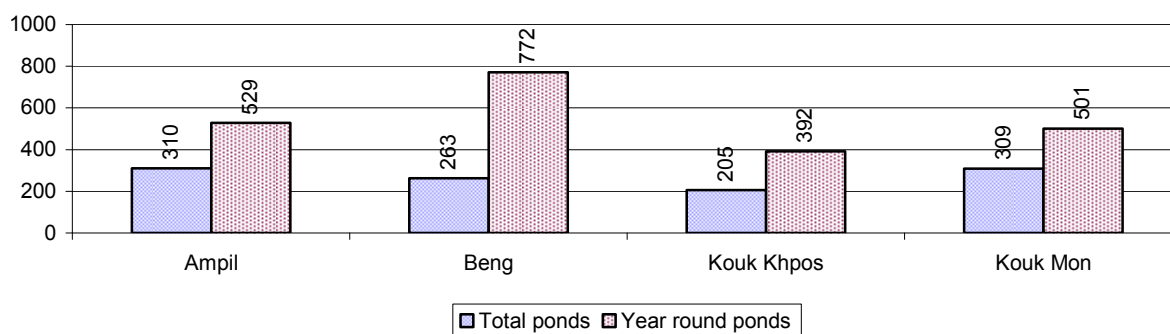


Note: Year-round wells excluding unprotected wells

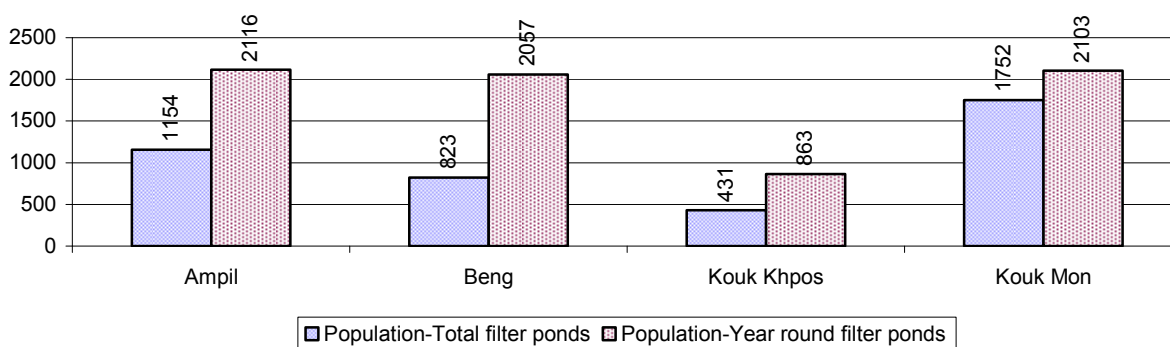
3.3.3 Potable Ponds over 3 years

Type of Pond	2006	2007	2008
<i>Total number of normal-type ponds</i>	122 pond	124 pond	143 pond
Year-round usable normal-type ponds	59 pond	65 pond	72 pond
Dry season unusable normal-type ponds	63 pond	59 pond	71 pond
Normal-type ponds needing repair/rehabilitation	63 pond	87 pond	64 pond
<i>Total number of filter ponds</i>	34 pond	29 pond	42 pond
Year-round usable filter ponds	20 pond	15 pond	22 pond
Filter ponds, dry season unusable	14 pond	14 pond	20 pond
Filter ponds needing repair/rehabilitate	16 pond	23 pond	21 pond

3.3.4 Ratio of People to normal Ponds, by Commune in 2008



3.3.5 Ratio of People to Filter Ponds, by Commune, in 2008

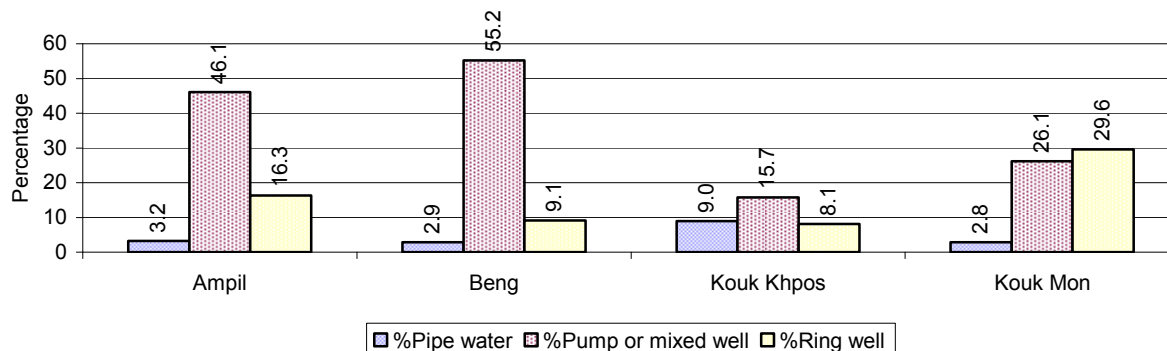


3.3.6 Source of potable Water for Households, over 3 years

Water sources	2006	2007	2008	
	%	%	%	Number
Families using water from purification system	1%	0 %	4 %	322 families
Families using water from pump, mixed wells	40%	34 %	41 %	3,593 families
Families using water from ring wells and open dug wells	18%	16 %	17 %	1,469 families
Families using water from pond	26%	32 %	29 %	2,529 families
Families using water from rain water storage	2%	1 %	1 %	85 families
Families using water from rivers, lakes, natural ponds and reservoirs	14%	16 %	10 %	858 families

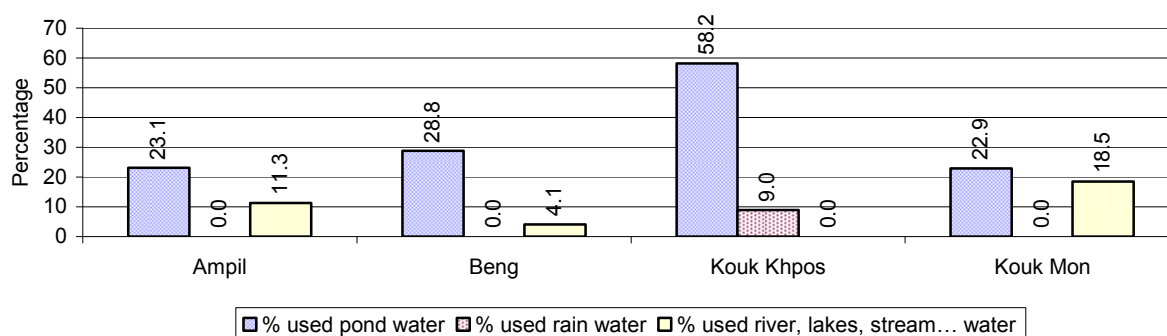
Note: Calculated as a percentage of the total number of families.

3.3.7 Percentage Families using different Water Sources, by Commune, in 2008



Note: Calculated as a percentage of the total number of families in each commune

3.3.8 Percentage Families using Water from Rain Water Storage, Ponds and natural Sources (rivers/lakes/natural ponds/reservoirs), by Commune, 2008



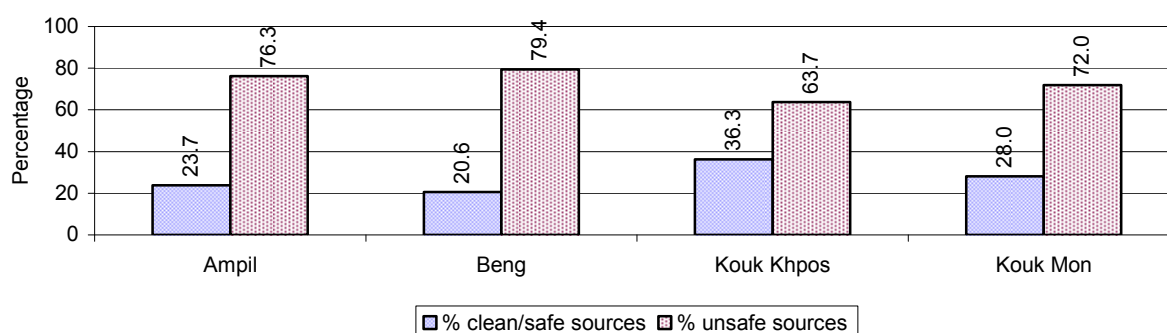
Note: Calculated as a percentage of the total number of families in each commune

3.3.9 Drinking Water Sources in the dry Season over 3 years

Percentage Families that get drinking water from:	2006	2007	2008	
	%	%	%	Number
from clean/safe sources	42 %	31 %	25 %	2,232 families
from unsafe sources	58 %	69 %	75 %	6,624 families

Note: Calculated as a percentage of the total number of families.

3.3.10 Percentage Families using safe and unsafe Water Sources in the dry Season, by Commune, in 2008



Note: Calculated as a percentage of the total number of families in each commune.

3.3.11 Drinking Water Purification by Households, over 3 years

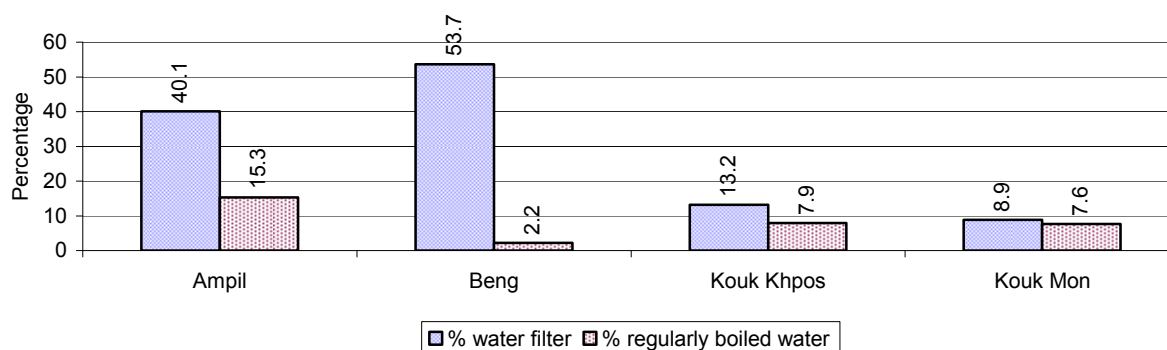
This table shows the different ways families make water safe for drinking.

Families, who:	2006	2007	2008	
	%	%	%	Number
Filter water for drinking	39%	28%	33 %	2,964 families
Boil water for drinking	13%	11%	9 %	756 families

Note: Calculated as a percentage of the total number of families

3.3.12 Percentage Families filtering Water or regularly boiling Water, by Commune, in 2008

This graph shows the different ways families make drinking water safe.



Note: Calculated on as a percentage of the total number of families in each commune.

3.3.13 Families' access to Water, over 3 years

Families access to water	2006	2007	2008	
	%	%	%	Number
Families with water at home or in less then 150m	50%	17%	22 %	1,959 families
Families with water 150m or more away from home	22%	12%	12 %	1,080 families

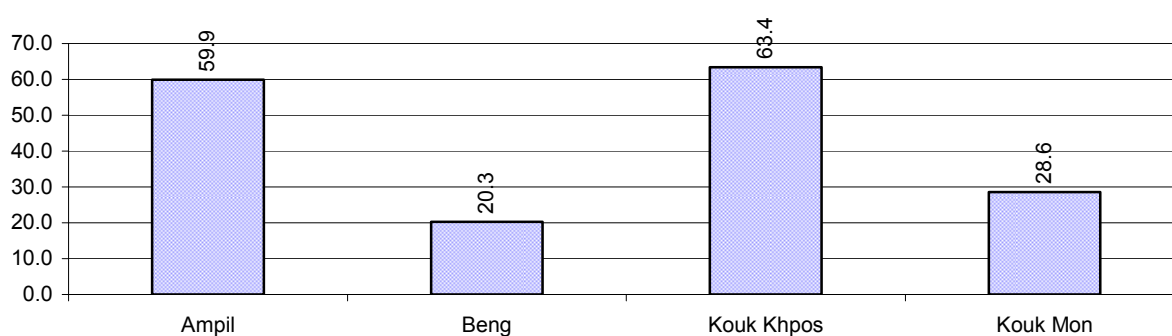
Note: Calculated as a percentage of the total number of families

3.3.14 Ratio of people to Latrines over 3 years

Description	2006	2007	2008	
	Ratio	Ratio	Ratio	Number
Ratio of people to latrines	76.5	62.6	31.7	1,256.0

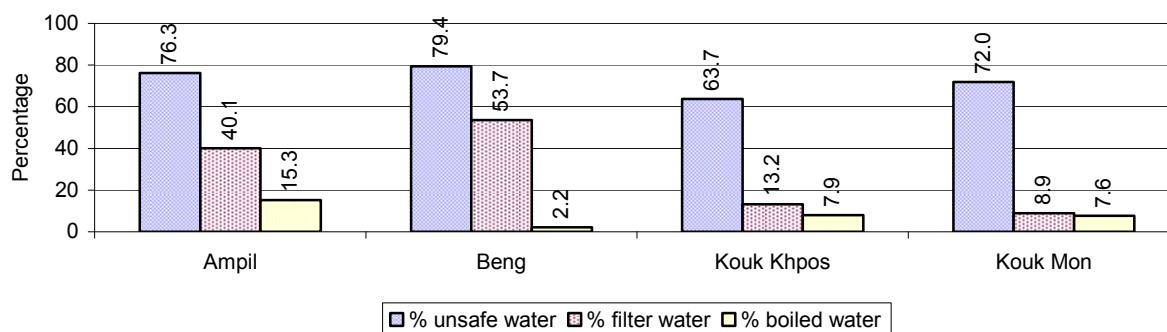
Note: Ratio calculated by dividing the number of houses with latrines by the total population

3.3.15 Ratio of People to Latrines, by Commune, in 2008



Note: Ratio calculated by dividing the number of houses with latrines by the total population in a Commune.

3.3.16 Percentage of Families drinking boiled, filtered or unsafe Water, by Commune, in 2008



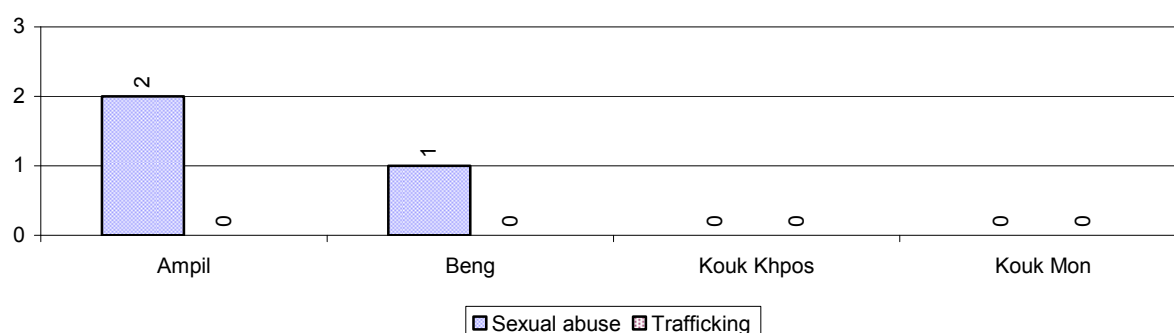
Note: Calculated as a percentage of the total number of families in each commune.

3.4 Vulnerable groups

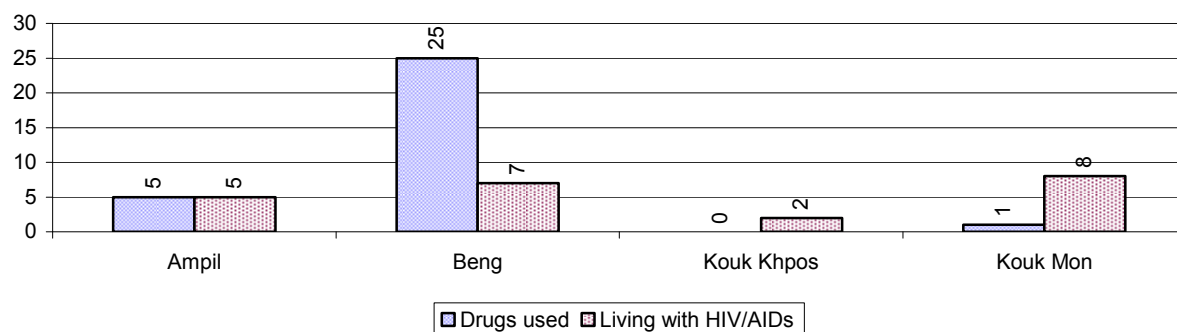
3.4.1 Vulnerable Groups in need of special Protection over 3 years

Vulnerable groups	2006	2007	2008
Victims of sexual abuse	7 person(s)	6 person(s)	3 person(s)
Victims of human trafficking	30 person(s)	12 person(s)	0 person(s)
Families with family member(s) using drugs	35 families	13 families	31 families
Families with family member(s) living with HIV/AIDS	9 families	15 families	22 families
Children under 18 yrs old whose parent died of AIDS	38 person(s)	27 person(s)	31 person(s)
Orphaned/abandoned children under 18 yrs old (all cases)	515 person(s)	665 person(s)	388 person(s)
Elderly persons without guardian	133 person(s)	126 person(s)	86 person(s)
Disabled people able to earn an income	50 person(s)	53 person(s)	45 person(s)
Disabled people unable to earn an income	74 person(s)	69 person(s)	75 person(s)
Disabled people under 18 yrs old	35 person(s)	23 person(s)	26 person(s)
Victims of natural disasters	458 families	1,447 families	396 families
Victims of land mines and unexploded weapons	68 person(s)	37 person(s)	19 person(s)

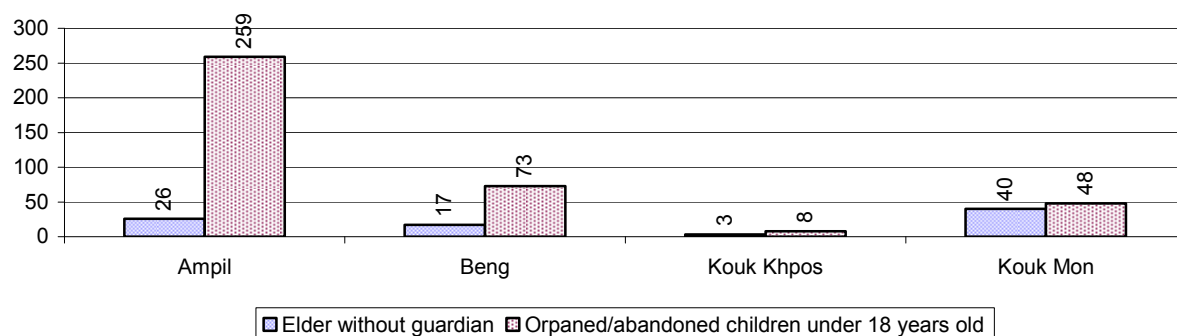
3.4.2 Registered Victims of sexual Abuse or Trafficking, by Commune, for 2008



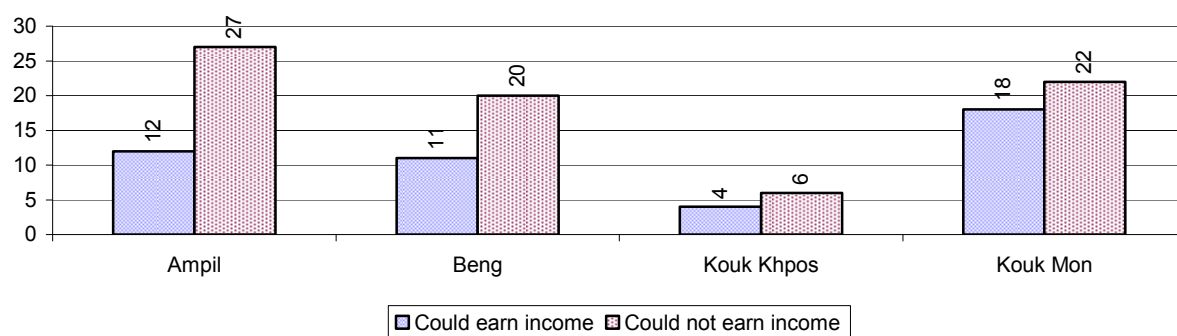
3.4.3 Registered Families with Member(s) using Drugs or living with HIV/AIDS, by Commune, for 2008



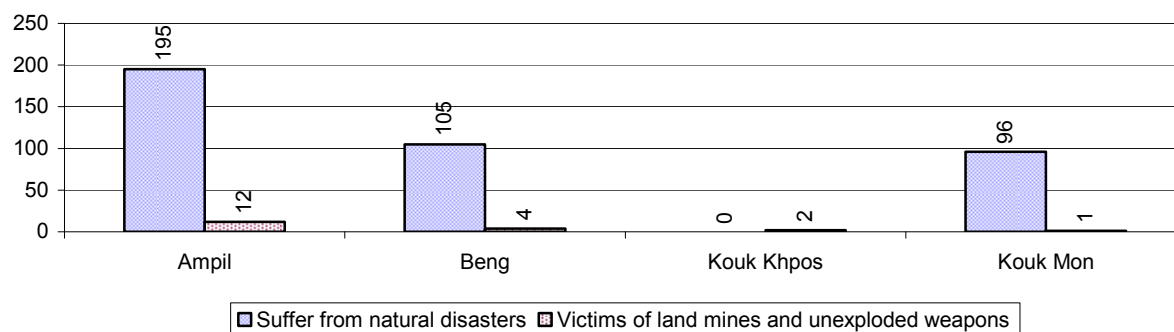
3.4.4 Elderly Persons without a Guardian and orphaned/abandoned Children under 18 years old, by Commune, for 2008



3.4.5 Number of disabled People who could or could not earn an Income, by Commune, for 2008



3.4.6 Number of Families who suffered from natural Disasters, and number of Victims of Land Mines and unexploded Weapons, by Commune, in 2008



3.5 Migration

3.5.1 Migration over 3 years

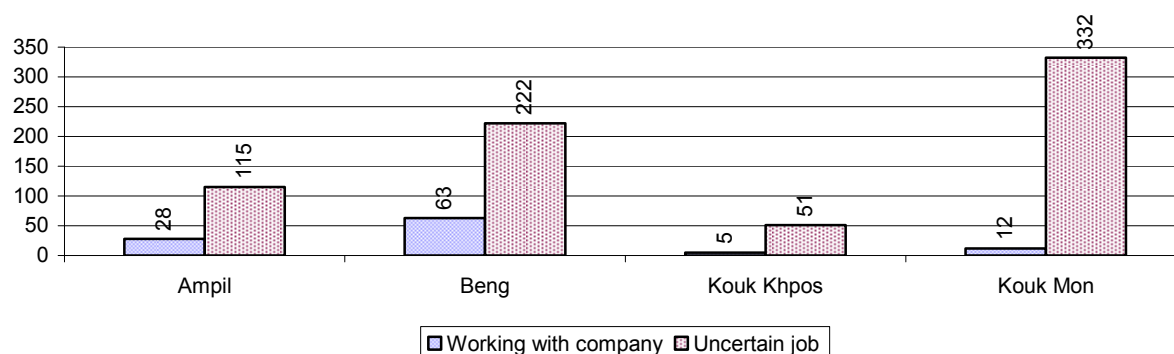
Description	2006	2007	2008
Number of families permanently in-migrated	143 families	113 families	72 families
Total number of people	548 person(s)	469 person(s)	261 person(s)
Total number of female	281 person(s)	254 person(s)	131 person(s)
Number of families permanently out-migrated	66 families	90 families	84 families
Total number of people	298 person(s)	319 person(s)	301 person(s)
Total number of female	141 person(s)	147 person(s)	139 person(s)
Number of families staying temporarily	28 families	59 families	54 families
Total number of people	107 person(s)	230 person(s)	195 person(s)
Total number of female	54 person(s)	118 person(s)	97 person(s)

3.5.2 Job Migration

Description	2006	2007	2008
Number of people migrated to work with company/factory	0%	0%	1% 108 persons
Number of people migrated to work, but have uncertain jobs	4%	4%	3% 720 persons

Note: Calculated as a percentage of the total population of 18-60 year olds

3.5.3 Number of People working outside their home Villages in a Company/Factory or with an uncertain Job in 2008

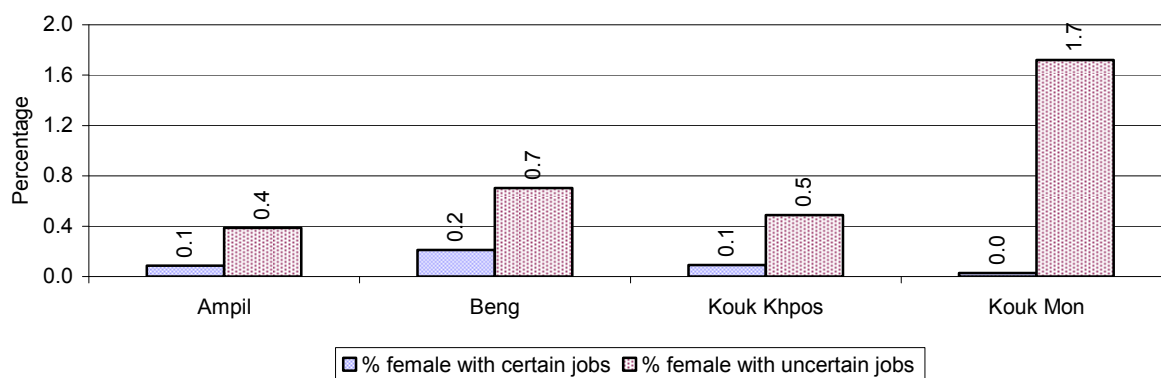


3.5.4 Female migration over 3 years

Description	2006 %	2007 %	2008	
			%	Number
Total number of migrants	2.0%	2.3%	2.1%	828 person(s)
Number of female migrants	1.0%	1.0%	1.0%	382 person(s)
Total number of migrants, who go to work with company/factory (with certain jobs)	0.1%	0.1%	0.3%	108 person(s)
Number of female migrants with certain jobs	0.0%	0.0%	0.1%	44 person(s)
Total number of migrants with uncertain jobs	1.9%	2.2%	1.8%	720 person(s)
Number of female migrants with uncertain jobs	0.9%	1.0%	0.8%	338 person(s)

Note: Calculated as a percentage of the total population

3.5.5 Percentage female Migrants with certain and uncertain Jobs, by Commune, in 2008



Note: Calculated as a percentage of the total population of the commune

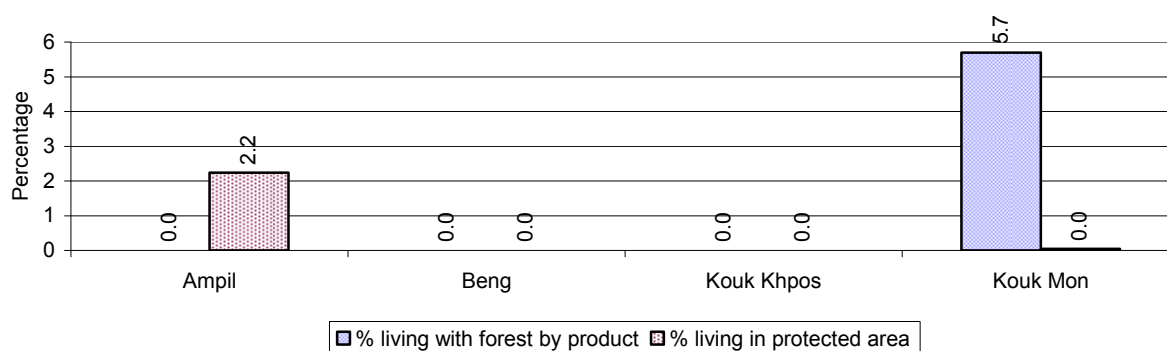
4 Natural Resources and Environment (NRE)

4.1 Families involved with NRE issues over 3 years

Description	2006 %	2007 %	2008	
			%	Number
Families living with forest by products	0 %	0 %	1 %	128 families
Families living in a protected area	1 %	4 %	1 %	67 families
Houses with access to garbage collection service	0 %	0 %	0 %	1 families
Families affected by environmental pollution	2 %	2 %	0 %	10 families
Families using chemical fertilizer	67 %	69 %	72 %	6,342 families
Families using chemical pesticide	22 %	21 %	24 %	2,119 families

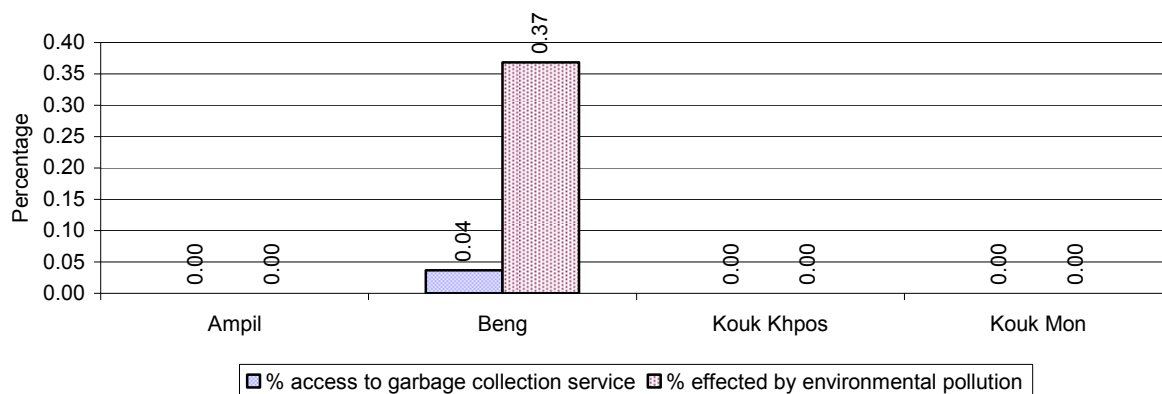
Note: Calculated as a percentage of the total number of families

4.2 Percentage of Families involved with Natural Resource issues, by Commune, for 2008



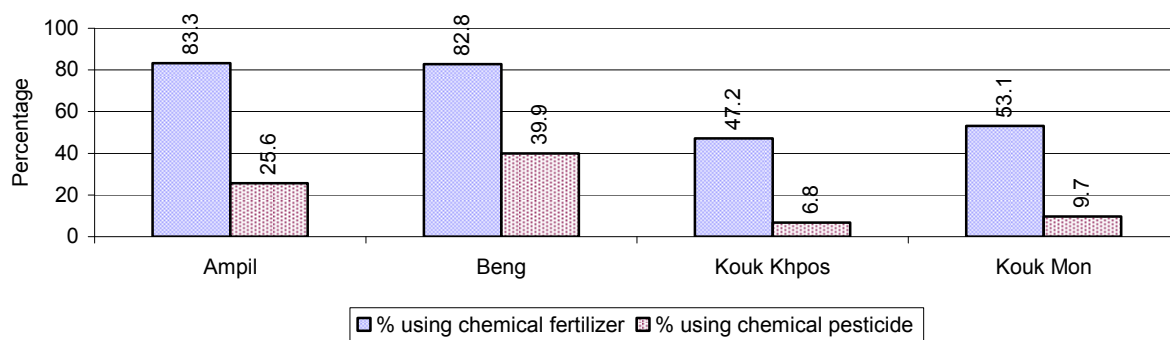
Note: Calculated as a percentage of the number of families in each commune

4.3 Percentage Houses with access to Garbage collection and Families affected by environmental Pollution, by Commune, for 2008



Note: Garbage collection is calculated as a percentage of the total number of houses in each commune and families affected by environmental pollution is calculated as a percentage of the total number of families in each commune.

4.4 Percentage Families using chemical Fertilizer and chemical Pesticides, by Commune, for 2008



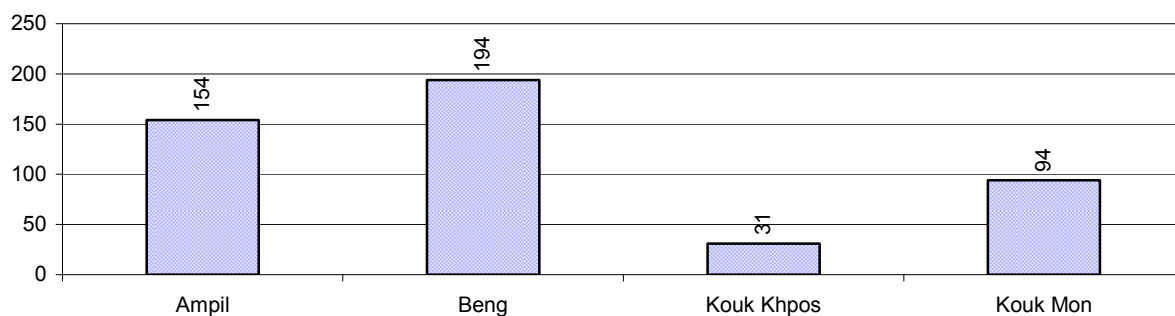
Note: Calculated as a percentage of the total number of families in each commune

5 Administration and Security

5.1 Birth Registration across 3 years

Description	2006	2007	2008
Number of infants to be registered	544 person(s)	656 person(s)	741 person(s)
Number of unregistered infants the year	260 person(s)	388 person(s)	473 person(s)
Percentage of infants unregistered	48 %	59 %	64 %

5.2 Number of unregistered Infants born in 2008, by Commune

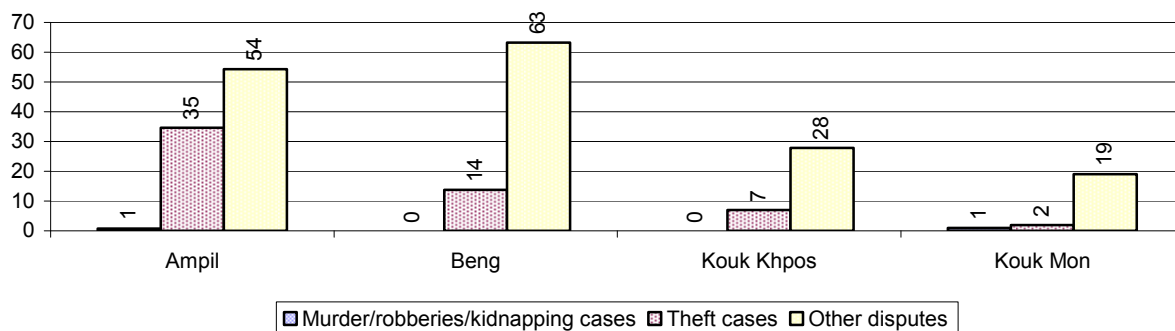


5.3 Registered criminal Cases over 3 years

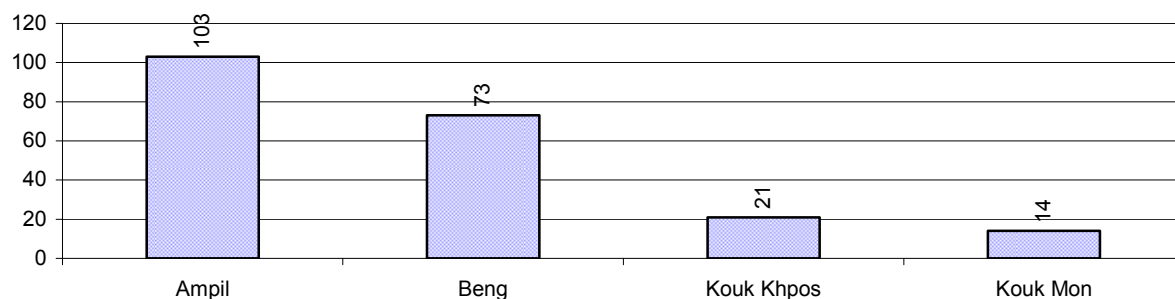
Description	2006	2007	2008
Murders, robberies and kidnapping cases	2 case(s)	3 case(s)	2 case(s)
Theft cases	55 case(s)	57 case(s)	66 case(s)
land dispute cases	139 case(s)	103 case(s)	211 case(s)
Other disputes cases	159 case(s)	165 case(s)	179 case(s)

Note: this reflects only registered criminal cases

5.4 Registered criminal Cases per 10,000 people, by Commune, for 2008



5.5 Number of registered Land Disputes, by Commune, in 2008

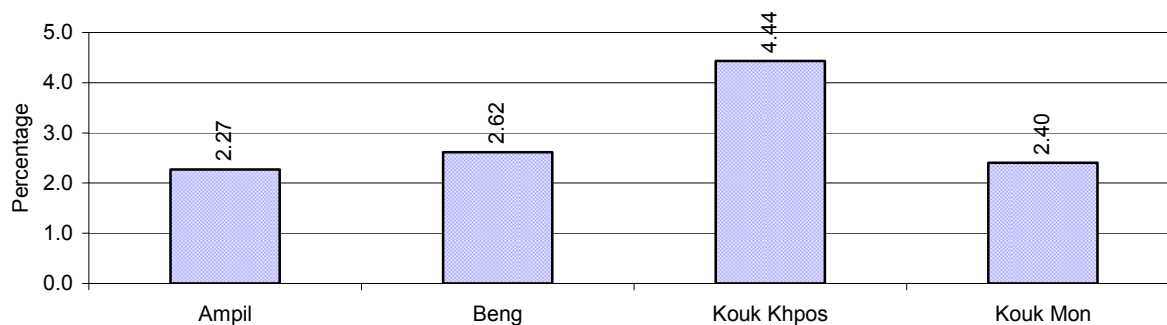


6 Gender

6.1 Registered Domestic Violence over 3 years

Description		2006	2007	2008
Families experiencing domestic violence		336 families	275 families	234 families(s)
% families experiencing domestic violence		4 %	3 %	3 %
Domestic violence cases reported by village chiefs		213 case(s)	96 case(s)	200 case(s)
Type	Physical violence	72 case(s)	27 case(s)	109 case(s)
	Sexual violence	11 case(s)	1 case(s)	0 case(s)
	Mental violence	65 case(s)	25 case(s)	30 case(s)
	Household economic violence	65 case(s)	43 case(s)	61 case(s)
Number of administrative decisions on domestic violence		0 case(s)	86 case(s)	138 case(s)
% of administrative decisions on domestic violence		0 %	90 %	69 %

6.2 Percentage of registered cases of Families experiencing domestic Violence, by Commune, in 2008



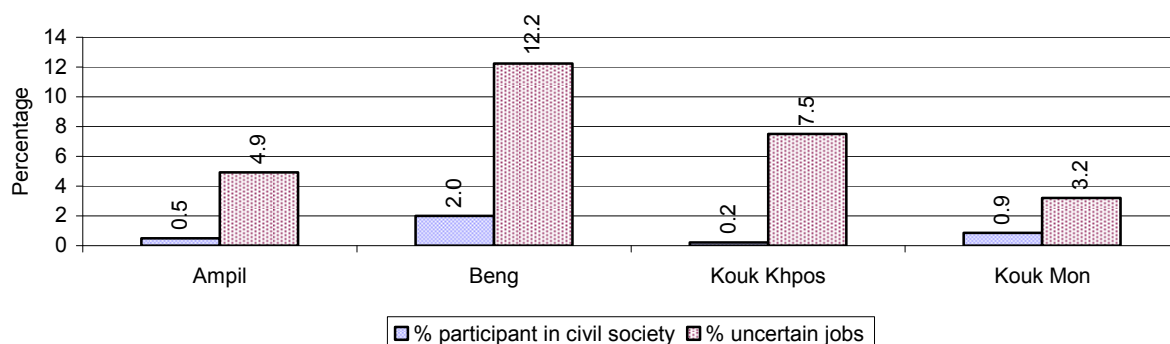
Note: Calculated as a percentage of the total number of families in each commune

6.3 Women's involvement over 3 years

Description	2006 %	2007 %	2008	
			%	Number
People participating in civil society	3%	3%	3%	1,024 person(s)
Women participating in civil society	1%	1%	1%	408 person(s)
People, 18-60 yrs, with uncertain/irregular jobs	13%	7%	13%	2,623 person(s)
Women, 18-60 yrs, with uncertain/irregular jobs	6%	3%	7%	1,467 person(s)

Note: Participation can be in NGOs, CBOs, credit groups, women's unions, parties and other civil society organizations. The first section is calculated as a percentage of the total population. The second section is calculated as a percentage of the total 18-60 year old population.

6.4 Percentage of Female Participants in Civil Society and of 18-60 year women with uncertain Jobs, by Commune, in 2008



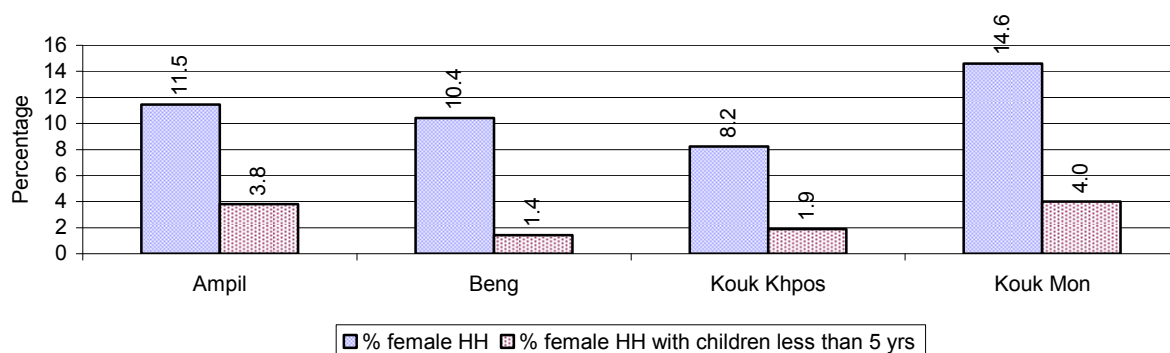
Note: Percentage of female participants in civil society is calculated as a percentage of the total population per commune. The percentage of 18-60 years old women with uncertain jobs is calculated as a percentage of the total 18-60 year old population per commune.

6.5 Female-headed Households over 3 years

Families with:	2006	2007	2008	
	%	%	%	Number
Households in which a woman is the family head	18%	12%	12%	1,027 families
Households in which a woman is the family head with children of less than 5 yrs	4%	3%	3%	259 families

Note: Calculated as a percentage of the total number of families

6.6 Percentage female-headed Households and with Children of less than 5 years old, by Commune, in 2008



Note: Calculated as a percentage of the total number of families in each commune
HH: Headed Household

7 Indigenous People in the District

7.1 Ethnic Minorities in the District over 3 years

Race of indigenous	2006		2007		2008	
	# families	# population	# families	# population	# families	# population
Phnong	0 families	0 person(s)	0 families	0 person(s)	0 families	0 person(s)
Kouy	0 families	0 person(s)	0 families	0 person(s)	0 families	0 person(s)
Stieng	0 families	0 person(s)	0 families	0 person(s)	0 families	0 person(s)
Mil	0 families	0 person(s)	0 families	0 person(s)	0 families	0 person(s)
Kroal	0 families	0 person(s)	0 families	0 person(s)	0 families	0 person(s)
Thmorn	0 families	0 person(s)	0 families	0 person(s)	0 families	0 person(s)
Khaonh	0 families	0 person(s)	0 families	0 person(s)	0 families	0 person(s)
Tompouonn	0 families	0 person(s)	0 families	0 person(s)	0 families	0 person(s)
Charay	0 families	0 person(s)	0 families	0 person(s)	0 families	0 person(s)
Kroeung	0 families	0 person(s)	0 families	0 person(s)	0 families	0 person(s)
Kavet	0 families	0 person(s)	0 families	0 person(s)	0 families	0 person(s)
Saouch	0 families	0 person(s)	0 families	0 person(s)	0 families	0 person(s)
Lun	0 families	0 person(s)	0 families	0 person(s)	0 families	0 person(s)
Kachak	0 families	0 person(s)	0 families	0 person(s)	0 families	0 person(s)
Praov	0 families	0 person(s)	0 families	0 person(s)	0 families	0 person(s)
Others	0 families	0 person(s)	0 families	0 person(s)	0 families	0 person(s)
Total	0 families	0 person(s)	0 families	0 person(s)	0 families	0 person(s)

Note: "Others" refer to other ethnic groups which are not listed.

7.2 Other Minorities in the District over 3 years

Minority	2006		2007		2008	
	# families	# population	# families	# population	# families	# population
Khmer Islamic	0 families	0 person(s)	0 families	0 person(s)	3 families	13 person(s)
Vietnamese	0 families	0 person(s)	0 families	0 person(s)	1 families	5 person(s)
Laos	1 families	2 person(s)	0 families	0 person(s)	2 families	2 person(s)

Note: Number of indigenous and minority population are additional data, so some village may not recorded.

SECTION C: PLANS AND PROJECTS

8 Priorities and Plans

8.1 Priorities of Commune Councils for 2009 in the District by Sector

The District Priority Activity Matrix (DPAM) data are taken from the CDPD. The DPAM is used for the District Integration Workshop (DIW), to show what kind of projects the commune has proposed in their Commune Investment Plan (CIP) for 2009. Donors, departments and other agencies then consider which projects they want to support and which projects they are not interested in. This results in Temporary Agreements between the Commune Council and the Supporter (NGO, Department, private donor, etc), as shown in table 8.2

No.	Project Name	Ampil	Beng	Kouk Khpos	Kouk Mon	Req.Project
		220201	220202	220203	220204	Total
Economic						
1	Compost fertilizer training	4 training	19 training			2
2	Chemical and pesticide application training		19 training		2 training	3
3	Vegetable growing training		19 training			1
4	Soil improvement techniques training	27 training	19 training			2
5	Upland cropping training	27 training				1
6	Hybrid technique training	27 training				1
7	Natural rice cultivation practice		19 training			1
8	Rice cultivation technique training	3 training				1
9	Animal vaccination request	27 time	19 time			2
10	Village veterinary training		19 training			1
11	Animal raising training	27 training	19 training	2 training	6 training	4
12	Rat eradication day				2 training	1
13	Rice seed request	16 T			4 T	2
14	Fruit trees seedling request			860 Tree		1
15	Calf for raising request	143 Head			346 Head	2
16	Sow for raising request	149 Head			230 Head	2
17	Vegetable seeds request				200 Kg	1
18	Pesticide sprayer request				59 Container	1
19	Family fish pond construction			107 Pond	22 Pond	2
20	Fish raising training	27 training	19 training			2
21	Fish fingerling request				87000 Head	1
22	Earth road construction	24060 m	77000 m	9120 m	26792 m	4
23	Laterite/natural gravel road construction	23015 m	10012 m	9863 m	14712 m	4
24	Culvert construction	80 place	106 place	23 place	42 place	4
25	Earth road repairing				9030 m	1

District Data Book 2009: Development Plans and Projects

No.	Project Name	Ampil	Beng	Kouk Khpos	Kouk Mon	Req.Project
		220201	220202	220203	220204	Total
26	Laterite/natural gravel road repairing	6900 m	9000 m			2
27	Bridger repairing	3 place				1
28	Water pump			10 set		1
29	Canal construction	2000 m		11200 m		2
30	Dam construction		1395 m	458 m		2
31	Spillway construction	1 place				1
32	Water gate plug construction			9 place		1
33	Canal repairing		4000 m			1
34	Dam repairing	3659 m	920 m		1970 m	3
35	Irrigation pond repairing			6 Pond	6 Pond	2
36	Rice seed bank			8 T		1
37	Chemical fertilizer credit request	37 T	30 T			2
38	Rice bank establish				8 building	1
39	Crop seed credit			279000 Tree		2
40	Cow bank			100 Head		1
Social						
1	Family planning	27 training			18 training	2
2	Antenatal care	27 training	4 training			2
3	Reproductive health awareness education	27 training	4 training			2
4	Antenatal care service accessibility improvement				18 training	1
5	HIV/AIDS awareness education		4 training	2 training		2
6	HIV/AIDS days celebration	1 time				1
7	Health/hygiene education for local people	27 time				1
8	Women and children health care education	3 training	4 training			2
9	Children immunization provision				2 training	2
10	Women immunization		12 time			1
11	VHV strengthening				1 training	1
12	TBA training	2 training			2 training	2
13	Mosquito larvae removal treatment		14400 package			1
14	Health center construction/renovation				1 building	1
15	Health post construction/renovation	1 building				1
16	Maternal health care education				18 training	1
17	Breastfeeding awareness education	5 training	1 training	2 training		3
18	Pond water construction/rehabilitation				2 place	1
19	Well construction at school	1 place				1

District Data Book 2009: Development Plans and Projects

No.	Project Name	Ampil	Beng	Kouk Khpos	Kouk Mon	Req.Project
		220201	220202	220203	220204	Total
20	Latrine construction	494 toilet		405 toilet	2098 toilet	3
21	Village health post construction			1 building		1
22	Water filter equipment supply	2 place	4 place	1 place		3
23	Family wate jars provision		2581 tank			1
24	Pump wells construction	47 well		28 well	5 well	3
25	Ring wells construction			2 well		1
26	Ponds construction	5 place		1 place	2 place	3
27	Pump wells repairing	14 place			1 place	2
28	Ring wells repairing	22 place				1
29	Ponds repairing	10 place	12 place	3 place	3 place	4
30	Literacy class	11 class	5 class	6 class		3
31	Literacy class materials support		5 place			1
32	Junior high school construction	5 room				1
33	School renovation	8 room				1
34	School building	4 building	5 building	4 building	7 building	4
35	Kindergarten school construction/repair	6 class	8 class	9 class	4 class	4
36	Motivating pupil's parents for school enrollment				18 Time	1
37	Teacher/volunteer teacher need			8 person		1
38	Education for all dissemination				18 time	1
39	Scholarship provision to poor pupils				2 time	1
40	Dormitory construction for teacher/pupils	1 building			2 building	2
41	Emergency relief for the poor		50 T			1
42	Food for work needs	21050 m				1
43	Construction and equipments provision for Buddhism temple	3 room				1
44	Gifts building construction		3 building			2
NREM						
1	Environmental awareness and law education		19 time			1
2	Forestry law education		19 time			1
3	Education on importance of the forests			1 training		1
4	Wildlife protection law education			1 training		1
5	Community forestry activities support			2 village		1
6	Temple/cultural ancient protection strengthening			2 training		1
Administration and Security						
1	Civil registration encouragement				18 time	1
2	Conflict resolution training		2 training	2 training		2

District Data Book 2009: Development Plans and Projects

No.	Project Name	Ampil	Beng	Kouk Khpos	Kouk Mon	Req.Project
		220201	220202	220203	220204	Total
3	Village level capacity building			1 training		1
4	Human rights and law training		2 training			1
5	Commune office construction/renovation			1 building	1 building	2
6	Village office construction/renovation			10 building		1
7	Land law dissemination		5 time	10 time	18 time	3
8	Provision of land titles/certificates		2552 family			1
9	Land registration dissemination/enforcement			10 time		1
10	Drug and related law education				18 time	1
11	Local security strengthening				11 set	1
12	Demining project		25 ha	71 ha	286 ha	3
Gender						
1	Gender mainstreaming among local people		2 training			1
2	Woman and children's rights dissemination				18 time	1
3	Women international day organizing		1 time			1
4	Children's international day celebration		1 time			1
5	Women vocational training		2 training	2 training	2 training	3
6	Food cooking/processing skill training			2 training		1
7	Law against domestic violence dissemination		2 training	10 training	18 training	3
8	Law against trafficking dissemination			10 time	18 time	2

Source: CDPD – District Priority Matrix

8.2 Temporary Agreements by Commune, for 2009²

At the District Integration Workshop (DIW) the Supporters (donors, agencies, private donors, NGOs, etc.) identify which projects/activities they would like to support or they put forward their own projects to be implemented in a particular commune. Once there is agreement between Commune Councils and Supporters on specific projects a **Temporary Agreement** is signed by the commune and the Supporter to show their mutual commitment to the identified projects/activities.

It is important to keep in mind that such Temporary Agreements do not necessarily result in implementation.

8.2.1 Temporary Agreements for 2009 as per DIW 2008 for Commune: Ampil

Commune GIS	Commune	Temporary Agreements				Supporter	Funding Source	Listed in CIP before DIW
		Project Name	Quantity	Unit	Est.Cost (K.Riels)			
Economic								
220201	Ampil	Compost fertilizer training	1	training	2140	Department of Rural Development		✓
220201	Ampil	Calf for raising request	100	Head	6000	Ockenden International		✓
Social								
220201	Ampil	Rain water storage construction	1	place	800	Department of Rural Development		□
220201	Ampil	Teachers refresher training	1	time	0	Department of Education Youth and Sports		□
220201	Ampil	Morning meals provision program	1	time	0	Department of Education Youth and Sports		□
220201	Ampil	Budget support to school	1	time	0	Department of Education Youth and Sports		□
220201	Ampil	Literacy class operation	10	village	0	Department of Education Youth and Sports		□
220201	Ampil	School support committee initiative	1	training	560	Department of Rural Development		□
220201	Ampil	School support committee district level training	1	training	2652	Department of Rural Development		□
220201	Ampil	Scholarship provision to poor pupils	1	time	0	Department of Education Youth and Sports		□
220201	Ampil	Village sanitation campaign	1	trainin	5280	Department of Rural		□

² Not all the data from the CDPD has been translated to English, this has resulted in some cells in the TA tables being blank.

District Data Book 2009: Development Plans and Projects

Commune GIS	Commune	Temporary Agreements				Supporter	Funding Source	Listed in CIP before DIW
		Project Name	Quantity	Unit	Est.Cost (K.Riels)			
				g		Development		
220201	Ampil	Water quality control	4	well	60	Department of Rural Development		<input type="checkbox"/>
220201	Ampil	Pump wells repairing technique training	4	well	80	Department of Rural Development		<input type="checkbox"/>
220201	Ampil	Literacy class	0	class	0	Department of Education Youth and Sports		✓
220201	Ampil	Self-help group formation	200	Team	40000	Ockenden International		<input type="checkbox"/>
220201	Ampil	Pump wells repair	4	well	1600	Department of Rural Development		✓
Administration and Security								
220201	Ampil	Commune meeting for mine field data gathering	1	Time	96	Cambodian Mine Action Center		<input type="checkbox"/>
220201	Ampil	Demining in 2009 plan	12	Month	50000	Halo Trust		<input type="checkbox"/>
220201	Ampil	Land law dissemination	1	training	400	Department of Land Management, Urban Planning & Construction		<input type="checkbox"/>
220201	Ampil	Provincial workshop to approve demining plan	1	Time	320	Cambodian Mine Action Center		<input type="checkbox"/>
220201	Ampil	Demining land acquisition follow up and supervision	1	Time	612	Cambodian Mine Action Center		<input type="checkbox"/>
220201	Ampil	Mine field survey mission and visit demining land beneficiaries	1	Time	612	Cambodian Mine Action Center		<input type="checkbox"/>
Gender								
220201	Ampil	Strengthening activities against women and children trafficking	1	training	180	Department of Tourism		<input type="checkbox"/>
220201	Ampil	Female village leader, WCFPs and female councilors forum support	2	training	865	Department of Women		<input type="checkbox"/>
220201	Ampil	Annual provincial level workshop on WCFPs activities reflection	1	training	254	Department of Women		<input type="checkbox"/>
220201	Ampil	Semester meeting between kindergarten project committee and beneficiaries	2	time	139	Department of Women		<input type="checkbox"/>
220201	Ampil	District level training on community kindergarten operation	1	time	307	Department of Women		<input type="checkbox"/>

Commune GIS	Commune	Temporary Agreements				Supporter	Funding Source	Listed in CIP before DIW
		Project Name	Quantity	Unit	Est.Cost (K.Riels)			
220201	Ampil	Dissemination of elimination of all forms of discrimination against women	1	time	254	Department of Women		<input type="checkbox"/>
220201	Ampil	CWCC meeting on gender mainstreaming in sector plans	2	time	254	Department of Women		<input type="checkbox"/>
220201	Ampil	District and commune woman focal point capacity strengthening	1	time	99	Department of Women		<input type="checkbox"/>
220201	Ampil	Domestic violence law and victim protection forum organizing	1	time	180	Department of Women		<input type="checkbox"/>
220201	Ampil	Pictorial maternity education training to CCWC	1	time	800	Department of Women		<input type="checkbox"/>

8.2.2 Temporary Agreements for 2009 as per DIW 2008 for Commune: Beng

Commune GIS	Commune	Temporary Agreements				Supporter	Funding Source	Listed in CIP befor DIW
		Project Name	Quantity	Unit	Est.Cost (K.Riels)			
Economic								
220202	Beng	Vegetable growing training	1	training	1652	Department of Agriculture Forestry and Fisheries		✓
220202	Beng	Natural rice cultivation practice	1	training	868	Department of Agriculture Forestry and Fisheries		✓
220202	Beng	Compost fertilizer training	1	training	2148	Department of Agriculture Forestry and Fisheries		✓
220202	Beng	Cow bank	10	Head	60000	Ockenden International		□
Social								
220202	Beng	Rain water storage construction	8	place	0	Department of Rural Development		□
220202	Beng	Sanitation promotion worker training	2	training	1916	Department of Rural Development		□
220202	Beng	Monthly meeting with Children Council on sanitation	6	time	12508	Department of Rural Development		□
220202	Beng	School support committee initiative	1	training	580	Department of Rural Development		□

District Data Book 2009: Development Plans and Projects

Commune GIS	Commune	Temporary Agreements				Supporter	Funding Source	Listed in CIP befor DIW
		Project Name	Quantity	Unit	Est.Cost (K.Riels)			
220202	Beng	Children garden	1	schools	0	Department of Education Youth and Sports		<input type="checkbox"/>
220202	Beng	Community plan implementation monitoring	6	Time	6800	Department of Rural Development		<input type="checkbox"/>
220202	Beng	CLS committee training	1	training	1000	Department of Rural Development		<input type="checkbox"/>
220202	Beng	CLR commune quarterly meeting to select target villages	1	training	440	Department of Rural Development		<input type="checkbox"/>
220202	Beng	Health education reviewing	1	training	1600	Department of Rural Development		<input type="checkbox"/>
220202	Beng	Latrine construction for school	8	place	0	Department of Rural Development		<input type="checkbox"/>
220202	Beng	School support committee district level training	1	training	2660	Department of Rural Development		<input type="checkbox"/>
220202	Beng	Water quality control	6	well	120	Department of Rural Development		<input type="checkbox"/>
220202	Beng	Pump wells repairing technique training	6	well	240	Department of Rural Development		<input type="checkbox"/>
220202	Beng	Pump wells repair	6	well	240	Department of Rural Development		<input type="checkbox"/>
220202	Beng	Health and sanitation improvement program	12	Time	1460	Department of Health		<input type="checkbox"/>
220202	Beng	Community health care insurance program	12	Time	18000	Department of Health		<input type="checkbox"/>
220202	Beng	Emergency relief for the poor	0	T	0	Department of Education Youth and Sports		✓
220202	Beng	District level training on community kindergarten operation	1	time	307	Department of Women		<input type="checkbox"/>
220202	Beng	Barbed wire supply for fencing	1	schools	0	Department of Education Youth and Sports		<input type="checkbox"/>
220202	Beng	Scholarship for poor pupils	1	schools	0	Department of Education Youth and Sports		<input type="checkbox"/>
220202	Beng	Monitoring community participatory sanitation promotion	1	training	800	Department of Rural Development		<input type="checkbox"/>
220202	Beng	Morning meals provision program	1	schools	0	Department of Education Youth and Sports		<input type="checkbox"/>

District Data Book 2009: Development Plans and Projects

Commune GIS	Commune	Temporary Agreements				Supporter	Funding Source	Listed in CIP before DIW
		Project Name	Quantity	Unit	Est. Cost (K. Riels)			
220202	Beng	Community campaign plan implementation	1	training	2800	Department of Rural Development		<input type="checkbox"/>
220202	Beng	Teachers refresher training	1	schools	0	Department of Education Youth and Sports		<input type="checkbox"/>
220202	Beng	PPEY budget support to school	1	schools	0	Department of Education Youth and Sports		<input type="checkbox"/>
220202	Beng	Provincial level workshop between Education and Rural Development departments	1	training	944	Department of Rural Development		<input type="checkbox"/>
220202	Beng	Support comminute training on promotion	1	training	1060	Department of Rural Development		<input type="checkbox"/>
220202	Beng	School support committee initiative, 2nd time	1	training	1072	Department of Rural Development		<input type="checkbox"/>
220202	Beng	Self-help group formation	7	Team	14000	Ockenden International		<input type="checkbox"/>
220202	Beng	PCC behavior change provincial level training	1	training	40	Department of Rural Development		<input type="checkbox"/>
220202	Beng	Study tour inside province	1	training	60	Department of Rural Development		<input type="checkbox"/>
220202	Beng	PRS provincial level training	1	training	80	Department of Rural Development		<input type="checkbox"/>
Administration and Security								
220202	Beng	Labor law dissemination	1	training	400	Department of Labor and Vocational Training		<input type="checkbox"/>
220202	Beng	Land law dissemination	1	time	800	Department of Land Management, Urban Planning & Construction		✓
220202	Beng	Commune meeting for mine field data gathering	1	Time	90	Land Used Planning Unit		<input type="checkbox"/>
220202	Beng	Demining project	3	ha	0	Halo Trust		✓
220202	Beng	Provincial workshop to approve demining plan	1	Time	1080	Land Used Planning Unit		<input type="checkbox"/>
220202	Beng	District workshop for data gathering	1	Time	320	Land Used Planning Unit		<input type="checkbox"/>
220202	Beng	Demining land acquisition follow up and supervision	1	Time	640	Land Used Planning Unit		<input type="checkbox"/>
220202	Beng	Mine field survey mission	1	Time	640	Land Used Planning Unit		<input type="checkbox"/>
Gender								

Commune GIS	Commune	Temporary Agreements				Supporter	Funding Source	Listed in CIP before DIW
		Project Name	Quantity	Unit	Est.Cost (K.Riels)			
220202	Beng	Women vocational training	1	training	720	Ockenden International		✓
220202	Beng	Gender mainstreaming among local people	0	training	0	Department of Women		✓
220202	Beng	Human rights program	12	Time	1460	Department of Health		□
220202	Beng	Annual provincial level workshop on WCFPs activities reflection	1	training	256	Department of Women		□
220202	Beng	Pictorial maternity education training to CCWC	1	time	176	Department of Women		□
220202	Beng	CWCC meeting on gender mainstreaming in sector plans	2	time	254	Department of Women		□
220202	Beng	District and commune woman focal point capacity strengthening	1	time	99	Department of Women		□
220202	Beng	Domestic violence law and victim protection forum organizing	1	time	254	Department of Women		□
220202	Beng	Dissemination of elimination of all forms of discrimination against women	1	time	254	Department of Women		□
220202	Beng	Anti-trafficking of women dissemination	1	training	240	Department of Tourism		□
220202	Beng	Female village leader, WCFPs and female councilors forum support	2	training	565	Department of Women		□

8.2.3 Temporary Agreements for 2009 as per DIW 2008 for Commune: Kouk Khpos

Commune GIS	Commune	Temporary Agreements				Supporter	Funding Source	Listed in CIP before DIW
		Project Name	Quantity	Unit	Est.Cost (K.Riels)			
Economic								
220203	Kouk Khpos	Cow bank	10	Head	60000	Ockenden International		✓
Social								
220203	Kouk Khpos	District level training on community kindergarten operation	4	training	2208	Department of Rural Development		☐
220203	Kouk Khpos	Support comminute training on promotion	1	training	1520	Department of Rural Development		☐
220203	Kouk	Health education reviewing	1	trainin	100	Department of Rural		☐

District Data Book 2009: Development Plans and Projects

Commune GIS	Commune	Temporary Agreements				Supporter	Funding Source	Listed in CIP before DIW
		Project Name	Quantity	Unit	Est.Cost (K.Riels)			
	Khpos			g		Development		
220203	Kouk Khpos	Sanitation promotion worker training	2	training	800	Department of Rural Development		<input type="checkbox"/>
220203	Kouk Khpos	Monthly meeting with Children Council on sanitation	6	training	2120	Department of Rural Development		<input type="checkbox"/>
220203	Kouk Khpos	School support committee initiative	1	training	580	Department of Rural Development		<input type="checkbox"/>
220203	Kouk Khpos	School support committee district level training	1	training	2652	Department of Rural Development		<input type="checkbox"/>
220203	Kouk Khpos	Village sanitation campaign	1	training	5280	Department of Rural Development		<input type="checkbox"/>
220203	Kouk Khpos	Village experiences sharing	2	Time	4160	Department of Rural Development		<input type="checkbox"/>
220203	Kouk Khpos	School support committee initiative, 2nd time	1	training	2120	Department of Rural Development		<input type="checkbox"/>
220203	Kouk Khpos	Community plan implementation monitoring	6	Time	9612	Department of Rural Development		<input type="checkbox"/>
220203	Kouk Khpos	Community campaign plan implementation	1	training	1400	Department of Rural Development		<input type="checkbox"/>
220203	Kouk Khpos	Monitoring community participatory sanitation promotion	1	training	1304	Department of Rural Development		<input type="checkbox"/>
220203	Kouk Khpos	CLS committee training	1	training	1840	Department of Rural Development		<input type="checkbox"/>
220203	Kouk Khpos	CLR commune quarterly meeting to select target villages	1	training	800	Department of Rural Development		<input type="checkbox"/>
220203	Kouk Khpos	Water quality control	5	well	2000	Department of Rural Development		<input type="checkbox"/>
220203	Kouk Khpos	Pump wells repairing technique training	5	well	2000	Department of Rural Development		<input type="checkbox"/>
220203	Kouk Khpos	Pump wells repair	5	well	2000	Department of Rural Development		<input type="checkbox"/>
220203	Kouk Khpos	Health and sanitation improvement program	12	Time	1460	Department of Health		<input type="checkbox"/>
220203	Kouk	CLR commune quarterly meeting	4	Time	10288	Department of Rural		<input type="checkbox"/>

District Data Book 2009: Development Plans and Projects

Commune GIS	Commune	Temporary Agreements				Supporter	Funding Source	Listed in CIP before DIW
		Project Name	Quantity	Unit	Est.Cost (K.Riels)			
	Khpos					Development		
220203	Kouk Khpos	Morning meals provision program	1	schools	0	Department of Education Youth and Sports		<input type="checkbox"/>
220203	Kouk Khpos	Study tour inside province	1	training	200	Department of Rural Development		<input type="checkbox"/>
220203	Kouk Khpos	PRS provincial level training	1	training	880	Department of Rural Development		<input type="checkbox"/>
220203	Kouk Khpos	PCC behavior change provincial level training	1	training	42	Department of Rural Development		<input type="checkbox"/>
220203	Kouk Khpos	Provincial level workshop between Education and Rural Development departments	1	training	944	Department of Rural Development		<input type="checkbox"/>
220203	Kouk Khpos	Villager initiatives	1	training	600	Department of Rural Development		<input type="checkbox"/>
220203	Kouk Khpos	Sanitation training at district level	1	training	3828	Department of Rural Development		<input type="checkbox"/>
220203	Kouk Khpos	Scholarship for poor pupils	1	schools	0	Department of Education Youth and Sports		<input type="checkbox"/>
Administration and Security								
220203	Kouk Khpos	Demining project	0	ha	0	Land Used Planning Unit		✓
220203	Kouk Khpos	Demining project	0	ha	0	Cambodian Mine Action Center		✓
220203	Kouk Khpos	Demining in 2009 plan	12	Time	0	Halo Trust		<input type="checkbox"/>
220203	Kouk Khpos	Mine/UXO community education to reduce accident	1	training	0	Cambodian Mine Action Center		<input type="checkbox"/>
220203	Kouk Khpos	Demining land acquisition follow up and supervision	1	Time	612	Cambodian Mine Action Center		<input type="checkbox"/>
220203	Kouk Khpos	Mine field survey mission and visit demining land beneficiaries	1	Time	612	Cambodian Mine Action Center		<input type="checkbox"/>
220203	Kouk Khpos	Provincial workshop to approve demining plan	1	Time	1060	Cambodian Mine Action Center		<input type="checkbox"/>
220203	Kouk Khpos	District workshop for mine field data gathering and prioritizing	1	Time	320	Cambodian Mine Action Center		<input type="checkbox"/>

District Data Book 2009: Development Plans and Projects

Commune GIS	Commune	Temporary Agreements				Supporter	Funding Source	Listed in CIP before DIW
		Project Name	Quantity	Unit	Est.Cost (K.Riels)			
220203	Kouk Khpos	Commune meeting for mine field data gathering	1	Time	96	Cambodian Mine Action Center		<input type="checkbox"/>
220203	Kouk Khpos	Land law dissemination	1	time	8000	Department of Land Management, Urban Planning & Construction		✓
220203	Kouk Khpos	Labor law dissemination	1	training	400	Department of Tourism		<input type="checkbox"/>
Gender								
220203	Kouk Khpos	District and commune woman focal point capacity strengthening	1	time	99	Department of Women		<input type="checkbox"/>
220203	Kouk Khpos	District level training on community kindergarten operation	1	time	307	Department of Women		<input type="checkbox"/>
220203	Kouk Khpos	Law against trafficking dissemination	1	time	240	Department of Tourism		✓
220203	Kouk Khpos	Semester meeting between kindergarten project committee and beneficiaries	2	time	139	Department of Women		<input type="checkbox"/>
220203	Kouk Khpos	Law against domestic violence dissemination	0	training	0	Department of Women		✓
220203	Kouk Khpos	Pictorial maternity education training to CCWC	1	time	176	Department of Women		<input type="checkbox"/>
220203	Kouk Khpos	Female village leader, WCFPs and female councilors forum support	2	training	865	Department of Women		<input type="checkbox"/>
220203	Kouk Khpos	Domestic violence law and victim protection forum organizing	1	time	254	Department of Women		<input type="checkbox"/>
220203	Kouk Khpos	CWCC meeting on gender mainstreaming in sector plans	2	training	254	Department of Women		<input type="checkbox"/>
220203	Kouk Khpos	Annual provincial level workshop on WCFPs activities reflection	1	training	254	Department of Women		<input type="checkbox"/>
220203	Kouk Khpos	Human rights program	12	Time	1460	Department of Health		<input type="checkbox"/>

8.2.4 Temporary Agreements for 2009 as per DIW 2008 for Commune: Kouk Mon

Commune GIS	Commune	Temporary Agreements				Supporter	Funding Source	Listed in CIP befor DIW
		Project Name	Quantity	Unit	Est.Cost (K.Riels)			
Economic								
220204	Kouk Mon	Calf for raising request	30	Head	126000	Ockenden International		✓
220204	Kouk Mon	Vegetable seeds request	10	Kg	2000	Ockenden International		✓
220204	Kouk Mon	Power tillage repairing	1	person	120	Ockenden International		□
220204	Kouk Mon	Village veterinary training	2	person	1200	Ockenden International		□
220204	Kouk Mon	VT repairing	2	person	1440	Ockenden International		□
Social								
220204	Kouk Mon	CLS committee training	1	training	0	Department of Rural Development		□
220204	Kouk Mon	School support committee initiative, 2nd time	1	training	0	Department of Rural Development		□
220204	Kouk Mon	Community campaign plan implementation	1	training	0	Department of Rural Development		□
220204	Kouk Mon	Sanitation promotion worker training	2	training	0	Department of Rural Development		□
220204	Kouk Mon	Monthly meeting with Children Council on sanitation	6	training	0	Department of Rural Development		□
220204	Kouk Mon	School support committee initiative	1	training	0	Department of Rural Development		□
220204	Kouk Mon	School support committee district level training	1	training	0	Department of Rural Development		□
220204	Kouk Mon	Village experiences sharing	2	Time	0	Department of Rural Development		□
220204	Kouk Mon	CLR commune quarterly meeting	4	Time	0	Department of Rural Development		□
220204	Kouk Mon	PRS provincial level training	1	training	0	Department of Rural Development		□
220204	Kouk Mon	Monitoring community participatory sanitation promotion	1	training	0	Department of Rural Development		□
220204	Kouk Mon	Support comminute training on promotion	1	training	0	Department of Rural Development		□

District Data Book 2009: Development Plans and Projects

Commune GIS	Commune	Temporary Agreements				Supporter	Funding Source	Listed in CIP befor DIW
		Project Name	Quantity	Unit	Est.Cost (K.Riels)			
220204	Kouk Mon	CLR commune quarterly meeting to select target villages	1	training	0	Department of Rural Development		<input type="checkbox"/>
220204	Kouk Mon	Rain water storage construction	1	place	8000	Department of Rural Development		<input type="checkbox"/>
220204	Kouk Mon	Water quality control	18	village	0	Department of Rural Development		<input type="checkbox"/>
220204	Kouk Mon	Pump wells repairing technique training	1	training	40	Department of Rural Development		<input type="checkbox"/>
220204	Kouk Mon	Pump wells repair	1	well	420	Department of Rural Development		<input type="checkbox"/>
220204	Kouk Mon	Community health care insurance program	12	Time	6160	Department of Health		<input type="checkbox"/>
220204	Kouk Mon	Health and sanitation improvement program	12	Time	6160	Department of Health		<input type="checkbox"/>
220204	Kouk Mon	Scholarship provision to poor pupils	0	time	0	Department of Education Youth and Sports		✓
220204	Kouk Mon	Pump wells repair	0	place	0	Department of Rural Development		✓
220204	Kouk Mon	Community plan implementation monitoring	6	Time	0	Department of Rural Development		<input type="checkbox"/>
220204	Kouk Mon	PPEY budget support to school	8	schools	0	Department of Education Youth and Sports		<input type="checkbox"/>
220204	Kouk Mon	Provincial level workshop between Education and Rural Development departments	1	training	0	Department of Rural Development		<input type="checkbox"/>
220204	Kouk Mon	Study tour inside province	1	training	0	Department of Rural Development		<input type="checkbox"/>
220204	Kouk Mon	Semester meeting at district level to strengthen community kindergarten	2	time	200	Department of Women		<input type="checkbox"/>
220204	Kouk Mon	Health education reviewing	1	training	0	Department of Rural Development		<input type="checkbox"/>
220204	Kouk Mon	PCC behavior change provincial level training	1	training	0	Department of Rural Development		<input type="checkbox"/>
220204	Kouk Mon	Child friendly program strengthening	8	schools	0	Department of Education Youth		<input type="checkbox"/>

District Data Book 2009: Development Plans and Projects

Commune GIS	Commune	Temporary Agreements				Supporter	Funding Source	Listed in CIP before DIW
		Project Name	Quantity	Unit	Est.Cost (K.Riels)			
						and Sports		
220204	Kouk Mon	Teachers refresher training	1	schools	0	Department of Education Youth and Sports		<input type="checkbox"/>
220204	Kouk Mon	Scholarship for poor pupils	1	schools	0	Department of Education Youth and Sports		<input type="checkbox"/>
220204	Kouk Mon	Morning meals provision program	1	schools	0	Department of Education Youth and Sports		<input type="checkbox"/>
Administration and Security								
220204	Kouk Mon	Demining project	0	ha	0	Halo Trust		✓
220204	Kouk Mon	Demining project	0	ha	0	Cambodian Mine Action Center		✓
220204	Kouk Mon	Mine/UXO risks reduction education	3	village	0	Cambodian Mine Action Center		<input type="checkbox"/>
220204	Kouk Mon	Demining in 2009 plan	12	Time	0	Cambodian Mine Action Center		<input type="checkbox"/>
220204	Kouk Mon	Mine field survey mission	1	Time	640	Land Used Planning Unit		<input type="checkbox"/>
220204	Kouk Mon	Demining land acquisition follow up and supervision	1	Time	640	Land Used Planning Unit		<input type="checkbox"/>
220204	Kouk Mon	District workshop for data gathering	1	Time	320	Land Used Planning Unit		<input type="checkbox"/>
220204	Kouk Mon	Provincial workshop to approve demining plan	1	Time	1080	Land Used Planning Unit		<input type="checkbox"/>
220204	Kouk Mon	Commune meeting for mine field data gathering	1	Time	90	Land Used Planning Unit		<input type="checkbox"/>
220204	Kouk Mon	Land law dissemination	1	time	800	Department of Land Management, Urban Planning & Construction		✓
220204	Kouk Mon	Labor law dissemination	1	training	400	Department of Labor and Vocational Training		<input type="checkbox"/>
220204	Kouk Mon	Demining in 2009 plan	12	Time	0	Halo Trust		<input type="checkbox"/>
Gender								
220204	Kouk Mon	Human rights program	12	Time	1460	Department of Health		<input type="checkbox"/>
220204	Kouk Mon	Dissemination of elimination of all forms of discrimination against women	1	time	254	Department of Women		<input type="checkbox"/>
220204	Kouk Mon	Sewing skill training	1	person	120	Ockenden International		<input type="checkbox"/>
220204	Kouk Mon	Law against trafficking dissemination	1	time	240	Department of Tourism		✓
220204	Kouk Mon	Domestic violence law and victim protection forum organizing	1	time	254	Department of Women		<input type="checkbox"/>

District Data Book 2009: Development Plans and Projects

Commune GIS	Commune	Temporary Agreements				Supporter	Funding Source	Listed in CIP before DIW
		Project Name	Quantity	Unit	Est.Cost (K.Riels)			
220204	Kouk Mon	District and commune woman focal point capacity strengthening	1	time	99	Department of Women		<input type="checkbox"/>
220204	Kouk Mon	Women vocational training	0	training	0	Ockenden International		✓
220204	Kouk Mon	CWCC meeting on gender mainstreaming in sector plans	1	time	254	Department of Women		<input type="checkbox"/>
220204	Kouk Mon	District level training on community kindergarten operation	1	time	307	Department of Women		<input type="checkbox"/>
220204	Kouk Mon	Pictorial maternity education training to CCWC	1	time	176	Department of Women		<input type="checkbox"/>
220204	Kouk Mon	Annual provincial level workshop on WCFPs activities reflection	1	training	256	Department of Women		<input type="checkbox"/>
220204	Kouk Mon	Female village leader, WCFPs and female councilors forum support	2	training	565	Department of Women		<input type="checkbox"/>
220204	Kouk Mon	Law against domestic violence dissemination	0	training	0	Department of Women		✓

Source: CDPD, District Level Detail TA resulting from DIW

8.3 Outputs, estimated and actual costs of C/S Fund Projects between 2005 and 2008, by Commune

Commune	Project Type	Budget Year	Output		Quantity	Unit	Unit Cost MR	
			Description	Type			Estimate	Actual
Ampil	Rural Transport	2005	Single pipe culvert	New	6	Place	14.47	38.72
Ampil	Rural Transport	2005	Double pipe culvert	New	1	Place	5.69	38.72
Ampil	Rural Transport	2005	Wood bridge, 5 tonne standard, concrete abutments	New	1	Place	21.86	38.72
Ampil	Rural Transport	2006	Single pipe culvert	New	12	Place	27.18	38.87
Ampil	Rural Transport	2006	Double pipe culvert	New	2	Place	11.74	38.87
Ampil	Rural Transport	2007	Earth road	New	2	Km	46.70	46.68
Ampil	Rural Transport	2008	Laterite road	Repair	2.376	Km	85.52	42.29
Beng	Rural Transport	2005	Wood bridge, 5 tonne standard, wood abutments	New	2	Place	24.40	33.94
Beng	Rural Transport	2005	Single pipe culvert	New	3	Place	9.31	33.94
Beng	Rural Transport	2005	Double pipe culvert	New	1	Place	4.14	33.94
Beng	Rural Transport	2006	Laterite road	New	2.28	Km	38.97	38.97
Beng	Rural Transport	2007	Laterite road	Repair	0.682	Km	19.55	36.16
Beng	Rural Transport	2007	Double cell box culvert	New	1	Place	16.72	36.16
Beng	Rural Transport	2008	Laterite road	Repair	1.71	Km	60.38	41.34
Beng	Rural Transport	2008	Single pipe culvert	New	6	Place	27.43	41.34
Kouk Khpos	Rural Transport	2005	Laterite road	New	3.4	Km	21.93	25.71
Kouk Khpos	Rural Transport	2005	Single pipe culvert	New	1	Place	1.67	25.71
Kouk Khpos	Rural Transport	2005	Double pipe culvert	New	1	Place	4.06	25.71
Kouk Khpos	Rural Transport	2006	Double pipe culvert	New	2	Place	9.85	28.21
Kouk Khpos	Rural Transport	2006	Earth road	New	1.35	Km	18.38	28.21
Kouk Khpos	Rural Transport	2007	Laterite road	Repair	2.58	Km	50.72	25.26
Kouk Khpos	Rural Transport	2008	Laterite road	Repair	0.765	Km	27.56	27.54
Kouk Mon	Rural Transport	2005	Single pipe culvert	New	1	Place	1.75	28.90
Kouk Mon	Rural Transport	2005	Double pipe culvert	New	1	Place	6.34	28.90
Kouk Mon	Rural Transport	2005	Wood bridge, 5 tonne standard, concrete abutments	New	1	Place	21.70	28.90
Kouk Mon	Rural Transport	2006	Laterite road	New	2.013	Km	18.45	29.41
Kouk Mon	Rural Transport	2006	Double cell box culvert	New	1	Place	10.96	29.41
Kouk Mon	Rural Domestic Water Supplies	2006	Pond with no filter	New	1	Place	10.95	10.95
Kouk Mon	Rural Transport	2007	Laterite road	Repair	1.5	Km	37.67	37.66
Kouk Mon	Rural Transport	2008	Laterite road	Repair	0.882	Km	34.43	34.40

Source: PID

8.4 Total Expenditure on C/S Fund Projects by sector and commune between 2005 and 2008

Sector	Total Cost in Million Riels			
	Ampil	Beng	Kouk Khpos	Kouk Mon
Rural Domestic Water Supplies				10.95
Rural Transport	166.56	150.41	79.18	130.37

*Source: PID***8.5 Actual 2009 C/S Fund projects by Commune**

Commune	Project Type	Project Output		Quantity	Unit	Fund Source (Riels)		
		Description	Type			Total	C/S	Local Contribution
Ampil	Rural Transport	Single pipe culvert 1.0m diameter	New	3	Place	51,820,630	51,620,630	200,000
Ampil	Rural Transport	Single pipe culvert 0.6m diameter	New	3	Place	51,820,630	51,620,630	200,000
Ampil	Rural Transport	Double cell box culvert 3.0m x2.0m	New	1	Place	51,820,630	51,620,630	200,000
Ampil	Rural Transport	Double pipe culvert 1.0m diameter	New	1	Place	51,820,630	51,620,630	200,000
Ampil	Rural Transport	Double pipe culvert 1.0m diameter	New	1	Place	51,820,630	51,620,630	200,000
Ampil	Rural Transport	Single pipe culvert 0.6m diameter	New	1	Place	51,820,630	51,620,630	200,000
Beng	Rural Transport	Single pipe culvert 0.6m diameter	New	2	Place	41,961,136	41,761,136	200,000
Beng	Rural Transport	Single pipe culvert 0.8m diameter	New	1	Place	41,961,136	41,761,136	200,000
Beng	Rural Transport	Wood bridge, 5 tonne, concrete abutments	Repair	1	Place	41,961,136	41,761,136	200,000
Kouk Khpos	Rural Transport	Laterite road	New	0.58	km	26,902,430	26,827,430	75,000
Kouk Khpos	Rural Transport	Laterite road	New	0.71	km	27,781,477	27,706,477	75,000
Kouk Mon	Rural Transport	Earth road	New	1.135	km	45,524,343	45,248,343	276,000

Source: PID

9 District level Projects from 2006 to 2009

District Initiative Projects (DIPs) are funded by Danida, DFID and PSDD (UNDP, DFID and SIDA).

Funding for 2006-2008

Between 2006 and 2008 there were 14 provinces funded by PSDD and 10 by Danida and DFID. The list of provinces and who funded these is below

Danida and DFID funded DIPs:

Kampong Cham	Kampong Speu	Koh Kong	Kratie	Monduliri
Pursat	Ratanakiri	Siem Reap	Sihanoukville	Kep

PSDD funded DIPs:

Banteay Meanchey	Battambang	Kampong Chhnang	Kandal	Phnom Penh
Prey Veng	Svay Rieng	Takeo	Kampong Thom	Preah Vihear
Stung Treng	Kampot	Oddar Meanchey	Pailin	

Funding for 2009

In 2009 there was a change to the number of provinces funded by the two streams. Danida and DFID were still funding the same 10 provinces they had been funding the previous three years, but two more provinces were added *Kampong Thom and Kampot*. Now PSDD funds 12 provinces and Danida and DFID fund 12.

9.1 District Initiative Infrastructure Projects from 2006 to 2009

9.1.1 District Initiative Infrastructure Projects for 2006 to 2008

No District Initiative Infrastructure Projects were implemented in this district for 2006-2008

9.1.2 District Initiative Infrastructure Projects in 2009

No District Initiative Infrastructure Projects have been implemented in this district for 2009

9.2 District Initiative Service Projects from 2006 to 2009

9.2.1 District Initiative Service Projects for 2006 to 2008

No District Initiative Service Projects were implemented in this district for 2006-2008

9.2.2 District Initiative Service Projects in 2009

No District Initiative Service Projects have been implemented in this district for 2009

9.3 Inter Commune Council Projects in 2008 and 2009

9.3.1 ICC Projects in 2008

No ICC projects in this district at this time

9.3.2 ICC Projects in 2009

No ICC projects in this district at this time

Source: ICC project, Ministry of Interior (DoLA), -UNDP project for Local Governance – DDLG

9.4 Other Projects in 2008 and 2009

9.4.1 RPRP

There are no RPRP projects being implemented in this district or province at this time. The RPRP is only being implemented in Svay Rieng and Prey Veng

9.4.1.1 RPRP Projects from 2006 to 2008

No RPRP projects in this district at this time

9.4.1.2 RPRP Projects in 2009

No RPRP projects in this district at this time

9.4.2 Seth Korma

9.4.2.1 Seth Koma 2007

Description of Outputs/Activities	Budget (1 US\$ = 4000 Riels)
1.1 Monthly CCWC meeting	\$1,008
1.2 Quarterly CCWC meeting	\$658
1.3 Operation support cost	\$3,600
1.4 Village meeting on Child Rights and child protection	\$693
1.5 Village meeting on Immunization, health issues	\$693
1.6 village meeting on Education	\$693
1.7 Incentive CPS teachers for 10 months	\$10,050
1.8 Monitoring the functioning of CPS classes	\$536
1.9 Awareness raising on women and child rights	\$4,800
GRAND TOTAL	\$22,731

Source: UNICEF

9.4.2.2 Seth Koma 2008

Description of Outputs/Activities	Budget (1 US\$ = 4000 Riels)
Community able to identify and articulate critical development needs for children.	
CCWC monthly meetings (24 Communes)	\$1,008
CCWC quarterly meetings (24 Communes)	\$462
Operational support (24 Communes)	\$3,600
Village meeting on child rights and child protection (24 Communes)	\$693
Village meeting on health issues (24 Communes)	\$693
Village meeting on education (24 Communes)	\$693
Incentive for CPS teachers (22 Communes)	\$10,050
Monitoring the functioning of CPS classes (22 Communes)	\$536
Campaign on woman and child right (24 Communes)	\$4,800
Sub-total for all outputs	\$22,535
Contingency cost	\$196
GRAND TOTAL	\$22,731

Source: UNICEF

9.4.2.3 Seth Koma 2009

Description			Anlong Veang	Banteay Ampil	Chong Kal	Trapeang Prasat	Samraong	Total
# Comm.			5	4	4	6	5	24
# Village			47	74	25	38	47	231
Activity and budget	Ope. costs CCWC	Comm.	5	4	4	6	5	24
		Budget	\$1,000	\$800	\$800	\$1,200	\$1,000	\$4,800
	CPS	Village	27	10	25	28	13	103
		Budget	\$3,645	\$1,314	\$3,375	\$3,780	\$1,755	\$13,869
	Parenting Education	Village	47	10	25	38	17	137
		Budget	\$2,961	\$630	\$1,806	\$2,934	\$1,071	\$9,402
	CLTS	Village	0	27	0	0	13	40
		Budget	\$0	\$7,365	\$0	\$0	\$3,079	\$10,444
	PHAST	Village	0	15	4	0	0	19
		Budget	\$0	\$3,095	\$731	\$0	\$0	\$3,826
	Special health intervention	Support MMR	5	4	4	6	5	24
		Budget	\$1,000	\$800	\$800	\$1,200	\$1,000	\$4,800
	Outreach	Comm	1	1	0	1	0	3
		Budget	\$504	\$1,512	\$0	\$756	\$0	\$2,772
	Discretionary Fund	Comm.	1	1	0	1	0	3
		Budget	\$500	\$500	\$0	\$500	\$0	\$1,500
Village Mapping			\$66	\$162	\$0	\$81	\$0	\$309
Total			\$9,676	\$16,178	\$7,512	\$10,451	\$7,905	\$51,722

Source: UNICEF

SECTION D: SERVICES AND ORGANIZATIONS

10 Infrastructure

10.1 Length of and Expenditure on Roads in 2008, by District

Roads	OMC	Anlong Veng	Banteay Ampil	Chongkal	Samrong	Trapeang Prssath
Length of paved road in the district	108	40	0	0	30	38
Length of unpaved roads in the district	259	18	12	39	190	0
Amount spent on construction of roads in 2008	555,074	37,043	34,838	41,613	400,276	41,305
Amount spent on repair and rehabilitation of roads in 2008	1,172,373	36,089	26,172	92,693	1,017,419	0

Note 1: Please note that these data are not necessarily complete or correct. The data are derived from government agencies at provincial and district level which used different recording systems, did not always have complete data or were, sometimes, less than willing to share their data.

Note 2: Please be aware that these data are incomplete due to the fact that the amounts for the construction, repair and rehabilitation recorded reflect only funds provided by the government, not the contributions by any other parties.

10.2 Scale of and Expenditure on Irrigation in 2008, by District

Irrigation	OMC	Anlong Veng	Banteay Ampil	Chongkal	Samrong	Trapeang Prssath
Number of irrigation schemes operating in 2008	9	3	2	2	2	n/a
Total nr of hectares under irrigation in dry season 2008	450	140	100	110	100	n/a
Total funds spent in 2008 on construction of irrigation systems	626,708	278,695	198,881	73,660	75,471	n/a
Total funds spent in 2008 on rehabilitation/repair of irrigation systems	18,530	9,400	3,500	2,530	3,100	n/a
Total funds spent in 2008 on operation and maintenance	645,238	288,095	202,381	76,190	78,571	n/a

Note 1: Please note that these data are not necessarily complete or correct. The data are derived from government agencies at provincial and district level which used different recording systems, did not always have complete data or were, sometimes, less than willing to share their data.

Note 2: Please be aware that the data above are incomplete as these only reflect funds provided by the government, not the contributions by farmers or other parties.

10.3 Power Supply in 2008, by District

Electricity	OMC	Anlong Veng	Banteay Ampil	Chongkal	Samrong	Trapeang Prssath
Total number of electricity connections to households	3,503	950	n/a	305	2,043	205
Total number of electricity connections to agencies, companies, organizations	86	10	n/a	7	66	3
Total volume in KWh of electricity consumed last in 2008	9,901,263	90,455	n/a	16,115	9,785,880	8,813
Total amount collected from users for consumed electricity	2,941,229	43,074	n/a	7,674	2,886,285	4,197
Per capita electricity consumption in 2008 in Kwh	256	3	n/a	1	167	0

Note 1: Please note that these data are not necessarily complete or correct. The data are derived from government agencies at provincial and district level which used different recording systems, did not always have complete data or were, sometimes, less than willing to share their data.

Note 2: These data only record electricity provided by electricity companies and does not include homes powered by generators or batteries (for this information see Section B: General Profile, Part 1: General Information; table 1.3.1 and chart 1.3.4).

Note 3: In most provinces electricity is only provided through town-based networks

Note 4: Per capita consumption is calculated by dividing the total volume of electricity produced in 2008 by the number of people living in each district as per the 2008 census (for the provincial data it is calculated against the number of people living in the province)

11 Health Facilities

Please note that the Operational District (health) boundaries are different to the administrative district boundaries. Therefore the data provided here shows the facilities, staff, NGOs etc in each Operational District within the province NOT the administrative district.

Acronyms

Com Cov	Commune Covered	MW2	Secondary Midwives
CPA	Complementary Package of Activities	NU1	Primary Nurse
Dr	Doctor	NU2	Secondary Nurse
FDH	Former District Hospital	OD	Operational District
HC	Health Center	Others	Other Staff
HC (NB)	Health Center no building	PHD	Provincial Health Department
HP	Health Post	Pop 04-05	Population Covered 2004 or 2005
MA	Medical Assistant	RH	Referral Hospital
MPA	Minimum Package of Activities	Vil Cov	Village Covered
MW1	Primary Midwives	VIL-HC	Distance from Village to Health Center

11.1 Health Facilities in the Province, by Operational District

Otdar Mean Chey	OD	RH	HC	HP
Samraong	1	1	14	
Total	1	1	14	0

11.2 Health Facilities and Staff in the province, by Operational District

This table shows health facilities, staff and coverage of health facilities in each operational district.

No	Facility Name	Type	Class	Dr	Ma	Nu2	Nu1	Mw2	Mw1	Others	Com Cov	Vil Cov	Pop. 04-05
Samraong													
1	Ampil	FDH	MPA	0	0	5	7	0	2	2	1	23	10,203
2	Anlong Veaeng	FDH	MPA	2	1	15	20	1	1	5	4	36	19,883
3	Beng	HC	None MPA	0	0	1	10	0	0	3	1	16	8,657
4	Bos Sbov	HC	MPA	0	0	1	1	1	0	2	1	7	3,098
5	Chong Kal	FDH	MPA	0	0	4	5	0	3	3	2	14	11,068
6	Kaun Kriel	HC	MPA	0	0	1	2	0	0	3	4	23	12,379
7	Kouk Khpos	HC	MPA	0	0	1	10	0	0	3	3	19	7,599
8	Kouk Mon	HC	MPA	0	0	1	2	2	1	4	3	12	7,660
9	Ou Smach	HC	MPA	0	1	1	2	0	0	2	2	9	6,735
10	Pongro Ta Paen	HC	None MPA	0	0	4	5	0	3	3	2	10	7,141
11	Samraong	HC	MPA	0	0	1	1	0	1	3	3	20	19,310
12	Trapeang Prasat	HC	MPA	0	0	3	5	0	1	1	2	14	8,223
13	Trapeang Prei	HC	MPA	0	0	3	2	0	1	3	2	16	6,599
Total:				2	2	41	72	4	13	37	30	219	128,555

Source: MEDiCAM – Infrastructure - (http://www.medicam-cambodia.org/hsi/health_system/srch/index.asp?cboLcn=6&cmdSearch=Search&cboCHName=&cboType=)

11.3 Deliveries in 2007 in the Province, by Operational District

OD	Deliveries	Deliveries at home		Deliveries	Total deliveries	Total deliveries
	at HC	By Health Staff	ByTBAs	at RH	by Health Staff	by health staff and TBAs
Samraong	1330	310	1310	209	1849	3159
<i>Sub-total</i>	<i>1330</i>	<i>310</i>	<i>1310</i>	<i>209</i>	<i>1849</i>	<i>3159</i>

Source: MoH, Annual Statistics 2007

12 Education³

12.1 Schools, Classes, Students, Staff, for all levels, for 2007/2008 by District

District	Number of Schools	Disadv. Schools	Number of Classes	Classes in Pagoda	Enrollment		Repeaters		Teaching Staff		Non-Teaching Staff		Total Staff	
					Total	Girl	Total	Girl	Total	Female	Total	Female	Total	Female
Anlung Veng	30	1	240	0	9,036	4,165	947	419	151	35	25	5	176	40
Banteay Ampil	59	6	345	0	11,417	5,216	1,596	731	229	24	40	1	269	25
Chong Kal	31	1	174	0	6,019	2,956	706	298	124	31	26	5	150	36
Samrong	42	0	314	0	12,155	5,725	1,269	527	229	80	39	7	268	87
Trapaing Prasat	27	4	197	0	6,522	2,966	788	347	127	31	27	2	154	33
Whole Province	189	12	1,270	0	45,149	21,028	5,306	2,322	860	201	157	20	1,017	221
- Urban Area	42	0	314	0	12,155	5,725	1,269	527	229	80	39	7	268	87
- Rural Area	117	11	716	0	23,958	11,138	3,090	1,376	480	86	93	8	573	94
- Remote Area	30	1	240	0	9,036	4,165	947	419	151	35	25	5	176	40

12.2 Characteristics of Schools and School Principals for 2007/2008 by Commune

Commune	Number of Schools				2 - Shift	Floating	Schools	Attached	Schools Without		Characteristics of School Principals (Incharge)			
	Pre-Sch	Primary	College	Lycee	Schools	Schools	in Pagoda	Pre-Sch	Water Sup.	Latrine	Avg. Age	Avg. Service	U.Sec+ Ed.	Female
Ampil	0	17	1	0	13	0	0	0	10	11	44.0	18.9	1	0
Beng	1	14	0	0	14	0	1	1	10	7	43.0	18.5	0	0
Kouk Khpos	0	8	1	0	8	0	0	0	5	6	45.1	19.9	1	0
Kouk Mon	1	14	1	1	10	0	1	1	7	7	46.4	23.0	0	0

³ All the data for section 12 comes from the Ministry of Education, Youth and Sport (MoEYS)

12.3 Enrolment by Level of Education, 2006/2007 by Commune

Commune	School	Pre school		Primary School		Lower Secondary School		Upper Secondary School		Enrolment	
		Total	Female	Total	Female	Total	Female	Total	Female	Total	Female
Ampil	18	0	0	3709	1705	291	110	0	0	4000	1815
Beng	14	35	12	3221	1500	0	0	0	0	3256	1512
Kouk Khpos	9	0	0	1232	575	73	34	0	0	1305	609
Kouk Mon	15	25	14	2517	1185	1122	420	0	0	3664	1619

12.4 Enrolment by Level of Education, 2007/2008 by Commune

Commune	School	Pre school		Primary School		Lower Secondary School		Upper Secondary School		Enrolment	
		Total	Female	Total	Female	Total	Female	Total	Female	Total	Female
Ampil	18	0	0	3341	1567	337	149	0	0	3678	1716
Beng	15	35	10	2868	1321	0	0	0	0	2903	1331
Kouk Khpos	9	0	0	1199	566	111	64	0	0	1310	630
Kouk Mon	17	24	9	2364	1065	1029	427	109	38	3526	1539

12.5 Aspects of Enrolment for 2007/2008 by Commune

Commune	% Repeaters (Total)			% Over-age Enrollment (Total)			% Repeaters (Girl)			% Over-age Enrollment (Girl)		
	Primary	L.Sec.	U.Sec.	Primary	L.Sec.	U.Sec.	Primary	L.Sec.	U.Sec.	Primary	L.Sec.	U.Sec.
Ampil	17.8	1.2	0.0	31.4	73.3	0.0	16.7	0.7	0.0	30.1	73.8	0.0
Beng	17.7	0.0	0.0	31.6	0.0	0.0	20.0	0.0	0.0	29.6	0.0	0.0
Kouk Khpos	15.3	0.9	0.0	26.6	63.1	0.0	13.1	1.6	0.0	27.4	67.2	0.0
Kouk Mon	12.1	1.8	0.9	22.2	46.8	41.3	11.5	1.4	2.6	20.4	44.0	21.1

12.6 School Buildings for all schools in the District for 2007/2008, by Commune

Commune	Total Number of		Concrete/Brick Structure		Wooden Structure		Bamboo Structure		New Buildings		Buildings Without Good		
	Buildings	Rooms	Buildings	Rooms	Buildings	Rooms	Buildings	Rooms	Repaired	Constructed	Floor	Roof	Wall
Ampil	31	98	11	52	20	46	0	0	3	8	15	9	16
Beng	22	73	11	49	9	22	2	2	1	6	8	8	8
Kouk Khpos	12	38	4	17	8	21	0	0	0	3	2	3	1
Kouk Mon	31	97	8	40	21	52	2	5	1	2	20	12	13

12.7 Conditions of Classrooms and Existence of Separate School Office and Library, by Commune

Commune	Number of Class rooms	Number of Classrooms			Classrooms Without Good			Number of Furniture needed				Schools with Separate	
		in Pagoda	New Repaired	New Constr.	Floor	Roof	Wall	Desks	Chairs	Black-board	Teacher Table	Office	Library
Ampil	83	0	7	39	31	21	34	246	92	25	38	6	1
Beng	60	0	2	22	15	14	16	282	282	11	20	4	1
Kouk Khpos	28	0	0	10	0	2	5	14	14	3	5	3	0
Kouk Mon	80	0	3	11	37	22	33	204	191	14	27	5	3

12.8 Community Participation and Financing across all schools in the District for 2007/2008 by Commune

Commune	Parent Association				Comm. Teachers	Teaching Monks	PAP Fund (Riel)		Number of Schools Obtaining Funds from				
	Exists	Held Meet	Total	Female			per Student	per School	Sch. Income	Community	Gvt. For building	Abroad	IOs/NGOs
Ampil	18	17	5	1	0	0	8,934	2,148,607	0	0	0	0	0
Beng	12	12	6	1	0	0	7,099	1,631,340	0	0	0	0	0
Kouk Khpos	7	8	7	1	0	0	7,069	1,051,900	0	0	0	0	0
Kouk Mon	17	16	5	1	0	0	11,816	2,721,431	0	0	0	0	0

12.9 Percentage Student Flow Rates and Graduation by level 2006/2007, by Commune

Commune	Primary Level (Grades 1-6)			Lower Secondary Level (Grades 7-9)			Upper Secondary Level (Grades 10-12)			Successful Candidates		
	Promotion	Repetition	Dropout	Promotion	Repetition	Dropout	Promotion	Repetition	Dropout	Grade 6	Grade 9	Grade 12
Ampil	64.9	16.0	19.1	74.9	1.4	23.7	0.0	0.0	0.0	206	26	0
Beng	62.6	15.8	21.6	0.0	0.0	0.0	0.0	0.0	0.0	154	0	0
Kouk Khpos	72.6	14.9	12.6	95.9	1.4	2.7	0.0	0.0	0.0	84	0	0
Kouk Mon	75.8	10.8	13.3	67.7	1.7	30.6	0.0	0.0	0.0	249	158	0

13 Staff and Resources at the District

This chapter presents data from the District Information System, collected around the middle of 2009 unless otherwise specified.

13.1 District Councilors elected in 2009

Name	Sex	Year of Birth	Function	Phone
អន អឿយ	M	1951	Chairperson of The Council	011-259 683
វ៉ាង ម៉ុន	M	1956	Councillor	011-474 741
សេម ឡា	M	1954	Councillor	085-398 775
ឌី សឿត	F	1969	Councillor	092-560 455
ប៊ិន សំរេច	M	1959	Councillor	011-554 000
វ៉ាង សាឡៃ	M	1982	Councillor	011-740 407
ផែន ស៊ីផែម	M	1978	Councillor	011-525 908
ម៉ែន សារី	M	1964	Councillor	011-259 033
ម៉ៅ ឡាច	M	1952	Councillor	012-259 385
លន បូ	M	1953	Councillor	099-208 618
ទោន តឿន	M	1954	Councillor	011-741 173
ឃិត ខាយ	M	1969	Councillor	092-946 319
ហេង សុផានី	M	1975	Councillor	097-668 2045

13.2 Committees of the Council

Please note at the time of producing the district data books the composition of the committees was not known for all district councils and therefore data were not available for 13.2.1, 13.2.2, 13.2.3.

13.2.1 Technical Facilitation Committee

13.2.2 Women's and Children's Affairs Committee

13.2.3 Procurement Committee

13.3 Board of Governors

Name	Sex	DoB	Function	Salary Level	Body	Phone
ចាប ផាត	M	1952	District Governor	ក.៣.៤	High Ranking Civil Servant	011-663 078
ហ៊ឹង ហឿន	M	1959	District Deputy Governor	ខ.១.៥	Medium Civil Servant	011-408 423
ស្នេម គីមឡាន	F	1983	District Deputy Governor	ខ.៣.១១	Medium Civil Servant	012-233 592

13.4 Offices under Sala Krong, Sala Srok and Sala Khan

Office Name	Chief		Deputy Chief		No. of Staff				Office Area (m2)	No of vehicle (public or program)	
					State		Contract			vehicle	moto
	M	F	M	F	M	F	M	F			
District/ Khan Cabinet	0	0	1	0	0	0	0	0	12	0	0
Adminnistration Office	0	0	1	0	4	0	0	0	12	0	1
Economy Office	0	0	1	0	3	1	0	0	12	0	0
Social Affair Office	0	0	1	0	2	2	0	0	12	0	0

13.5 Municipality/District/Khan line offices

Office Name	Chief		Deputy Chief		No. of Staff				Office Area (m2)	No of vehicle (public or program)	
					State		Contract				
	M	F	M	F	M	F	M	F		vehicle	moto
District/ Khan Police Headquarter	1	0	4	0	50	0	0	0	10.5	0	7
District/ Khan Military Police Headquarter	1	0	1	0	11	0	0	0	300	1	2
Planning Office	1	0	0	0	0	0	0	0	Borrow	0	0
Women Affairs Office	0	1	0	0	0	0	0	0	16	0	0
Environment Office	1	0	0	0	0	0	0	0	Borrow	0	0
Education Office	0	0	2	0	7	1	9	2	216	0	1
Agriculture Office	1	0	0	0	1	0	0	0	16	0	1
Social Affairs Office	0	0	0	0	1	0	0	0	16	0	0
Lan Management Office	1	0	1	0	0	0	0	0	16	0	0

13.6 Properties and Equipment of District Administration

13.6.1 Buildings

Description	Unit	Number	Remark
Office building type			
- Concrete	building	1	
- Wood	building	0	
- Mixed	building	1	
Total floor space	m2		
- Concrete	m2	200	
- Wood	m2	0	
- Mixed	m2	132	
Building condition			
- Concrete	%	99	
- Wood	%	0	
- Mixed	%	60	
Office reserved land area	m2	0	
Total office land area	m2	16,545	

13.6.2 Means of Transport available at the District Administration

Description	Unit	Number	Remark
Vehicle (type, size and condition)	Vehicle	0	
Motorcycle (type, size and condition)	Motor	2	

13.6.3 Equipment in District Offices

Description	Unit	Number	Remark
Generator	per set	0	
Photocopy machine at the office	per set	0	
Private photocopy machine at the district town	place	2	
Telephone network (mobile line service)	network	4	
Telephone network (land line service)	network	0	
Fax (include Fax number)	per set	1	
Computer	per set	1	
Printer	per set	0	
Scanner	Per set	0	
Number of computers those can access Internet and email services in the municipality/ district/khan office (including the technical line offices (please provide the email address)	set	0	
Typewriters (including the technical line offices)	per set	3	
Staff of Municipality/district/khan office can use computer	person	2	

13.6.4 Equipment and facilities at the District Town

Description	Unit	Number	Remark
Availability of electricity at noon	Nr Hours	12	
Private internet and email services in the municipality/ district/khan town.	place	0	

13.7 Registered Revenue of the District Administration in 2008⁴

13.8 Services in the District

13.8.1 Public Sector Services

Type of Infrastructure/services	Unit	Number	
		Public	Private
Schools			
Pre-school	room	2	11
Primary School	room	329	0
Secondary school	room	33	0
High School	room	2	0
University	room		
Health			
Health post	place		
Health center	place	5	0
Referral Hospital	bed		

⁴ Please note that the data in this table are at best estimates. If the table appears blank it does not mean there is no revenue, just that the data have not been recorded/entered.

13.9 Civil Society Organizations active in the District

13.9.1 NGOs, Associations, Programs and Projects

Name	Abbr.	Sector Activities	No. of Target Communes	No. of Target Villages	Office in District
NA	BFD	កុមារកំព្រា-ក្រីក្រ	4	0	No
NA	KVA	ធនាគារគោ ស្រូវ ស្រែកសិករ	4	0	No
NA	FP	អភិវឌ្ឍន៍កុមារ	4	0	No
Asia Devalopment Bank	ADB	មិនមាន	4	0	No
NA	RCEDO	ទឹកស្អាត	4	0	No
NA	CHHRA	សុខភាព	4	0	No
AUST CARE	AUST CARE	ធនាគារជី ស្រូវ	4	0	No
NA	FRC	មិនមាន	4	0	No
NA	BTC	សុខភាព	4	0	No
NA	Malteser	សុខភាព	4	0	No
NA	ICS	គាំទ្រសិទ្ធិកុមារ	4	0	No
NA	CIDO	កសិកម្ម សន្តិសុខស្បៀង	4	74	No
NA	UNICEF	កម្មវិធីសិទ្ធិកុមារ	4	0	No
NA	CDA	សហគមន៍ព្រៃឈើ អាហារូបត្ថមកុមារ	4	0	No

13.9.2 Political Parties active in the Municipality, District and Khan

Name	Abbr.	Office in District
Cambodian People Party	CPP	Yes
FUNCINPEC Party	FUNCINPEC	Yes
NRP	NRP	Yes
SAM RAINSY Party	Sam Rainsy Party	Yes

13.10 Private Sector Organizations

13.10.1 Registered Companies in 2008, by District

On private sector at commune and/or district level	OMC	Anlong Veng	Banteay Ampil	Chongkal	Samrong	Trapeang Prssath
Businesses and Companies						
Number of registered agricultural enterprises (except family farms)	7	1	0	1	4	1
Number of registered shops, restaurants, transporters and other services	28	14	0	0	14	0
Number of manufacturing companies	35	10	0	0	23	2
Number of registered forestry enterprises	11	2	2	2	3	2
Number of registered mining companies	6	1	1	2	0	2
Number of financial institutions (ACELEDA, Thanakea Phum, AMK)	3	0	0	0	3	0
Number of other commercial institutions	-	n/a	n/a	n/a	n/a	n/a
Estimated number of informal enterprises (not registered)	8	3	n/a	n/a	5	n/a
Employment						
Number of people employed in 2008 by companies or any other enterprises	1,545	100	20	70	1,305	50
Investment						
Amount invested in 2008 by private sector	14,165,714	57,143	0	0	14,095,238	13,333
Markets						
Number of markets, operating at least weekly	7	2	1	1	2	1

Note: These data are not comprehensive as different companies and business are registered with different departments and not all departments were able or willing to provide detailed information. The number of informal enterprises reflects a rough estimate, made at provincial level and could not be verified.

Source: Unofficially collected at Provincial Level

13.10.2 Farmers in 2008, by District

Credit	OMC	Anlong Veng	Banteay Ampil	Chongkal	Samrong	Trapeang Prssath
Volume of credit provided to farmers in 2008	4,000	1,000	1,000	n/a	n/a	2,000
Number of farmers receiving credit in 2008	587	80	205	n/a	n/a	302
Volume of credit provided to companies in 2008	N/A	n/a	n/a	n/a	n/a	n/a

Note: Please note that these data are not necessarily complete or correct. The data are derived from government agencies at provincial and district level which used different recording systems, did not always have complete data or were, sometimes, less than willing to share their data.

Source: Unofficially collected at Provincial Level

SECTION E: POVERTY DATA

14 Data on Poverty

14.1 Predicted Poverty Rates for 2009, by commune

The **Predicted Family Poverty Rate** is based on a statistical model (robust multilevel mixed effect regression) at village level developed by the NCDD M&E Unit and uses CDB data for making an estimate of the predicted poverty rate (this is: *the portion of total families in the district or commune who are expected to be poor*) for the following year using current year data.

The basis for this predicted poverty rate also uses IDPoor (a project of the Ministry of Planning with technical assistance provided by GTZ) data

Commune	2004	2009
Ampil	45.80%	40.80%
Beng	47.10%	41%
Kouk Khpos	47.70%	40.10%
Kouk Mon	43%	37.80%

14.2 Poverty data from survey

14.2.1 Identification of Poor Households Program (IDPoor)

The Ministry of Planning IDPoor Program has developed standardized Procedures for Identification of Poor Households in rural areas. These Procedures are implemented using a participatory and consultative process by sub-national government structures and community representatives.

The IDPoor Program is managed by the Ministry of Planning (MOP), in cooperation with the Ministry of Interior's Department of Local Administration (DOLA). The program is supported by the Federal Republic of Germany, with technical assistance provided by German Technical Cooperation (GTZ). In 2009, AusAID also provided funding support to the Program.

Objective

The IDPoor Program aims to implement the Procedures for Identification of Poor Households in rural areas as widely as possible, in order to provide data on the level of poverty of areas and households that can be used by a large range of institutions and organizations for targeting services and development assistance to poor areas and poor households.

Coverage: During 2007, 2008 and 2009 the IDPoor Procedures have been implemented in 18 provinces (with partial or complete coverage), covering a total of around 7000 rural villages. The MOP and a number of NGO partners who are Health Equity Fund Operators have collaborated in collecting this data from different areas.

Categorization: Identified poor households are classified under two poverty categories: Poor Level 1 (very poor), and Poor Level 2 (poor). Households are classified based on data collected using a standard questionnaire, together with consideration by villagers of these households' special circumstances.

Further information: Please go to the IDPoor Program webpage at www.mop.gov.kh/Projects/IDPoor/tabid/154/Default.aspx

Commune	Poor 1 HHs	Poor 2 HHs	Poor 1 HHs	Poor 2 HHs	Total Poor 1&2 HHs	Total HHs in Commune
Ampil	270	536	9.6%	19.1%	28.7%	2809
Beng	369	502	14.5%	19.7%	34.1%	2552
Kouk Khpos	137	179	14.7%	19.2%	33.9%	931
Kouk Mon	286	407	13.4%	19.0%	32.4%	2142